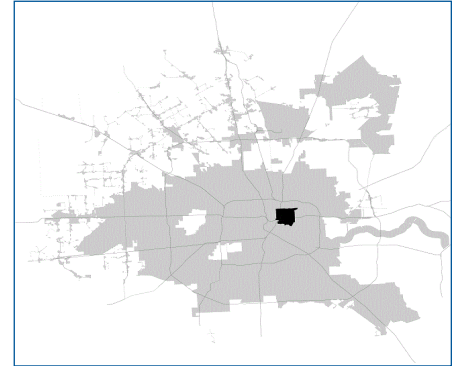


SUPER

Neighborhood

RESOURCE ASSESSMENT



	Super Neighborhood		Houston	
Pop. characteristics	2000	2015	2000	2015
Total population	22,211	19,687	1,953,631	2,217,706
Persons per sq. mile	4,451	3,947	3,166	3,314
Age of Population				
Under 5 years	9%	9%	8%	8%
5- 17 years	24%	21%	19%	17%
18- 64 years	55%	60%	64%	65%
65 and over	12%	10%	9%	10%
Ethnicity				
Non Hispanic Whites	1%	4%	31%	26%
Non Hispanic Blacks	63%	48%	25%	22%
Hispanics	35%	46%	37%	44%
Non Hispanic Asians	0%	1%	6%	7%
Non Hispanic Others	0%	1%	1%	1%
Income				
Under \$25,000	67%	56%	33%	27%
\$25,001 to \$50,000	21%	24%	31%	25%
\$50,001 to \$100,000	10%	14%	24%	26%
Over \$100,001	2%	6%	12%	22%
Median Household Income	\$14,720	\$30,535	\$36,616	\$46,187
Educational Status				
No Diploma	58%	39%	30%	23%
High School Diploma	24%	29%	20%	23%
Some College	14%	22%	23%	24%
Bachelor's or Higher	4%	9%	27%	31%
Housing and Households				
Total housing units	8,756	8,204	782,378	909,336
Occupied	87%	83%	92%	88%
Vacant	13%	17%	8%	12%
Total households	7,591	6,824	717,945	799,714
Family households	4,927	3,996	457,549	491,778
Median Housing Value	\$28,977	\$87,797	\$79,300	\$131,700

Description

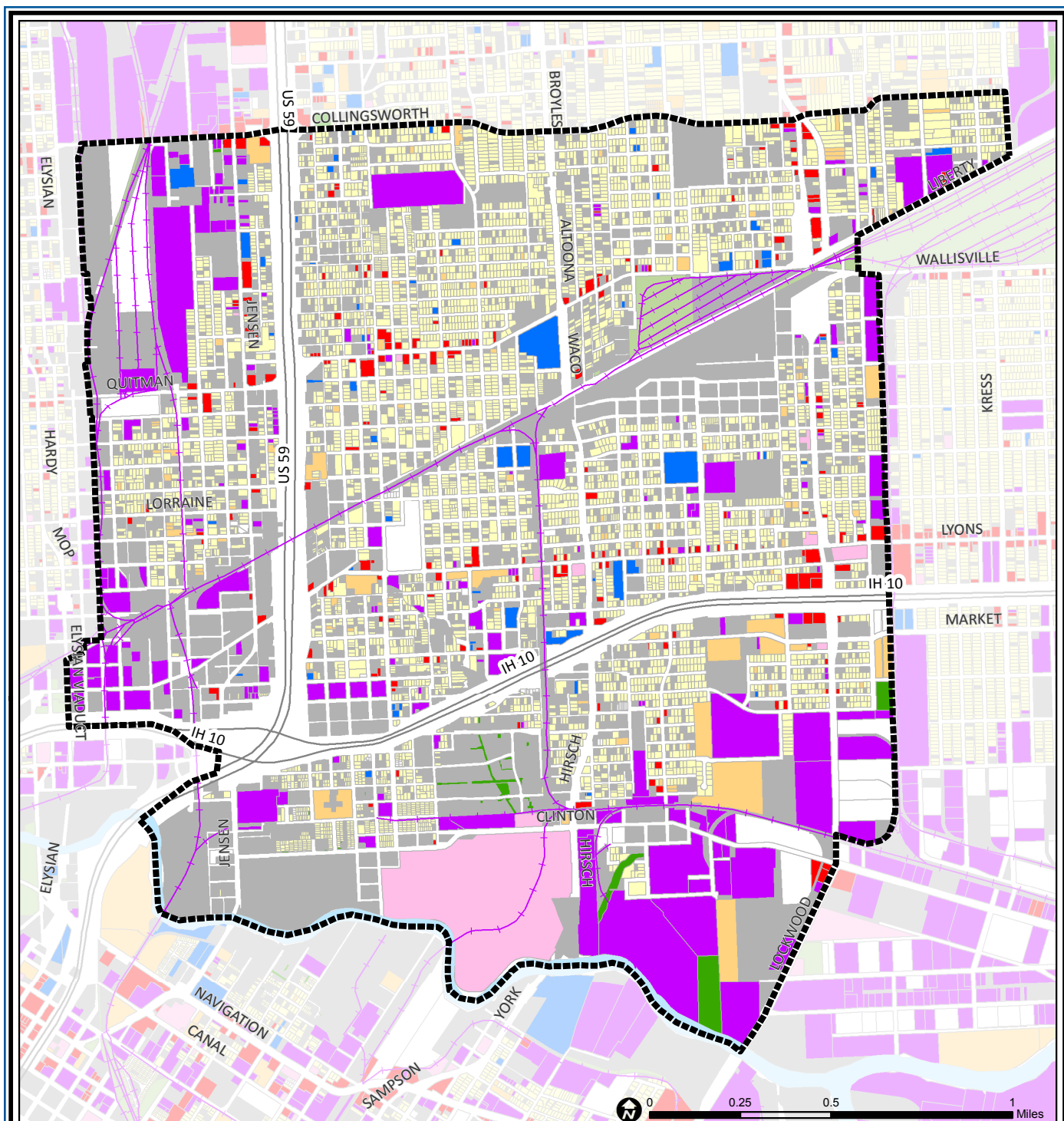
Greater Fifth Ward has its origins on the north bank of Buffalo Bayou across from the original town site for Houston. Originally a multi-racial community, Fifth Ward quickly became one of the centers of Houston's African-American community. Its commercial streets, especially Lyons and Jensen, provided retail outlets and entertainment for the residents of the small wood frame homes that predominated in the area. Small clusters of brick homes identified a small middle class population. Many original, sub-standard housing units have been demolished over the past two decades, but a recent revival of commercial activity and home construction is now filling these empty lots.

Highlights

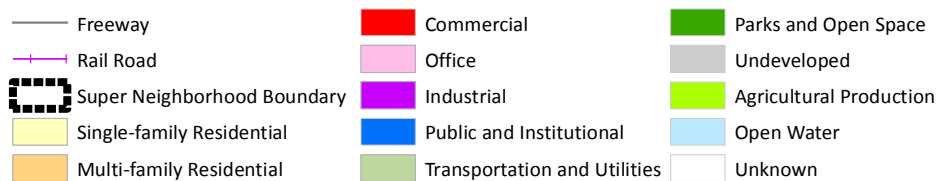
- ✓ Houston City Council Districts B & H
- ✓ Houston Independent School District
- ✓ 6 Police beats (includes bordering beats)
- ✓ 3,192 acres (4.99 sq. miles)



**PLANNING &
DEVELOPMENT
DEPARTMENT**



Greater Fifth Ward: Land Use



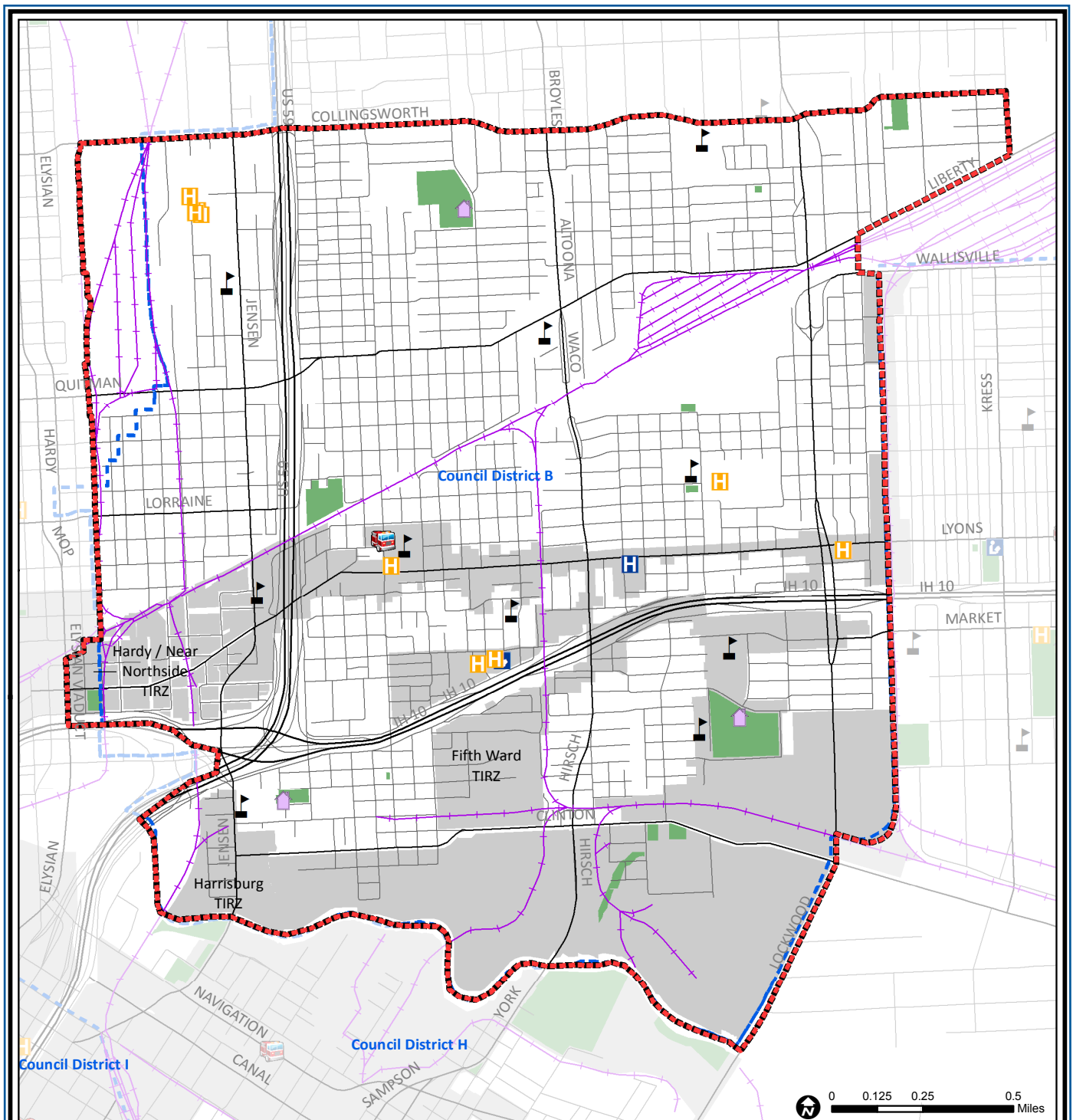
Source: City of Houston GIS Database,
Harris County Appraisal District

Date: November 15, 2017

This map is made available for reference purposes only and should not be substituted for a survey product. The City of Houston will not accept liability of any kind in conjunction with its use.



**PLANNING &
DEVELOPMENT
DEPARTMENT**



Greater Fifth Ward: Public Facilities

Super Neighborhood Boundary

Community Centers

Fire Station

Police Station

School

Airports

Harris County Hospitals

Private Hospitals

Other Health Facilities

Library

Rail Road

Metro Rail Stations

Metro Rail Line

Parks

TIRZ

Source: City of Houston GIS Database

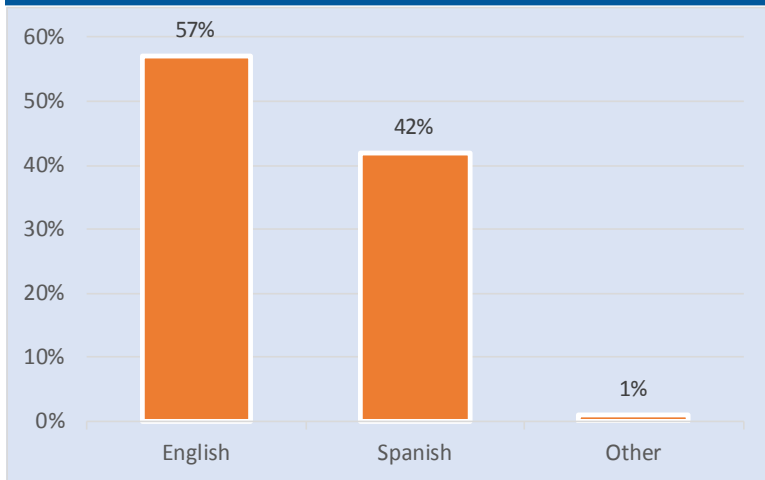
Date: October 2017

This map is made available for reference purposes only and should not be substituted for a survey product. The City of Houston will not accept liability of any kind in conjunction with its use.

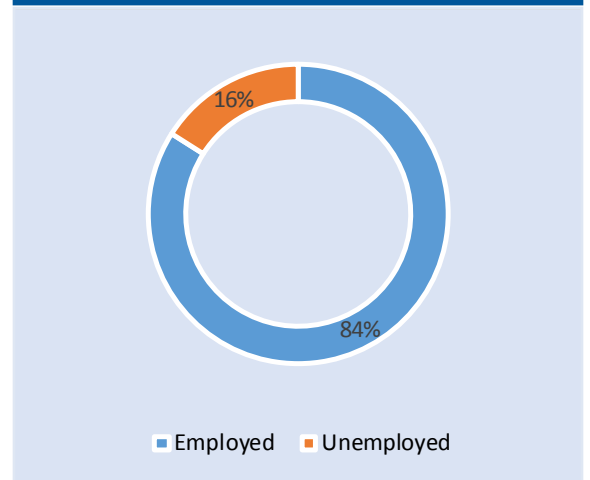


**PLANNING &
DEVELOPMENT
DEPARTMENT**

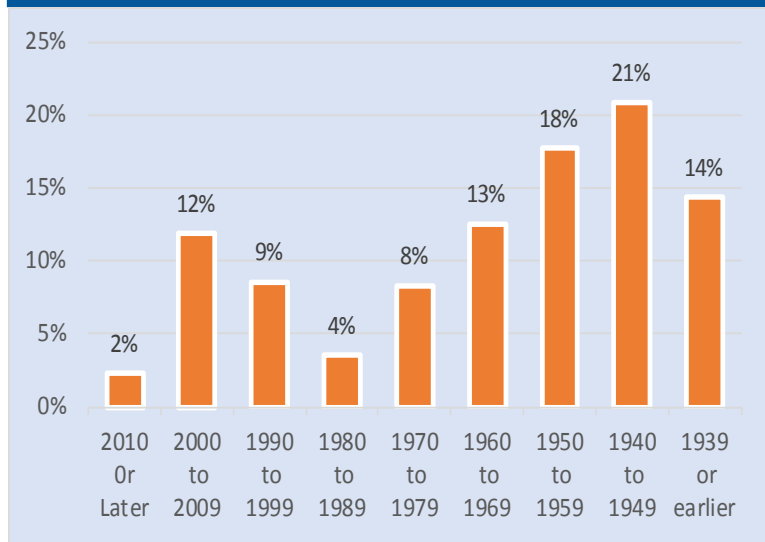
Language Spoken at Home



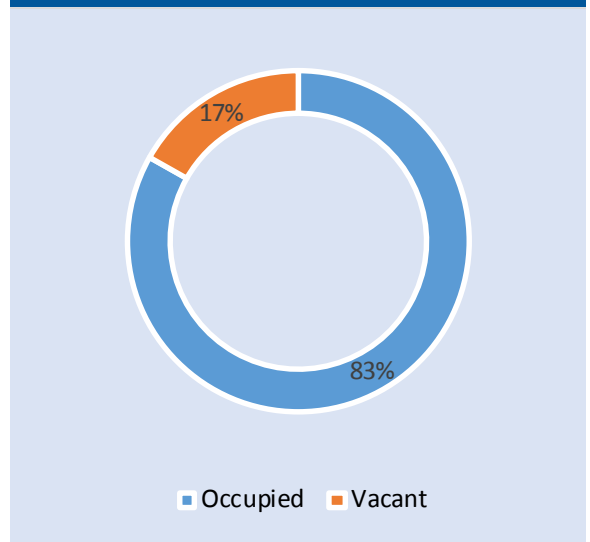
Employment Status



Housing Units by Year Built



Housing Occupancy



Source: U.S. Census Bureau, 2000
American Community Survey, 2011-2015 Estimates



**PLANNING &
DEVELOPMENT
DEPARTMENT**