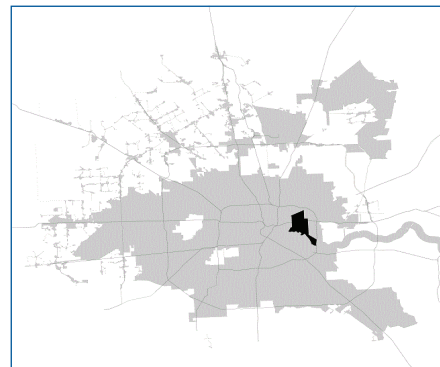


SUPER

Neighborhood

RESOURCE ASSESSMENT



	Super Neighborhood		Houston	
Pop. characteristics	2000	2015	2000	2015
Total population	19,684	17,571	1,953,631	2,217,706
Persons per sq. mile	3,080	2,749	3,166	3,314
Age of Population				
Under 5 years	9%	8%	8%	8%
5- 17 years	23%	21%	19%	17%
18- 64 years	60%	61%	64%	65%
65 and over	8%	11%	9%	10%
Ethnicity				
Non Hispanic Whites	5%	3%	31%	26%
Non Hispanic Blacks	3%	7%	25%	22%
Hispanics	91%	89%	37%	44%
Non Hispanic Asians	0%	0%	6%	7%
Non Hispanic Others	0%	0%	1%	1%
Income				
Under \$25,000	45%	41%	33%	27%
\$25,001 to \$50,000	34%	32%	31%	25%
\$50,001 to \$100,000	18%	22%	24%	26%
Over \$100,001	3%	6%	12%	22%
Median Household Income	\$29,846	\$29,273	\$36,616	\$46,187
Educational Status				
No Diploma	69%	55%	30%	23%
High School Diploma	20%	24%	20%	23%
Some College	9%	17%	23%	24%
Bachelor's or Higher	2%	6%	27%	31%
Housing and Households				
Total housing units	5,256	5,909	782,378	909,336
Occupied	93%	87%	92%	88%
Vacant	7%	13%	8%	12%
Total households	4,888	5,169	717,945	799,714
Family households	4,136	3,770	457,549	491,778
Median Housing Value	\$41,405	\$69,150	\$79,300	\$131,700

Description

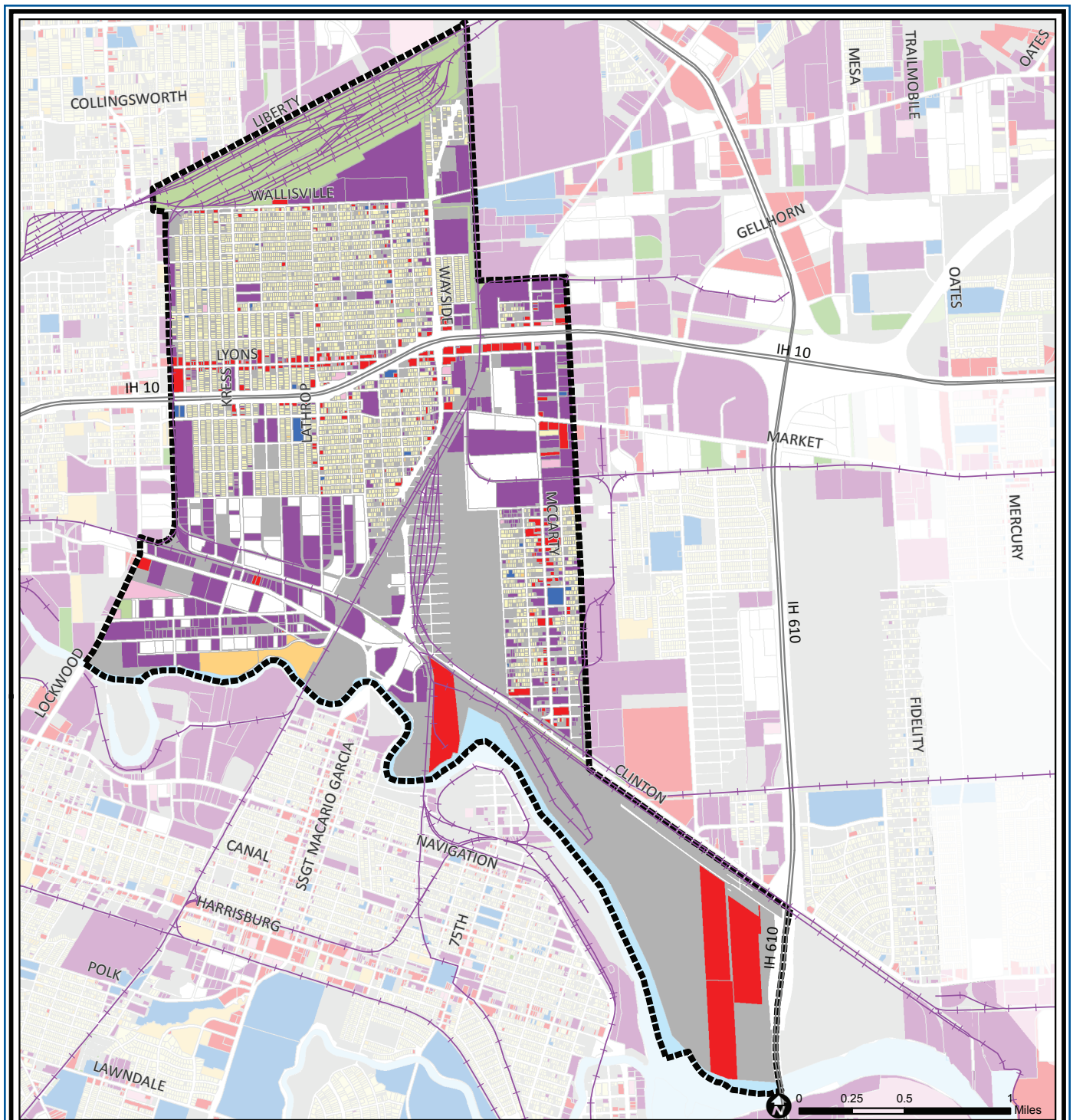
Denver Harbor/Port Houston is made up of two distinct but similar neighborhoods located north of the Houston Ship Channel turning basin. The southern portion of the area along Clinton Drive is industrial. The smaller residential area, Port Houston, is laid out on both sides of McCarty Street. It has a mix of residential, commercial and industrial uses. Denver Harbor is primarily residential. Lyons Avenue is the major commercial corridor in Denver Harbor. Although Interstate Highway 10 splits Denver Harbor physically, its identity has remained strong. Both neighborhoods, originally blue collar Anglo neighborhoods, are now predominantly Hispanic.

Highlights

- ✓ Houston City Council Districts H & B
- ✓ Houston Independent School District
- ✓ North Forest Independent School District
- ✓ 7 Police beats (includes bordering beats)
- ✓ 4,090 acres (6.39 sq. miles)



**PLANNING &
DEVELOPMENT
DEPARTMENT**



Denver Harbor / Port Houston: Land Use

	Freeway		Commercial		Parks and Open Space
	Rail Road		Office		Undeveloped
	Super Neighborhood Boundary		Industrial		Agricultural Production
	Single-family Residential		Public and Institutional		Open Water
	Multi-family Residential		Transportation and Utilities		Unknown

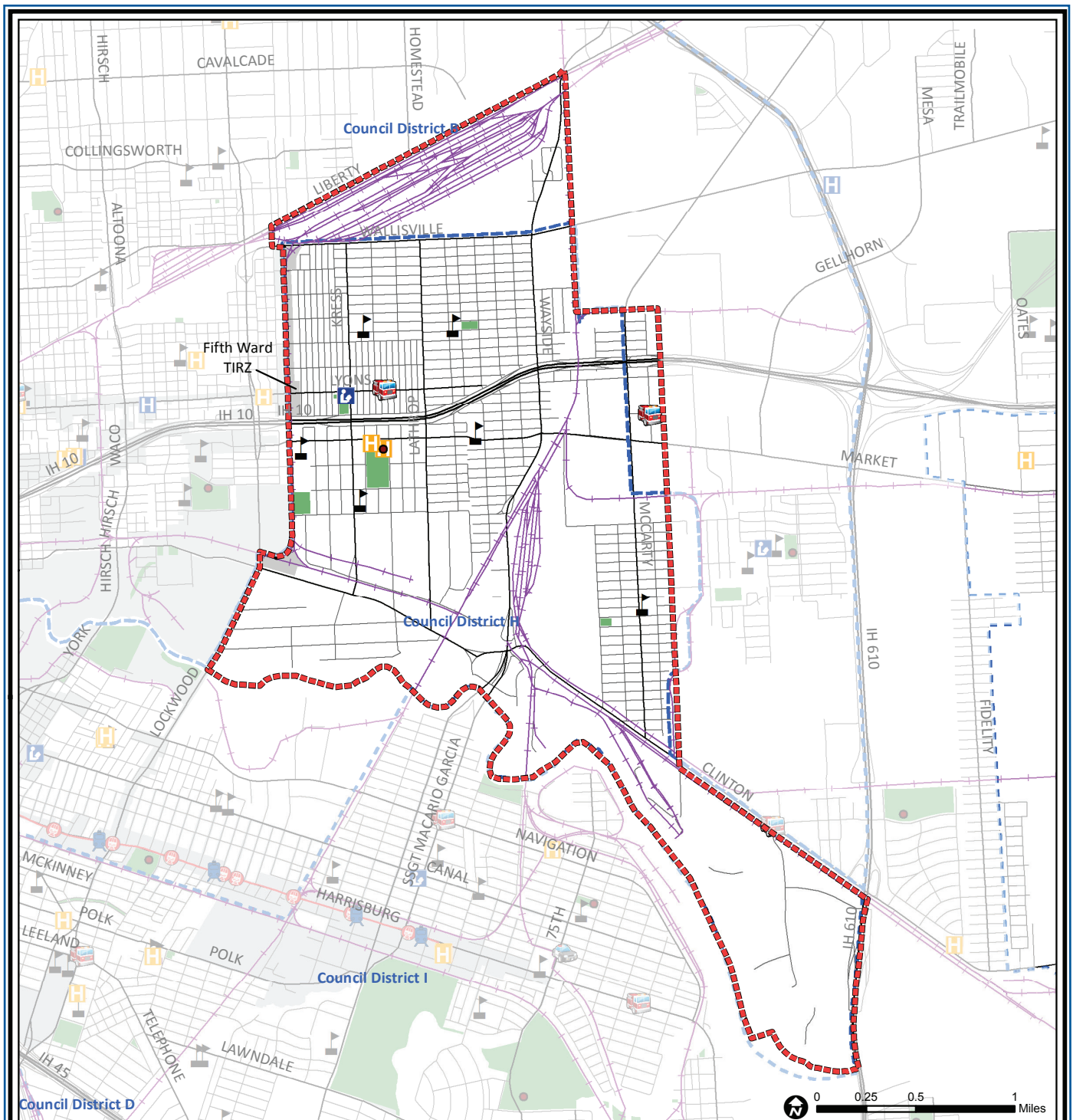
Source: City of Houston GIS Database,
Harris County Appraisal District

Date: November 15, 2017

This map is made available for reference purposes only and should not be substituted for a survey product. The City of Houston will not accept liability of any kind in conjunction with its use.



**PLANNING &
DEVELOPMENT
DEPARTMENT**



Denver Harbor / Port Houston: Public Facilities

Source: City of Houston GIS Database

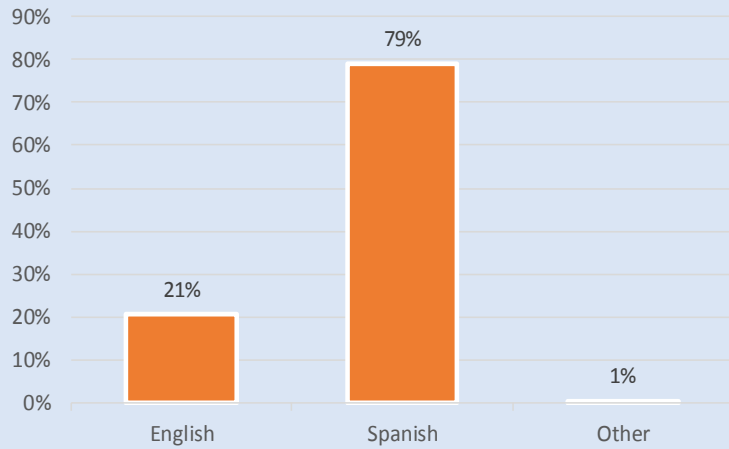
Date: October 2017

This map is made available for reference purposes only and should not be substituted for a survey product. The City of Houston will not accept liability of any kind in conjunction with its use.

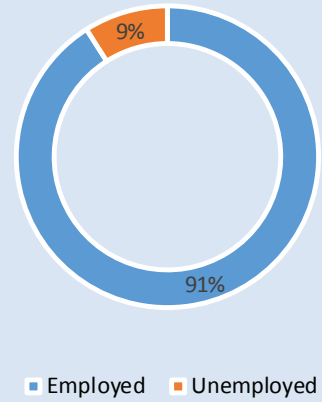


**PLANNING &
DEVELOPMENT
DEPARTMENT**

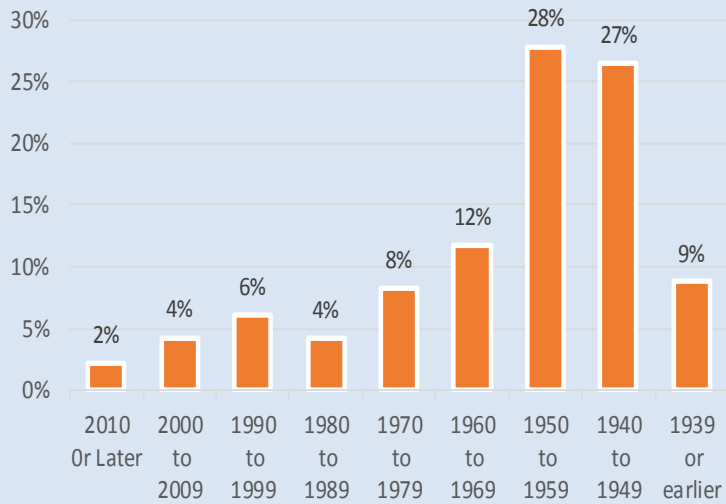
Language Spoken at Home



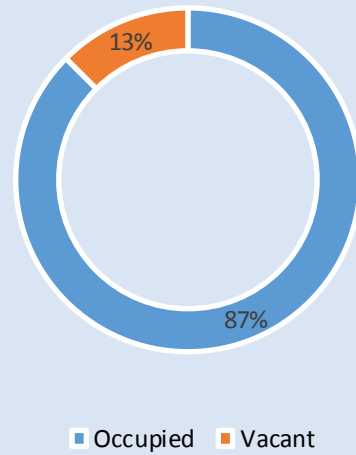
Employment Status



Housing Units by Year Built



Housing Occupancy



Source: U.S. Census Bureau, 2000
American Community Survey, 2011-2015 Estimates



**PLANNING &
DEVELOPMENT
DEPARTMENT**