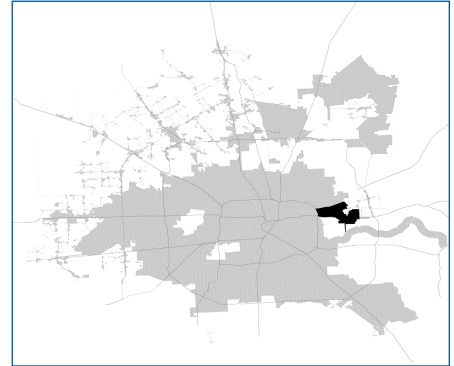


# SUPER

## Neighborhood

### RESOURCE ASSESSMENT



	Super Neighborhood		Houston	
Pop. characteristics	2000	2015	2000	2015
Total population	27,350	28,790	1,953,631	2,217,706
Persons per sq. mile	297	3,105	3,166	3,314
<b>Age of Population</b>				
Under 5 years	11%	11%	8%	8%
5- 17 years	23%	21%	19%	17%
18- 64 years	59%	61%	64%	65%
65 and over	7%	7%	9%	10%
<b>Ethnicity</b>				
Non Hispanic Whites	22%	12%	31%	26%
Non Hispanic Blacks	17%	11%	25%	22%
Hispanics	59%	76%	37%	44%
Non Hispanic Asians	1%	1%	6%	7%
Non Hispanic Others	1%	0%	1%	1%
<b>Income</b>				
Under \$25,000	35%	30%	33%	27%
\$25,001 to \$50,000	35%	30%	31%	25%
\$50,001 to \$100,000	26%	31%	24%	26%
Over \$100,001	4%	9%	12%	22%
<b>Median Household Income</b>	\$33,899	\$41,497	\$36,616	\$46,187
<b>Educational Status</b>				
No Diploma	45%	47%	30%	23%
High School Diploma	28%	28%	20%	23%
Some College	20%	20%	23%	24%
Bachelor's or Higher	8%	5%	27%	31%
<b>Housing and Households</b>				
Total housing units	8,914	9,025	782,378	909,336
Occupied	91%	91%	92%	88%
Vacant	9%	9%	8%	12%
Total households	8,109	8,227	717,945	799,714
Family households	6,335	6,240	457,549	491,778
Median Housing Value	\$55,315	\$80,779	\$79,300	\$131,700

### Description

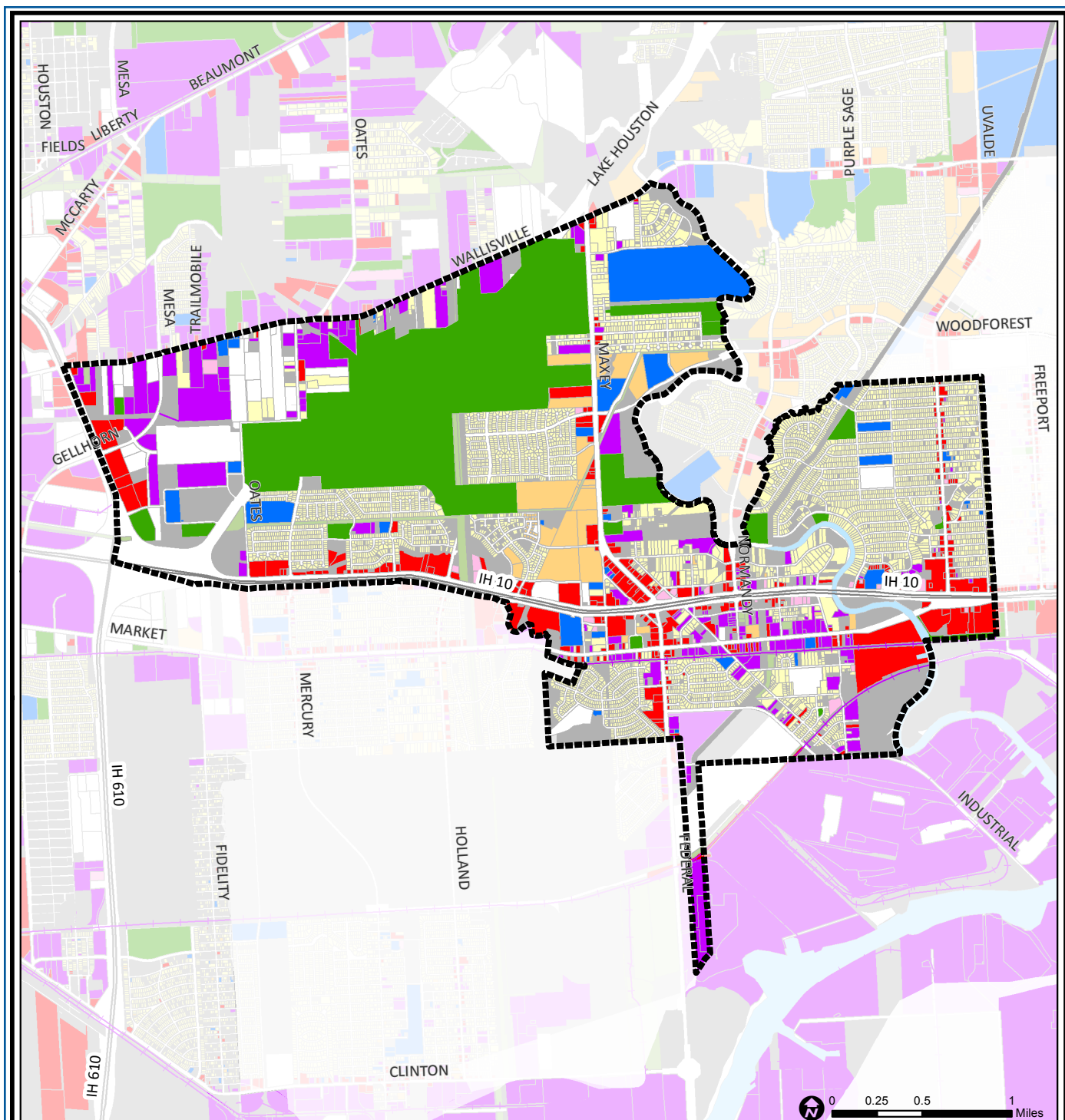
Northshore is an area immediately north of the Houston Ship Channel, east of Loop 610. The community includes subdivisions such as Songwood, Holiday Forest, Wood Bayou, Cimarron, Home Owned Estates, Woodland Acres, Hidden Forest and Greens Bayou. Neighborhoods east of Greens Bayou and those south of Market Street are in Galena Park ISD. The balance of the area is in Houston ISD. This heavily wooded area includes a variety of home styles and prices. In the 1980s, the Brown Foundation donated a large tract of land that the Crosby Freeway (Highway 90) passes through.

### Highlights

- ✓ Houston City Council Districts I & E
- ✓ Houston Independent School District
- ✓ Galena Park Independent School District
- ✓ 3 Police beats (includes bordering beats)
- ✓ 5,928 acres (9.26 sq. miles)



**PLANNING &  
DEVELOPMENT  
DEPARTMENT**



## Northshore: Land Use

Freeway	Commercial	Parks and Open Space
Rail Road	Office	Undeveloped
Super Neighborhood Boundary	Industrial	Agricultural Production
Single-family Residential	Public and Institutional	Open Water
Multi-family Residential	Transportation and Utilities	Unknown

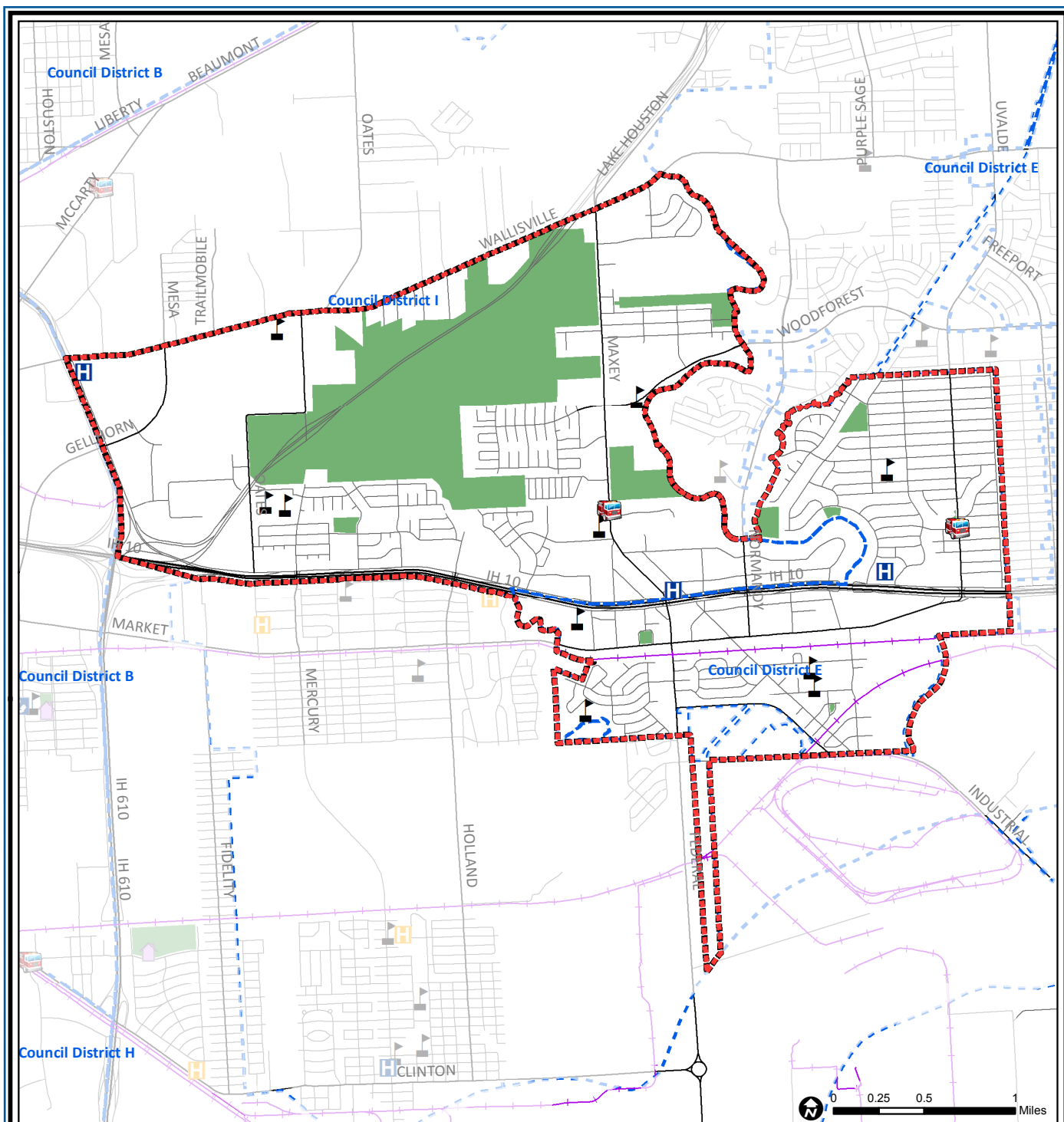
Source: City of Houston GIS Database,  
Harris County Appraisal District

Date: November 16, 2017

This map is made available for reference purposes only and should not be substituted for a survey product. The City of Houston will not accept liability of any kind in conjunction with its use.



**PLANNING &  
DEVELOPMENT  
DEPARTMENT**



## Northshore: Public Facilities

	Super Neighborhood Boundary		Airports		Rail Road
	Community Centers		Harris County Hospitals		Metro Rail Stations
	Fire Station		Private Hospitals		Metro Rail Line
	Police Station		Other Health Facilities		Parks
	School		Library		TIRZ

Source: City of Houston GIS Database

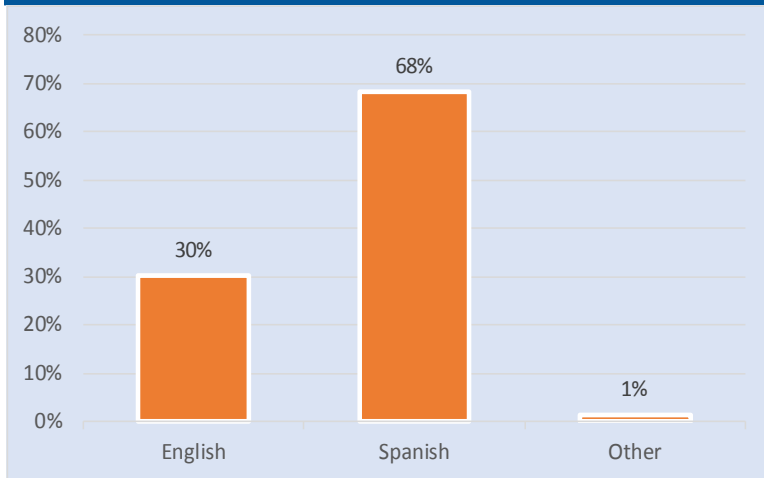
Date: October 2017

This map is made available for reference purposes only and should not be substituted for a survey product. The City of Houston will not accept liability of any kind in conjunction with its use.

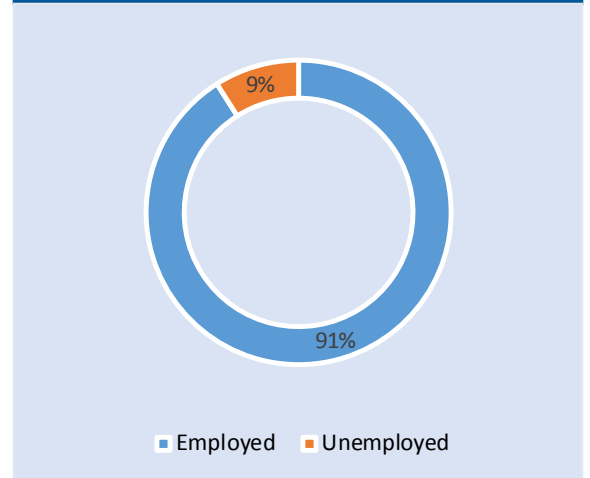


**PLANNING &  
DEVELOPMENT  
DEPARTMENT**

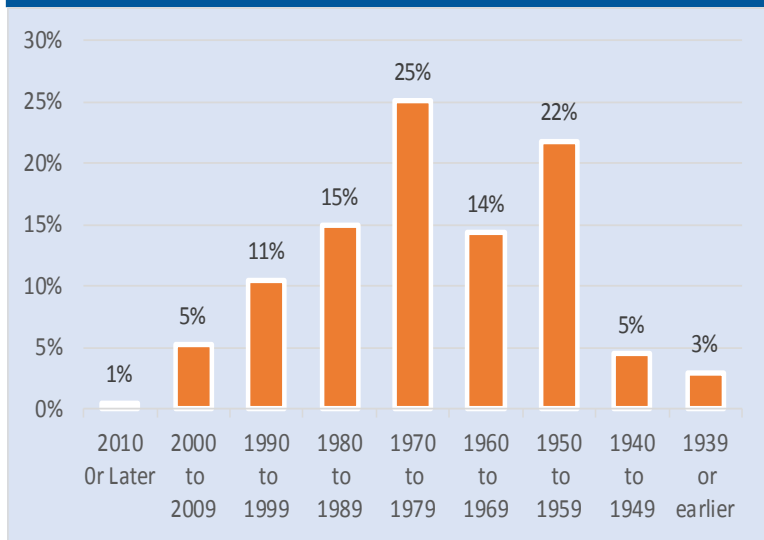
### Language Spoken at Home



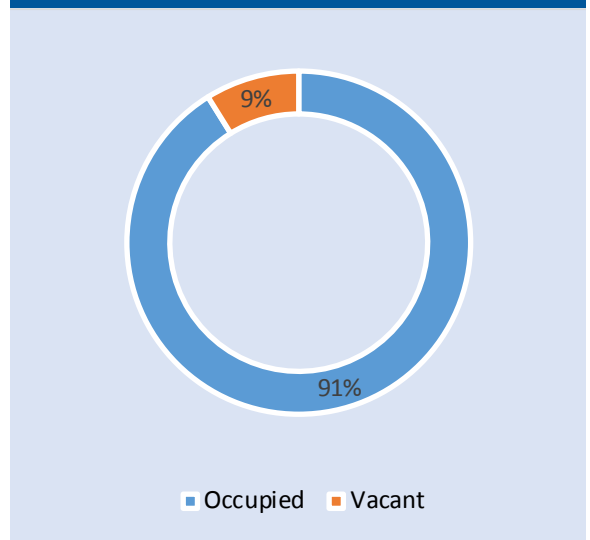
### Employment Status



### Housing Units by Year Built



### Housing Occupancy



Source: U.S. Census Bureau, 2000  
American Community Survey, 2011-2015 Estimates



**PLANNING &  
DEVELOPMENT  
DEPARTMENT**