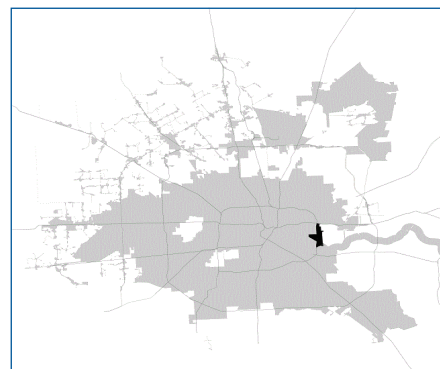


SUPER

Neighborhood

RESOURCE ASSESSMENT



	Super Neighborhood		Houston	
Pop. characteristics	2000	2015	2000	2015
Total population	2,437	3,140	1,953,631	2,217,706
Persons per sq. mile	886	1,144	3,166	3,314
Age of Population				
Under 5 years	6%	9%	8%	8%
5- 17 years	22%	16%	19%	17%
18- 64 years	54%	63%	64%	65%
65 and over	18%	12%	9%	10%
Ethnicity				
Non Hispanic Whites	1%	5%	31%	26%
Non Hispanic Blacks	91%	48%	25%	22%
Hispanics	8%	44%	37%	44%
Non Hispanic Asians	0%	1%	6%	7%
Non Hispanic Others	1%	2%	1%	1%
Income				
Under \$25,000	51%	42%	33%	27%
\$25,001 to \$50,000	34%	35%	31%	25%
\$50,001 to \$100,000	14%	18%	24%	26%
Over \$100,001	2%	6%	12%	22%
Median Household Income	\$23,267	\$31,826	\$36,616	\$46,187
Educational Status				
No Diploma	40%	31%	30%	23%
High School Diploma	33%	35%	20%	23%
Some College	20%	24%	23%	24%
Bachelor's or Higher	6%	10%	27%	31%
Housing and Households				
Total housing units	1,073	1,398	782,378	909,336
Occupied	85%	83%	92%	88%
Vacant	15%	17%	8%	12%
Total households	909	1,163	717,945	799,714
Family households	610	684	457,549	491,778
Median Housing Value	\$32,888	\$68,741	\$79,300	\$131,700

Description

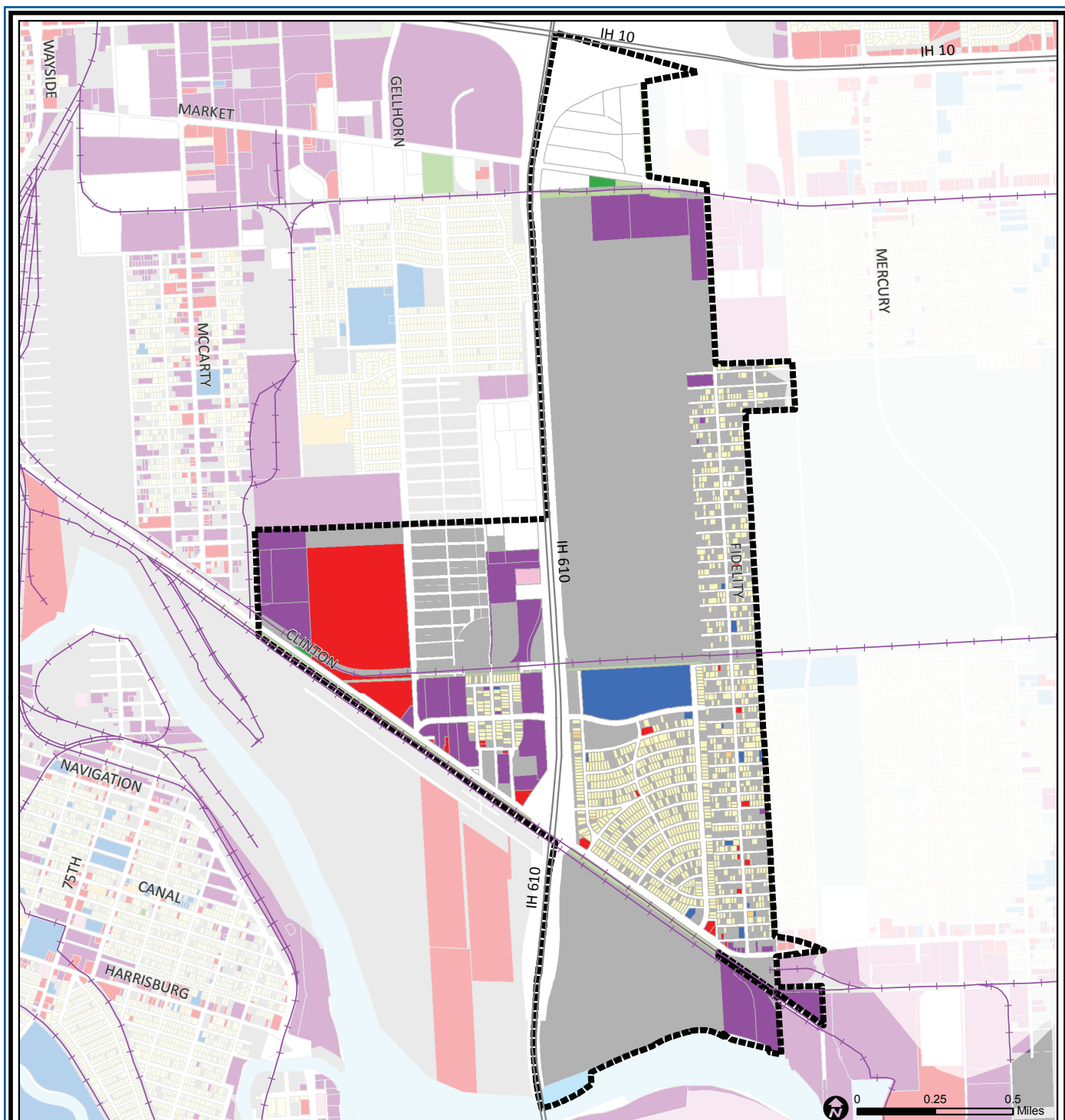
Clinton Park/Fidelity is a small community located just north of Clinton Drive, adjacent to the City of Galena Park. It is split between Houston ISD (Clinton Park) and Galena Park ISD (Fidelity), and includes a part of the Port of Houston. From its inception, this area has been almost exclusively an African-American community. Development began in the area spurred by the proximity to jobs in the Port and nearby Ship Channel industries. Large holding ponds containing materials dredged from the Houston Ship Channel are located adjacent to the residential areas.

Highlights

- ✓ Houston City Council Districts I, B & H
- ✓ Houston Independent School District
- ✓ Galena Park Independent School District
- ✓ 1 Police beat (includes bordering beats)
- ✓ 1,758 acres (2.75 sq. miles)



**PLANNING &
DEVELOPMENT
DEPARTMENT**



Clinton Park / Tri-Community: Land Use

	Freeway		Commercial		Parks and Open Space
	Rail Road		Office		Undeveloped
	Super Neighborhood Boundary		Industrial		Agricultural Production
	Single-family Residential		Public and Institutional		Open Water
	Multi-family Residential		Transportation and Utilities		Unknown

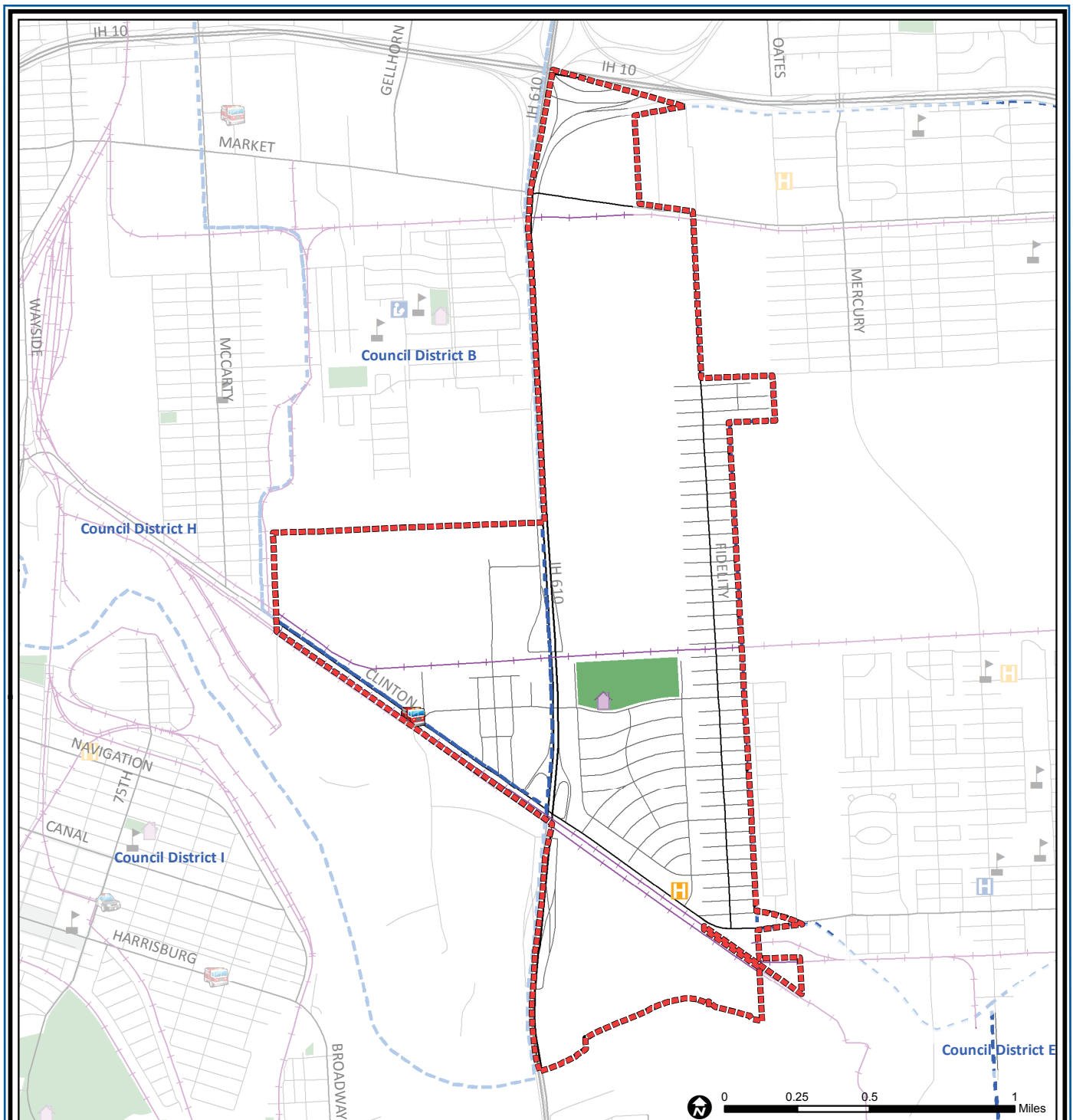
Source: City of Houston GIS Database,
Harris County Appraisal District

Date: November 15, 2017

This map is made available for reference purposes only and should not be substituted for a survey product. The City of Houston will not accept liability of any kind in conjunction with its use.



**PLANNING &
DEVELOPMENT
DEPARTMENT**



Clinton Park Tri-Community: Public Facilities

	Super Neighborhood Boundary		Airports		Rail Road
	Community Centers		Harris County Hospitals		Metro Rail Stations
	Fire Station		Private Hospitals		Metro Rail Line
	Police Station		Other Health Facilities		Parks
	School		Library		TIRZ

Source: City of Houston GIS Database

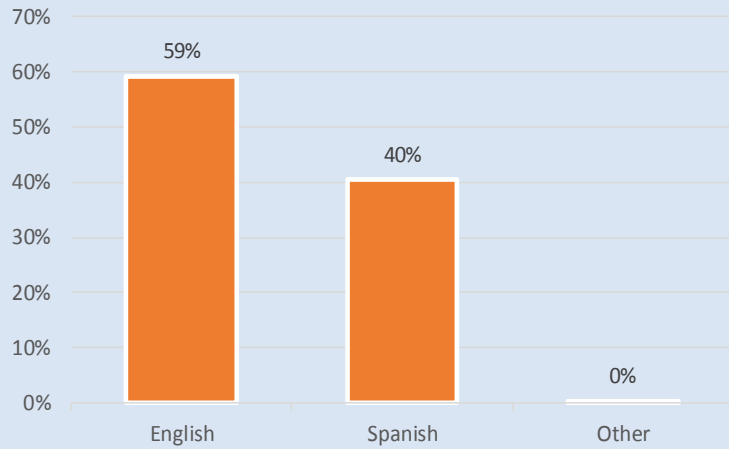
Date: October 2017

This map is made available for reference purposes only and should not be substituted for a survey product. The City of Houston will not accept liability of any kind in conjunction with its use.

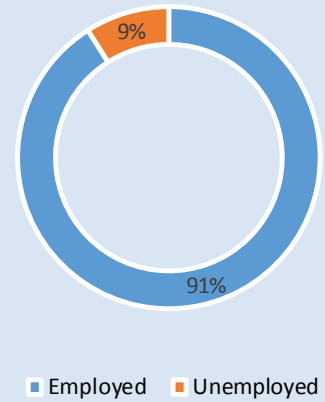


**PLANNING &
DEVELOPMENT
DEPARTMENT**

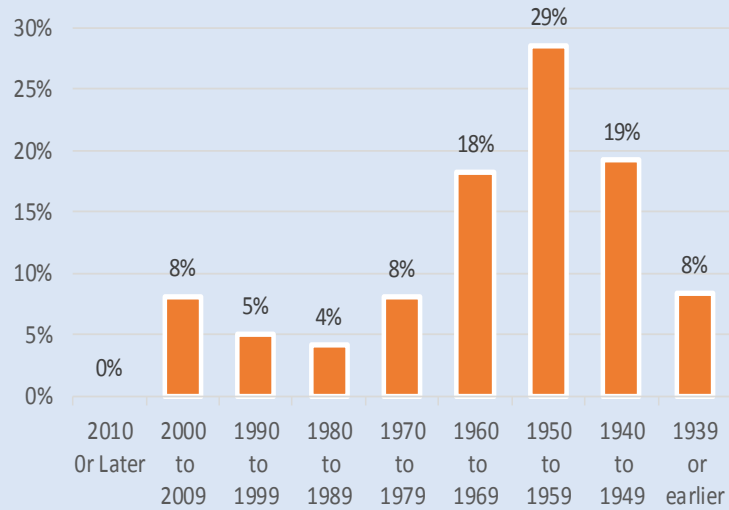
Language Spoken at Home



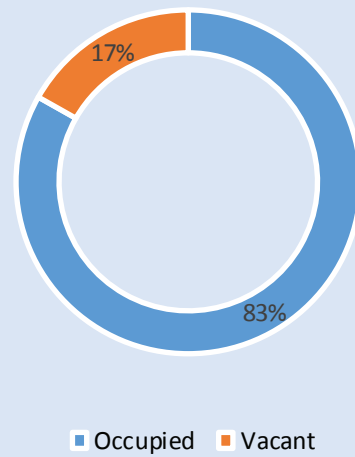
Employment Status



Housing Units by Year Built



Housing Occupancy



Source: U.S. Census Bureau, 2000
American Community Survey, 2011-2015 Estimates



**PLANNING &
DEVELOPMENT
DEPARTMENT**