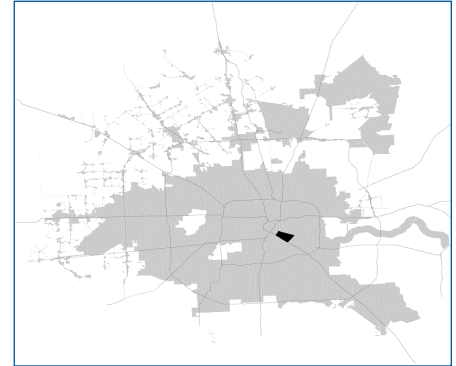


SUPER

Neighborhood

RESOURCE ASSESSMENT



	Super Neighborhood		Houston	
Pop. characteristics	2000	2015	2000	2015
Total population	13,639	10,776	1,953,631	2,217,706
Persons per sq. mile	7,255	5,747	3,166	3,314
Age of Population				
Under 5 years	9%	6%	8%	8%
5- 17 years	21%	17%	19%	17%
18- 64 years	63%	67%	64%	65%
65 and over	7%	10%	9%	10%
Ethnicity				
Non Hispanic Whites	10%	15%	31%	26%
Non Hispanic Blacks	5%	5%	25%	22%
Hispanics	82%	78%	37%	44%
Non Hispanic Asians	3%	2%	6%	7%
Non Hispanic Others	1%	0%	1%	1%
Income				
Under \$25,000	42%	28%	33%	27%
\$25,001 to \$50,000	33%	33%	31%	25%
\$50,001 to \$100,000	21%	27%	24%	26%
Over \$100,001	4%	12%	12%	22%
Median Household Income	\$29,537	\$48,426	\$36,616	\$46,187
Educational Status				
No Diploma	56%	31%	30%	23%
High School Diploma	21%	26%	20%	23%
Some College	13%	24%	23%	24%
Bachelor's or Higher	11%	19%	27%	31%
Housing and Households				
Total housing units	4,760	4,925	782,378	909,336
Occupied	89%	83%	92%	88%
Vacant	11%	17%	8%	12%
Total households	4,247	4,092	717,945	799,714
Family households	2,943	2,502	457,549	491,778
Median Housing Value	\$66,176	\$147,557	\$79,300	\$131,700

Description

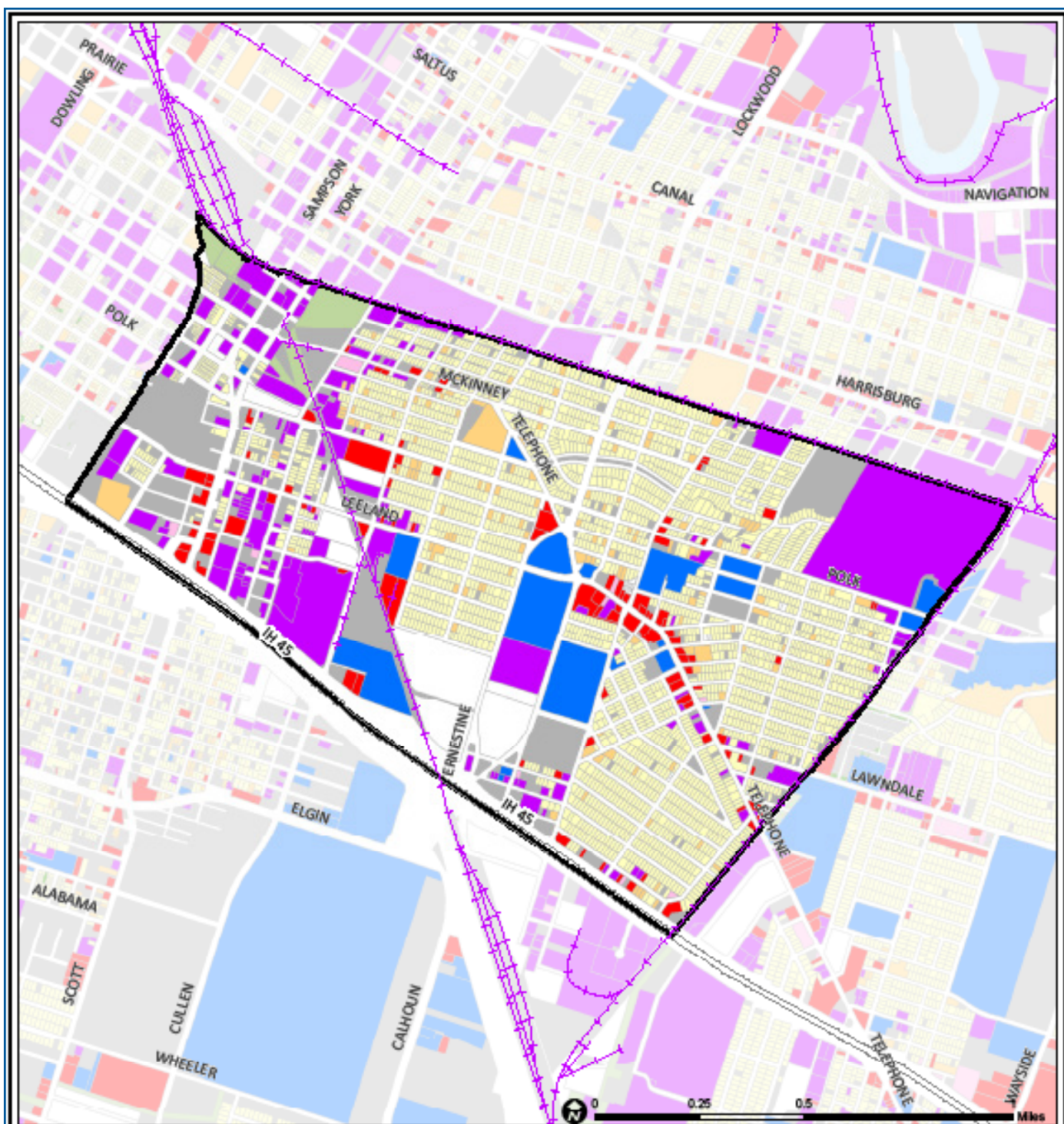
Eastwood/Lawndale is a collection of middle class, single-family-home subdivisions developed before World War II and located southeast of Downtown. The construction of the Gulf Freeway in the 1950s created a commercial edge on its south. The area was once exclusively Anglo, but through the growth of Houston's Hispanic middle class in recent decades, its population is now largely Hispanic. Renovation of its stock of well-built bungalows and duplexes was cut short by the real estate collapse of the 1980s. However, a revival of interest in renovation in the area is occurring.

Highlights

- ✓ Houston City Council Districts I & H
- ✓ Houston Independent School District
- ✓ 3 Police beats (includes bordering beats)
- ✓ 1,201 acres (1.88 sq. miles)



**PLANNING &
DEVELOPMENT
DEPARTMENT**



Greater Eastwood: Land Use

Freeway	Commercial	Parks and Open Space
Rail Road	Office	Undeveloped
Super Neighborhood Boundary	Industrial	Agricultural Production
Single-family Residential	Public and Institutional	Open Water
Multi-family Residential	Transportation and Utilities	Unknown

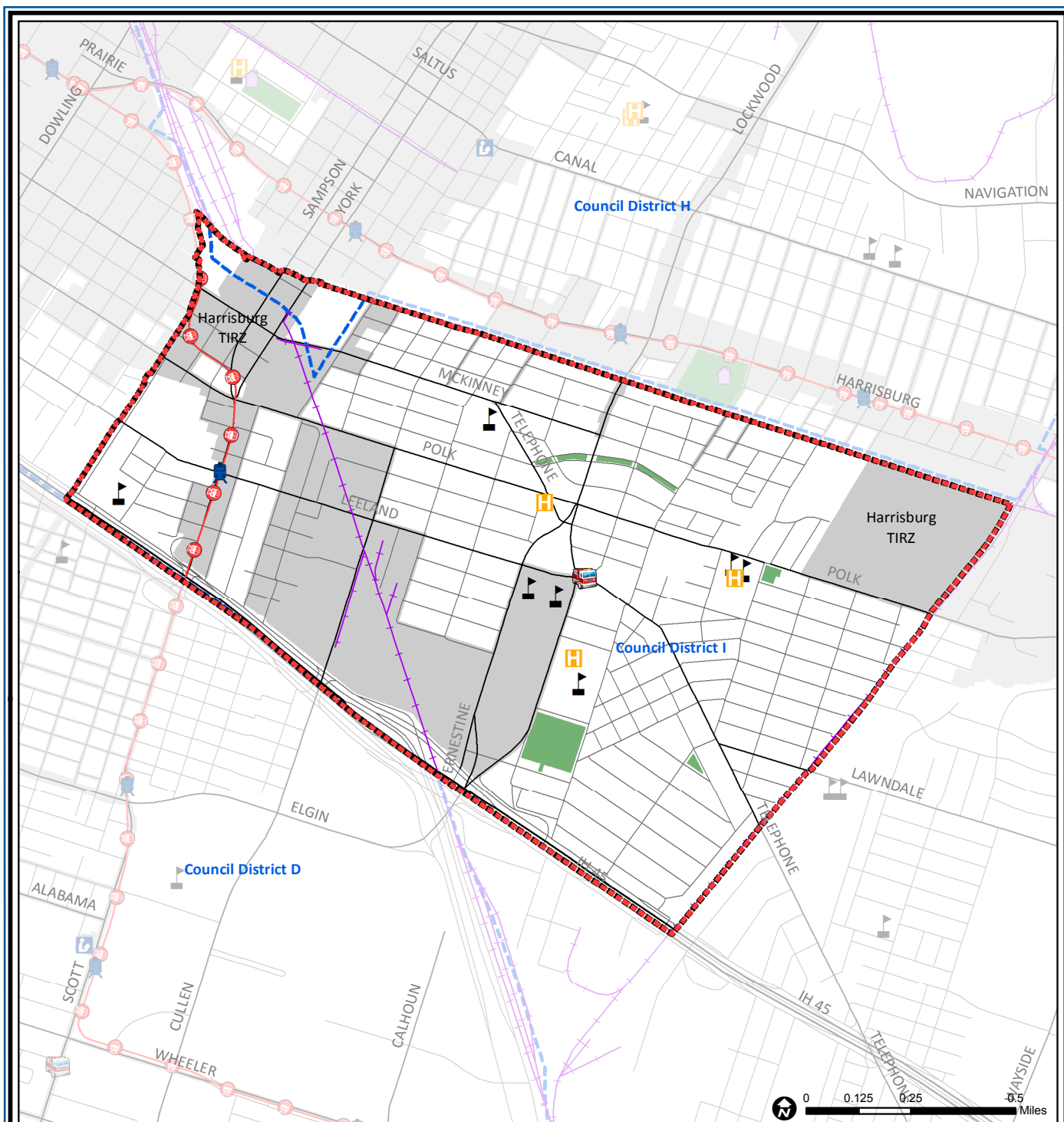
Source: City of Houston GIS Database,
Harris County Appraisal District

Date: November 3, 2017

This map is made available for reference purposes only and should not be substituted for a survey product. The City of Houston will not accept liability of any kind in conjunction with its use.



**PLANNING &
DEVELOPMENT
DEPARTMENT**



Greater Eastwood: Public Facilities

	Super Neighborhood Boundary		Airports		Rail Road
	Community Centers		Harris County Hospitals		Metro Rail Stations
	Fire Station		Private Hospitals		Metro Rail Line
	Police Station		Other Health Facilities		Parks
	School		Library		TIRZ

Source: City of Houston GIS Database

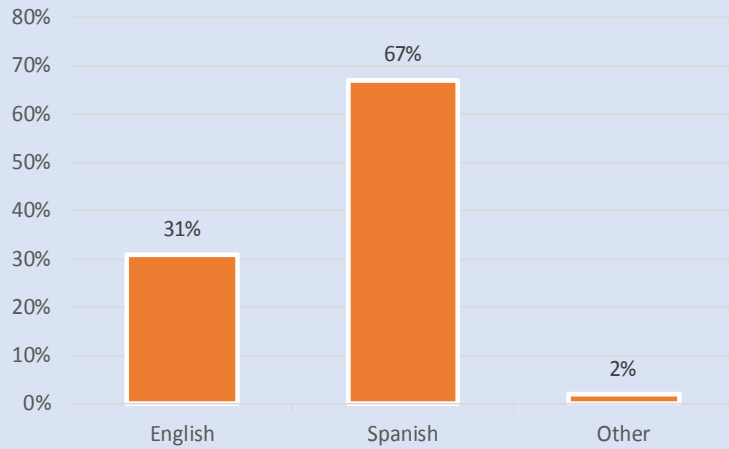
Date: October 2017

This map is made available for reference purposes only and should not be substituted for a survey product. The City of Houston will not accept liability of any kind in conjunction with its use.

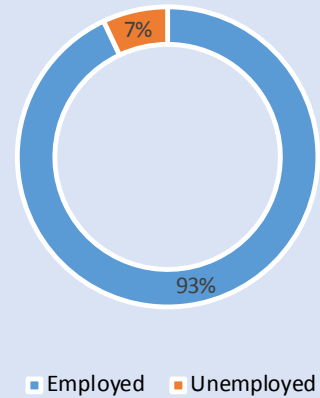


**PLANNING &
DEVELOPMENT
DEPARTMENT**

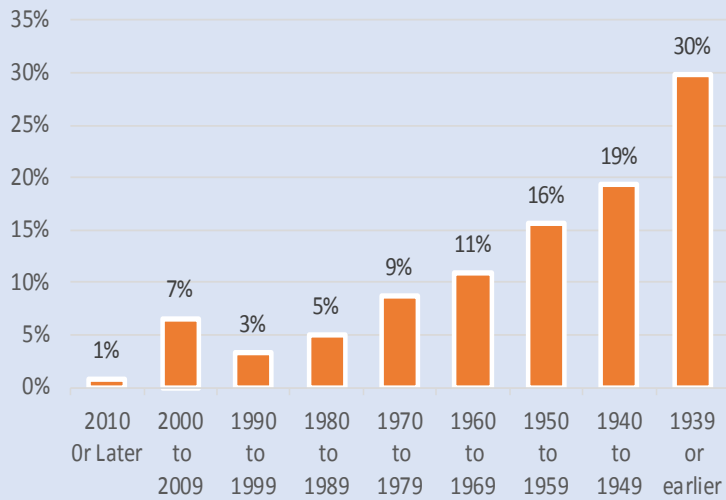
Language Spoken at Home



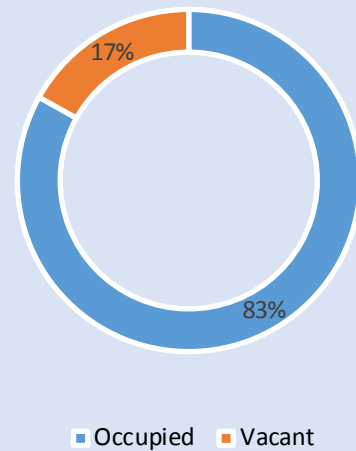
Employment Status



Housing Units by Year Built



Housing Occupancy



Source: U.S. Census Bureau, 2000
American Community Survey, 2011-2015 Estimates



**PLANNING &
DEVELOPMENT
DEPARTMENT**