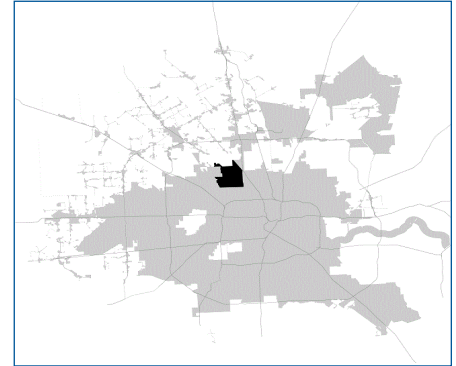


SUPER

Neighborhood

RESOURCE ASSESSMENT



| | Super Neighborhood | | Houston | |
|--------------------------------|--------------------|-----------|-----------|-----------|
| Pop. characteristics | 2000 | 2015 | 2000 | 2015 |
| Total population | 23,512 | 25,828 | 1,953,631 | 2,217,706 |
| Persons per sq. mile | 2,624 | 2,883 | 3,166 | 3,314 |
| Age of Population | | | | |
| Under 5 years | 8% | 8% | 8% | 8% |
| 5- 17 years | 23% | 18% | 19% | 17% |
| 18- 64 years | 57% | 60% | 64% | 65% |
| 65 and over | 12% | 14% | 9% | 10% |
| Ethnicity | | | | |
| Non Hispanic Whites | 2% | 5% | 31% | 26% |
| Non Hispanic Blacks | 86% | 71% | 25% | 22% |
| Hispanics | 10% | 23% | 37% | 44% |
| Non Hispanic Asians | 0% | 0% | 6% | 7% |
| Non Hispanic Others | 1% | 0% | 1% | 1% |
| Income | | | | |
| Under \$25,000 | 51% | 41% | 33% | 27% |
| \$25,001 to \$50,000 | 26% | 28% | 31% | 25% |
| \$50,001 to \$100,000 | 18% | 22% | 24% | 26% |
| Over \$100,001 | 5% | 9% | 12% | 22% |
| Median Household Income | \$24,518 | \$39,269 | \$36,616 | \$46,187 |
| Educational Status | | | | |
| No Diploma | 38% | 25% | 30% | 23% |
| High School Diploma | 30% | 35% | 20% | 23% |
| Some College | 23% | 27% | 23% | 24% |
| Bachelor's or Higher | 10% | 12% | 27% | 31% |
| Housing and Households | | | | |
| Total housing units | 8,548 | 10,054 | 782,378 | 909,336 |
| Occupied | 93% | 89% | 92% | 88% |
| Vacant | 7% | 11% | 8% | 12% |
| Total households | 7,943 | 8,962 | 717,945 | 799,714 |
| Family households | 5,871 | 5,825 | 457,549 | 491,778 |
| Median Housing Value | \$48,095 | \$116,525 | \$79,300 | \$131,700 |

Description

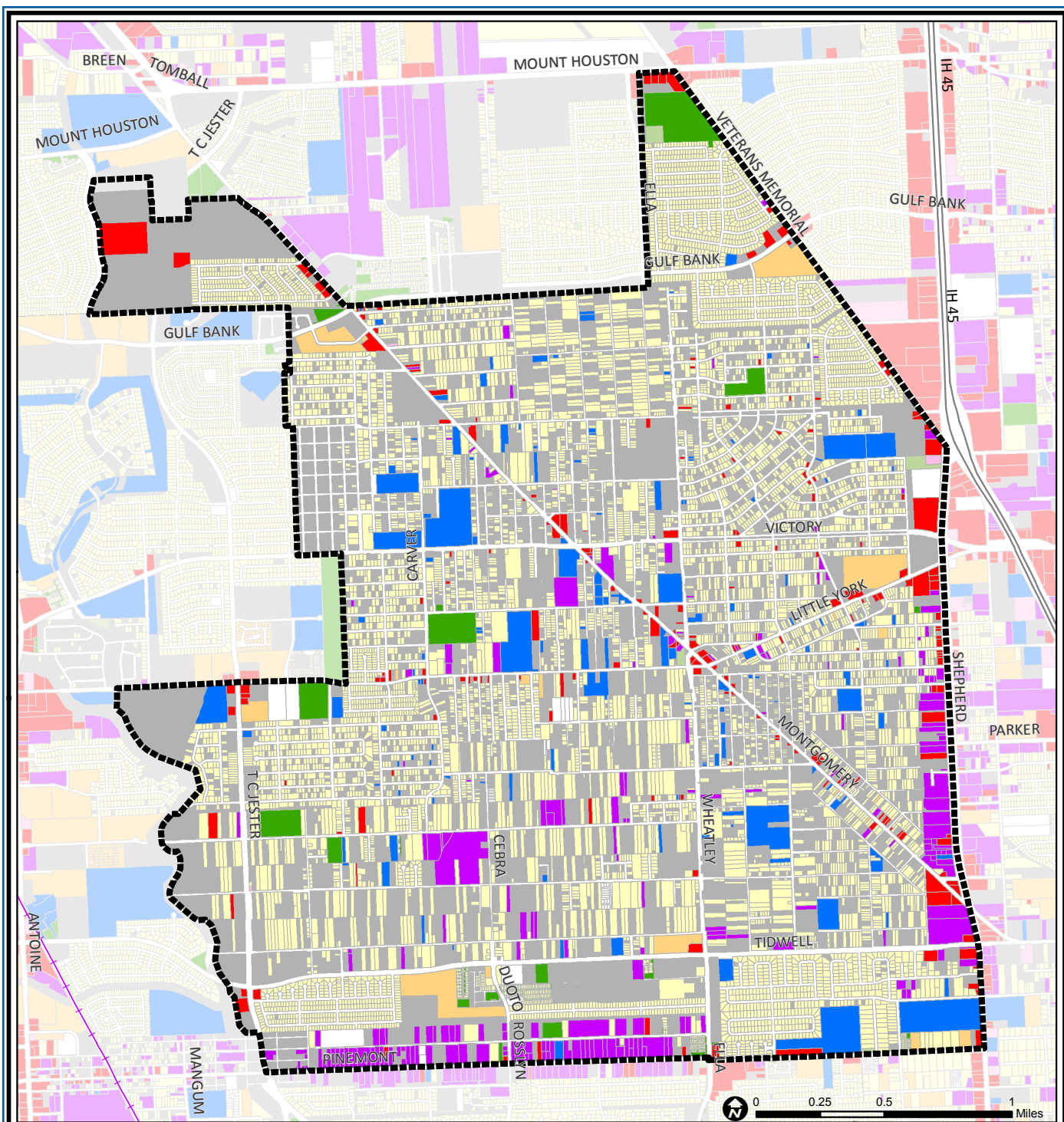
Acres Homes, a wooded area northwest of the city, was originally subdivided into large lots and marketed to African-Americans. Still primarily African-American, the community now includes a combination of large areas of pine forests with only a scattering of homes: small tract homes built in standard suburban subdivisions, and large comfortable homes on well-maintained wooded lots. There is little commercial or industrial development. The eastern part of the community is located in the Houston Independent School District (ISD), the western part is in the Aldine ISD. Water and sewer service was introduced into the original subdivisions during the 1970s as the area was annexed by the City of Houston.

Highlights

- ✓ Houston City Council Districts B, A, C, H
- ✓ Houston Independent School District
- ✓ Aldine Independent School District
- ✓ Klein Independent School District
- ✓ 5 Police beats (includes bordering beats)
- ✓ 5,733 acres (8.96 sq. miles)



**PLANNING &
DEVELOPMENT
DEPARTMENT**



Acres Home: Land Use

| | | | | | |
|--|-----------------------------|--|------------------------------|--|-------------------------|
| | Freeway | | Commercial | | Parks and Open Space |
| | Rail Road | | Office | | Undeveloped |
| | Super Neighborhood Boundary | | Industrial | | Agricultural Production |
| | Single-family Residential | | Public and Institutional | | Open Water |
| | Multi-family Residential | | Transportation and Utilities | | Unknown |

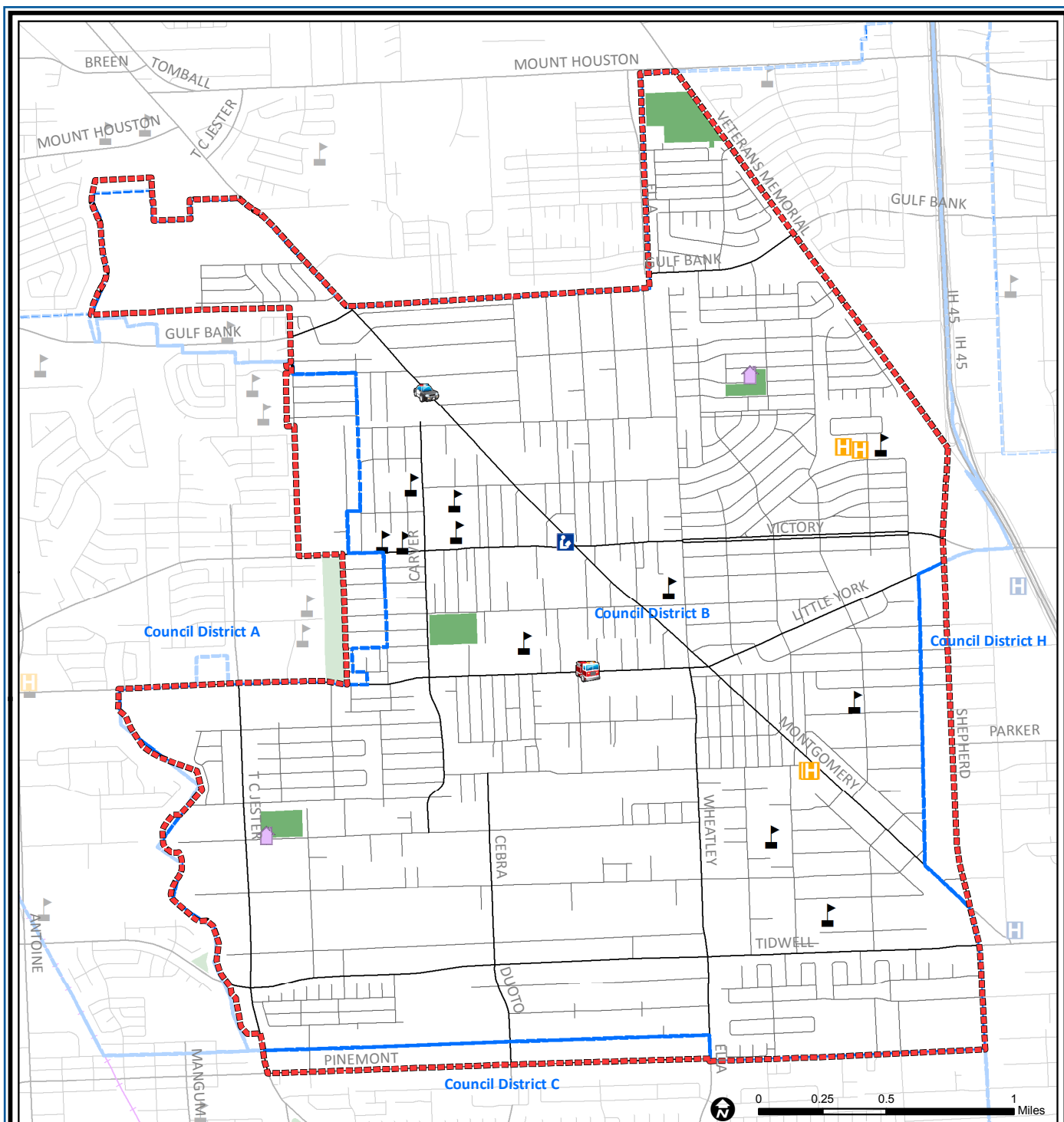
Source: City of Houston GIS Database,
Harris County Appraisal District

Date: November 15, 2017

This map is made available for reference purposes only and should not be substituted for a survey product. The City of Houston will not accept liability of any kind in conjunction with its use.



**PLANNING &
DEVELOPMENT
DEPARTMENT**



Acres Home: Public Facilities

| | | | | | |
|--|-----------------------------|--|-------------------------|--|---------------------|
| | Super Neighborhood Boundary | | Airports | | Rail Road |
| | Community Centers | | Harris County Hospitals | | Metro Rail Stations |
| | Fire Station | | Private Hospitals | | Metro Rail Line |
| | Police Station | | Other Health Facilities | | Parks |
| | School | | Library | | TIRZ |

Source: City of Houston GIS Database

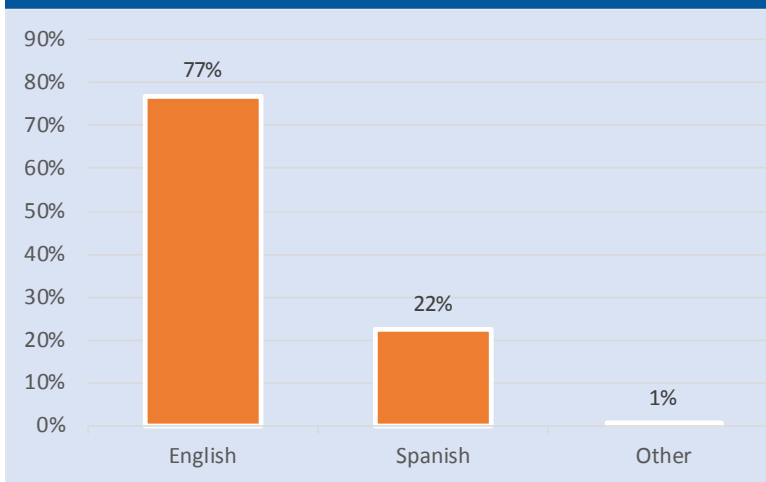
Date: October 2017

This map is made available for reference purposes only and should not be substituted for a survey product. The City of Houston will not accept liability of any kind in conjunction with its use.

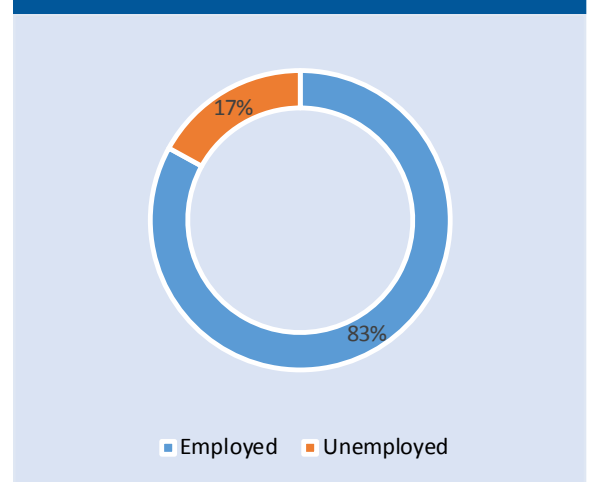


**PLANNING &
DEVELOPMENT
DEPARTMENT**

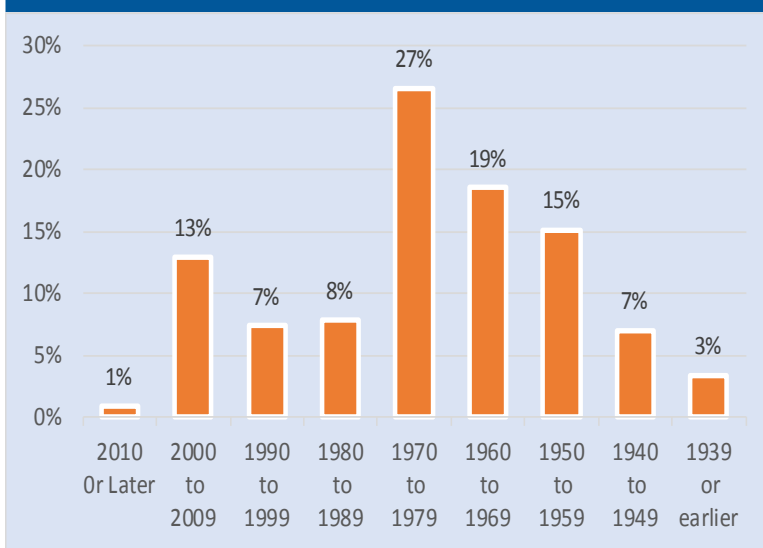
Language Spoken at Home



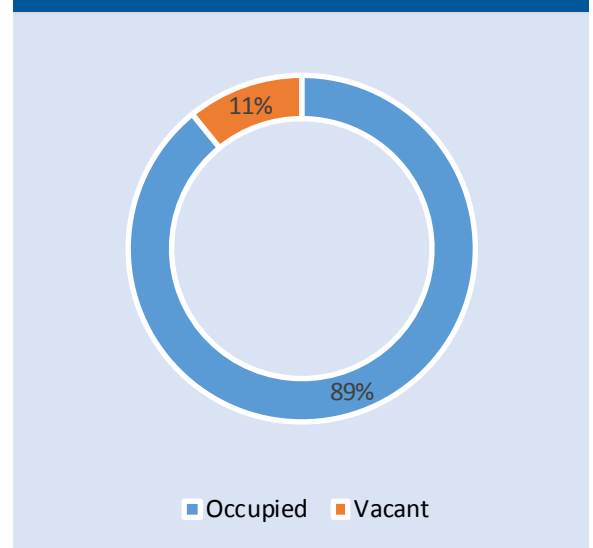
Employment Status



Housing Units by Year Built



Housing Occupancy



Source: U.S. Census Bureau, 2000
American Community Survey, 2011-2015 Estimates



**PLANNING &
DEVELOPMENT
DEPARTMENT**