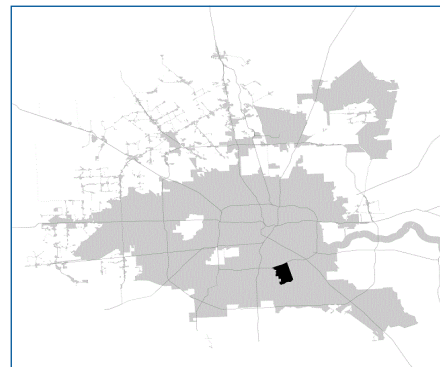


# SUPER

## Neighborhood

### RESOURCE ASSESSMENT



	Super Neighborhood		Houston	
Pop. characteristics	2000	2015	2000	2015
Total population	22,282	21,208	1,953,631	2,217,706
Persons per sq. mile	5,098	4,848	3,166	3,314
<b>Age of Population</b>				
Under 5 years	7%	6%	8%	8%
5- 17 years	23%	20%	19%	17%
18- 64 years	59%	60%	64%	65%
65 and over	11%	14%	9%	10%
<b>Ethnicity</b>				
Non Hispanic Whites	1%	1%	31%	26%
Non Hispanic Blacks	81%	67%	25%	22%
Hispanics	16%	31%	37%	44%
Non Hispanic Asians	0%	0%	6%	7%
Non Hispanic Others	1%	2%	1%	1%
<b>Income</b>				
Under \$25,000	46%	41%	33%	27%
\$25,001 to \$50,000	34%	32%	31%	25%
\$50,001 to \$100,000	17%	20%	24%	26%
Over \$100,001	4%	6%	12%	22%
<b>Median Household Income</b>	\$27,060	\$29,475	\$36,616	\$46,187
<b>Educational Status</b>				
No Diploma	40%	33%	30%	23%
High School Diploma	32%	40%	20%	23%
Some College	22%	21%	23%	24%
Bachelor's or Higher	6%	6%	27%	31%
<b>Housing and Households</b>				
Total housing units	7,335	7,505	782,378	909,336
Occupied	94%	88%	92%	88%
Vacant	6%	12%	8%	12%
Total households	6,915	6,590	717,945	799,714
Family households	5,395	4,766	457,549	491,778
Median Housing Value	\$35,433	\$61,783	\$79,300	\$131,700

### Description

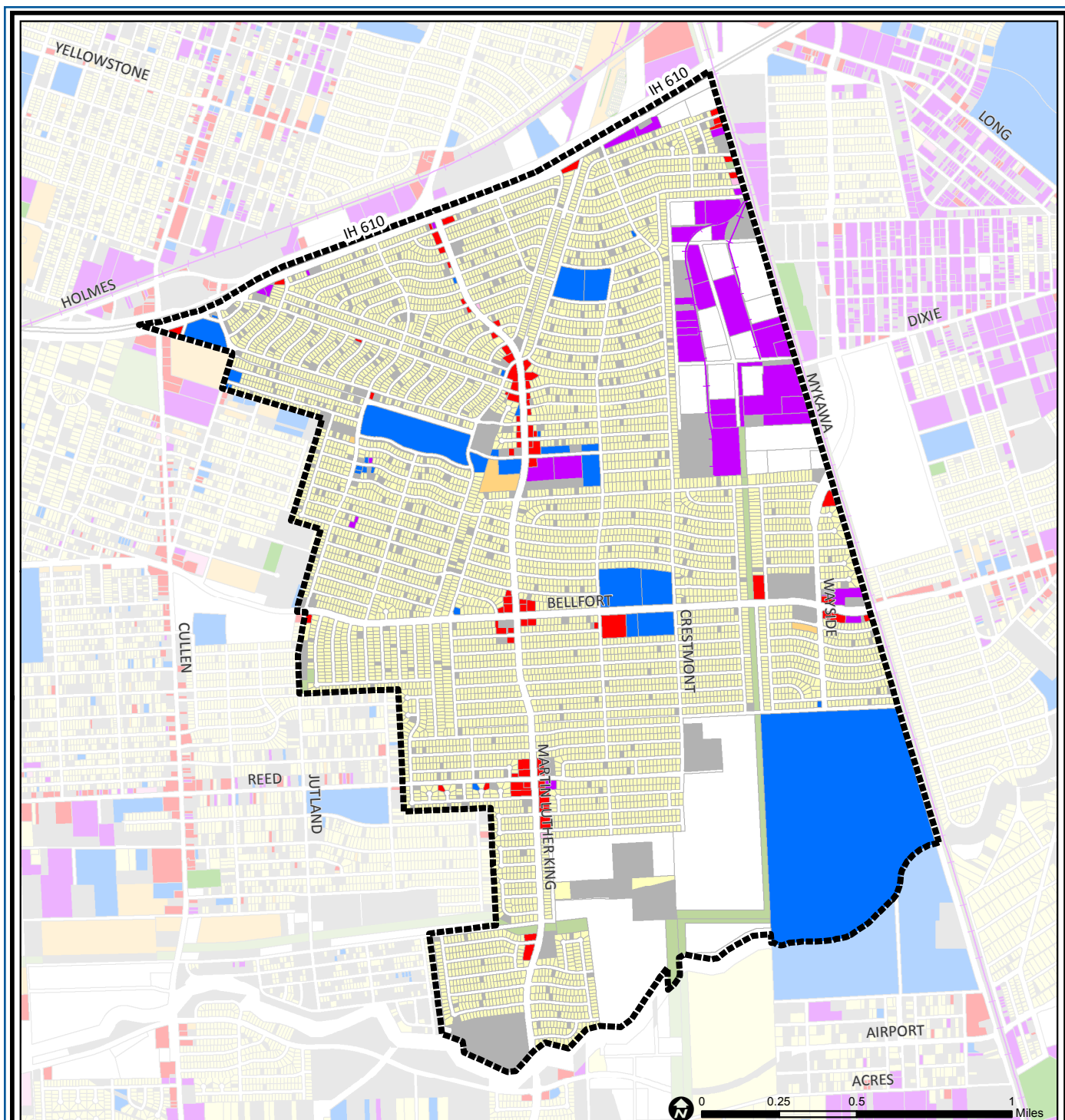
South Park is a series of tract-home subdivisions developed along South Park Boulevard during the 1950s. The oldest subdivision consists of small frame homes on streets named for World War II battles that the original home buyers, many of whom were returning veterans, knew from personal experience. Over the years, property values and household incomes have not kept pace with the city's growth in these indicators. Throughout the area, many small and well maintained homes remain, however, they are often adjacent to deteriorating properties or vacant lots. Many homes adjacent to the main thoroughfare, now called Martin Luther King Boulevard, have been converted to various commercial uses.

### Highlights

- ✓ Houston City Council District D
- ✓ Houston Independent School District
- ✓ 4 Police beats (includes bordering beats)
- ✓ 2,799 acres (4.37 sq. miles)



**PLANNING &  
DEVELOPMENT  
DEPARTMENT**



## South Park: Land Use

Freeway	Commercial	Parks and Open Space
Rail Road	Office	Undeveloped
Super Neighborhood Boundary	Industrial	Agricultural Production
Single-family Residential	Public and Institutional	Open Water
Multi-family Residential	Transportation and Utilities	Unknown

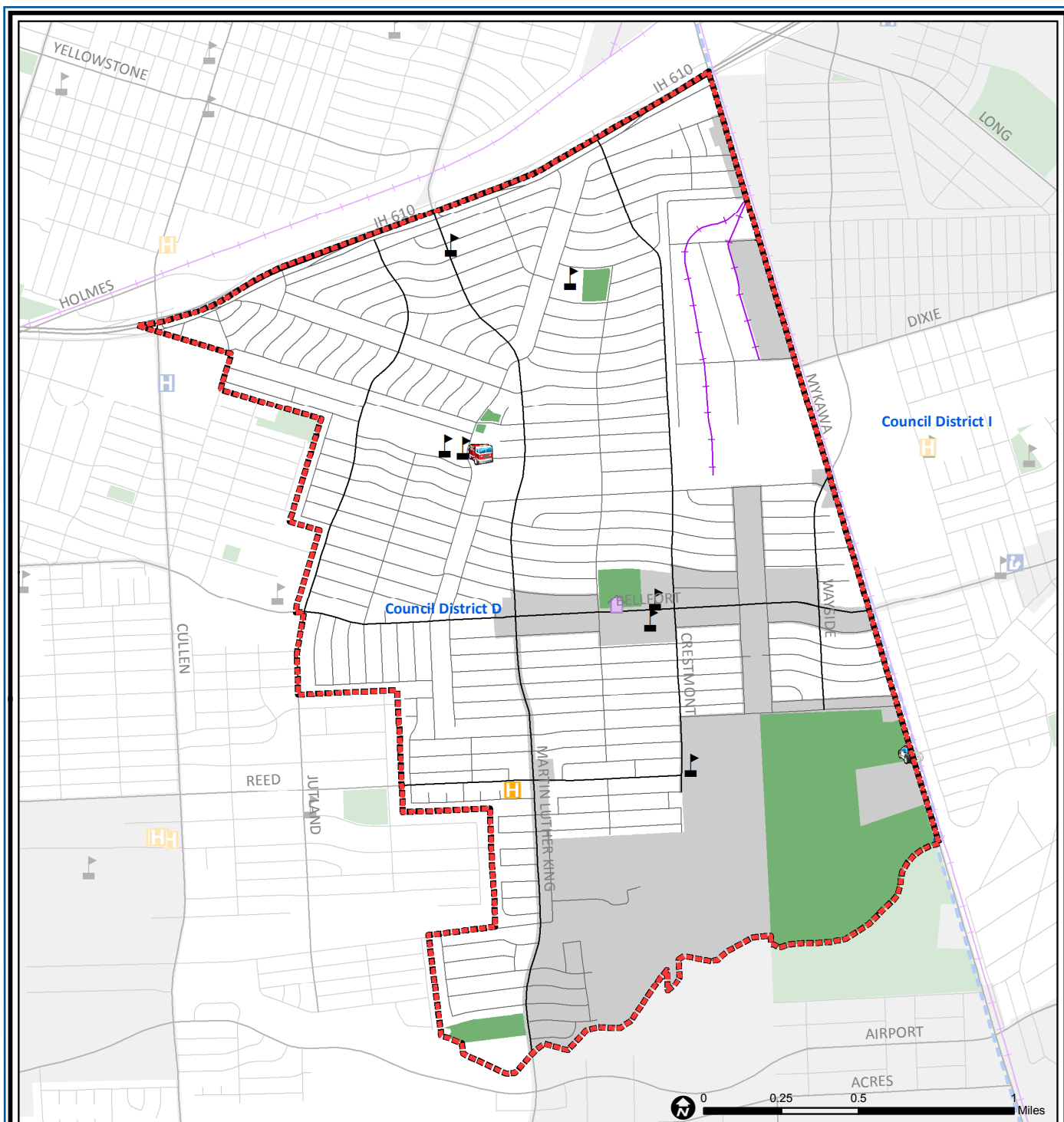
Source: City of Houston GIS Database,  
Harris County Appraisal District

Date: November 16, 2017

This map is made available for reference purposes only and should not be substituted for a survey product. The City of Houston will not accept liability of any kind in conjunction with its use.



**PLANNING &  
DEVELOPMENT  
DEPARTMENT**



## South Park: Public Facilities

	Super Neighborhood Boundary		Airports		Rail Road
	Community Centers		Harris County Hospitals		Metro Rail Stations
	Fire Station		Private Hospitals		Metro Rail Line
	Police Station		Other Health Facilities		Parks
	School		Library		TIRZ

Source: City of Houston GIS Database

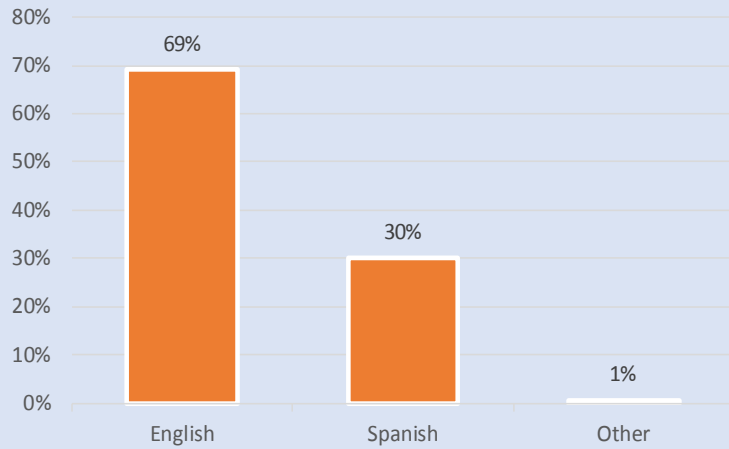
Date: December, 2017

This map is made available for reference purposes only and should not be substituted for a survey product. The City of Houston will not accept liability of any kind in conjunction with its use.

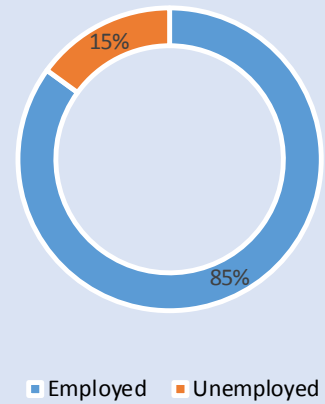


**PLANNING &  
DEVELOPMENT  
DEPARTMENT**

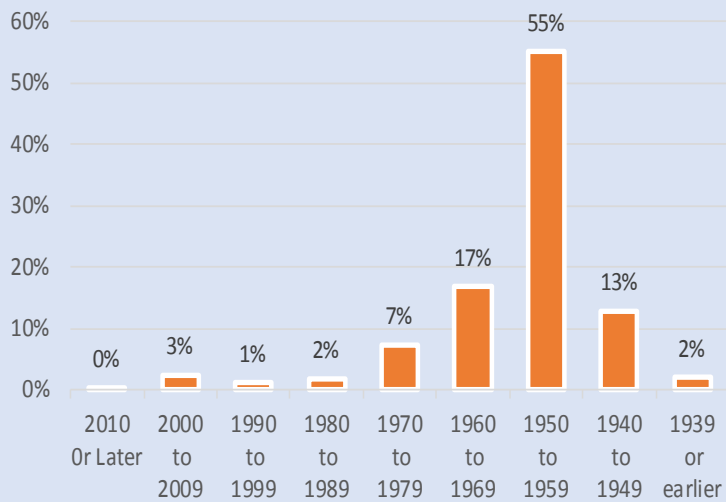
### Language Spoken at Home



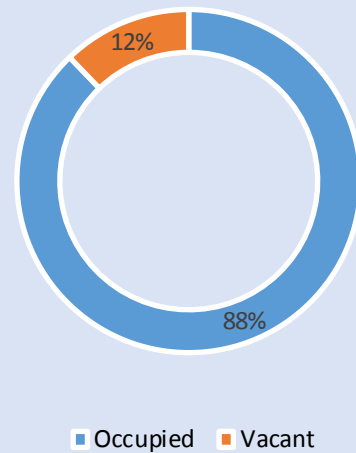
### Employment Status



### Housing Units by Year Built



### Housing Occupancy



Source: U.S. Census Bureau, 2000  
American Community Survey, 2011-2015 Estimates



**PLANNING &  
DEVELOPMENT  
DEPARTMENT**