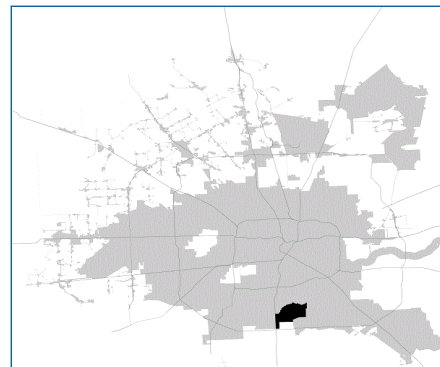


SUPER

Neighborhood

RESOURCE ASSESSMENT



	Super Neighborhood		Houston	
Pop. characteristics	2000	2015	2000	2015
Total population	18,224	19,137	1,953,631	2,217,706
Persons per sq. mile	2,670	2,833	3,166	3,314
Age of Population				
Under 5 years	7%	6%	8%	8%
5- 17 years	24%	18%	19%	17%
18- 64 years	57%	62%	64%	65%
65 and over	12%	15%	9%	10%
Ethnicity				
Non Hispanic Whites	1%	2%	31%	26%
Non Hispanic Blacks	95%	86%	25%	22%
Hispanics	3%	9%	37%	44%
Non Hispanic Asians	0%	1%	6%	7%
Non Hispanic Others	1%	2%	1%	1%
Income				
Under \$25,000	43%	33%	33%	27%
\$25,001 to \$50,000	33%	26%	31%	25%
\$50,001 to \$100,000	19%	29%	24%	26%
Over \$100,001	5%	12%	12%	22%
Median Household Income	\$30,168	\$46,175	\$36,616	\$46,187
Educational Status				
No Diploma	28%	16%	30%	23%
High School Diploma	33%	37%	20%	23%
Some College	28%	29%	23%	24%
Bachelor's or Higher	11%	18%	27%	31%
Housing and Households				
Total housing units	6,659	8,086	782,378	909,336
Occupied	92%	81%	92%	88%
Vacant	8%	19%	8%	12%
Total households	6,112	6,562	717,945	799,714
Family households	4,723	4,659	457,549	491,778
Median Housing Value	\$50,929	\$91,092	\$79,300	\$131,700

Description

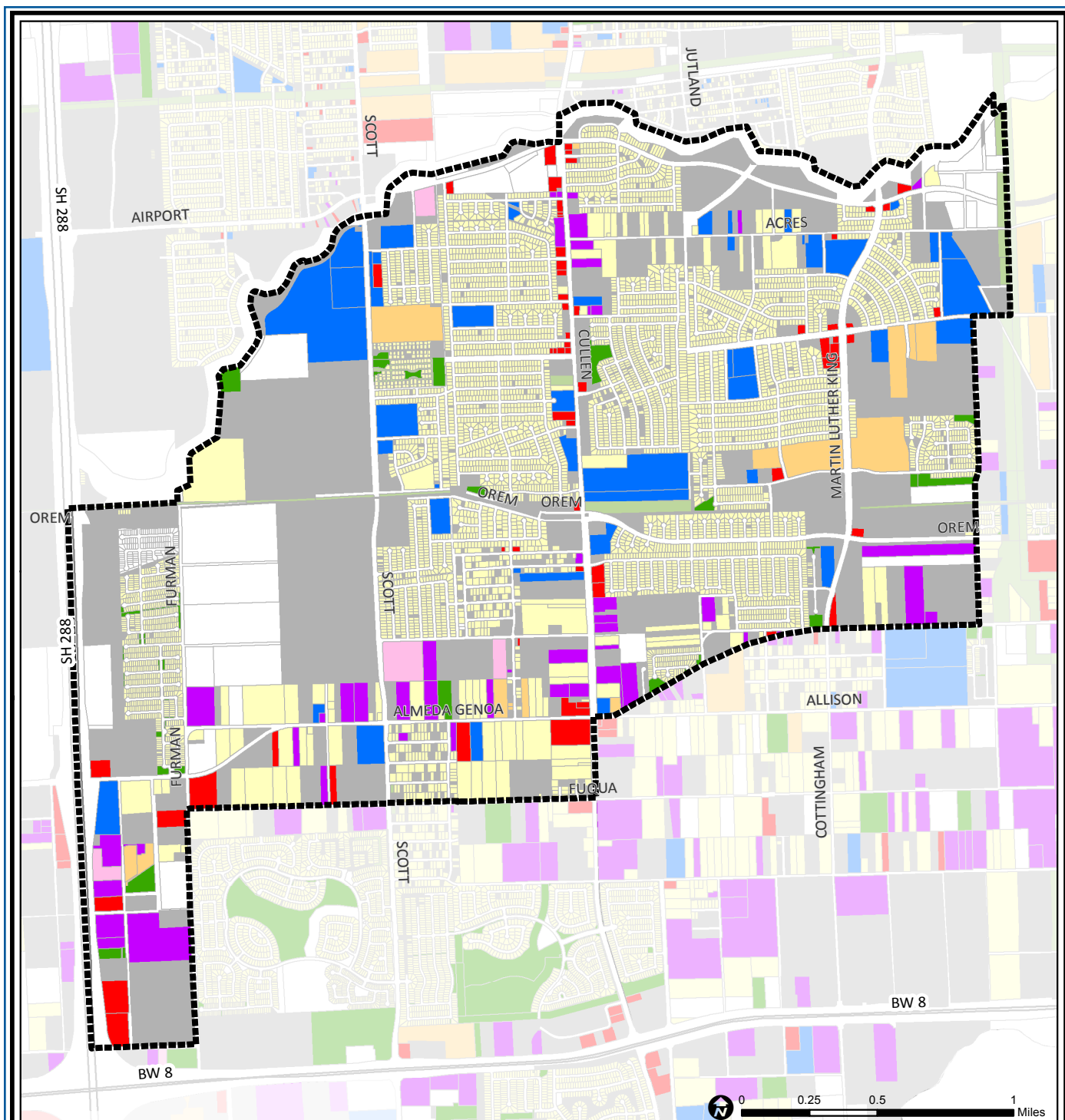
South Acres / Crestmont Park is a suburban area of south central Houston across Sims Bayou from Sunnyside. Most of the housing in the community is post-war single family in typical suburban street patterns, although there are some large apartment complexes on the eastern edge. The community is bordered by undeveloped land to the south, east and west, and was relatively inaccessible until the opening of the South Freeway in the early 1980s and the recent opening of the South Belt.

Highlights

- ✓ Houston City Council District D
- ✓ Houston Independent School District
- ✓ 5 Police beats (includes bordering beats)
- ✓ 4,323 acres (6.75 sq. miles)



**PLANNING &
DEVELOPMENT
DEPARTMENT**



South Acres / Crestmont Park: Land Use

Freeway	Commercial	Parks and Open Space
Rail Road	Office	Undeveloped
Super Neighborhood Boundary	Industrial	Agricultural Production
Single-family Residential	Public and Institutional	Open Water
Multi-family Residential	Transportation and Utilities	Unknown

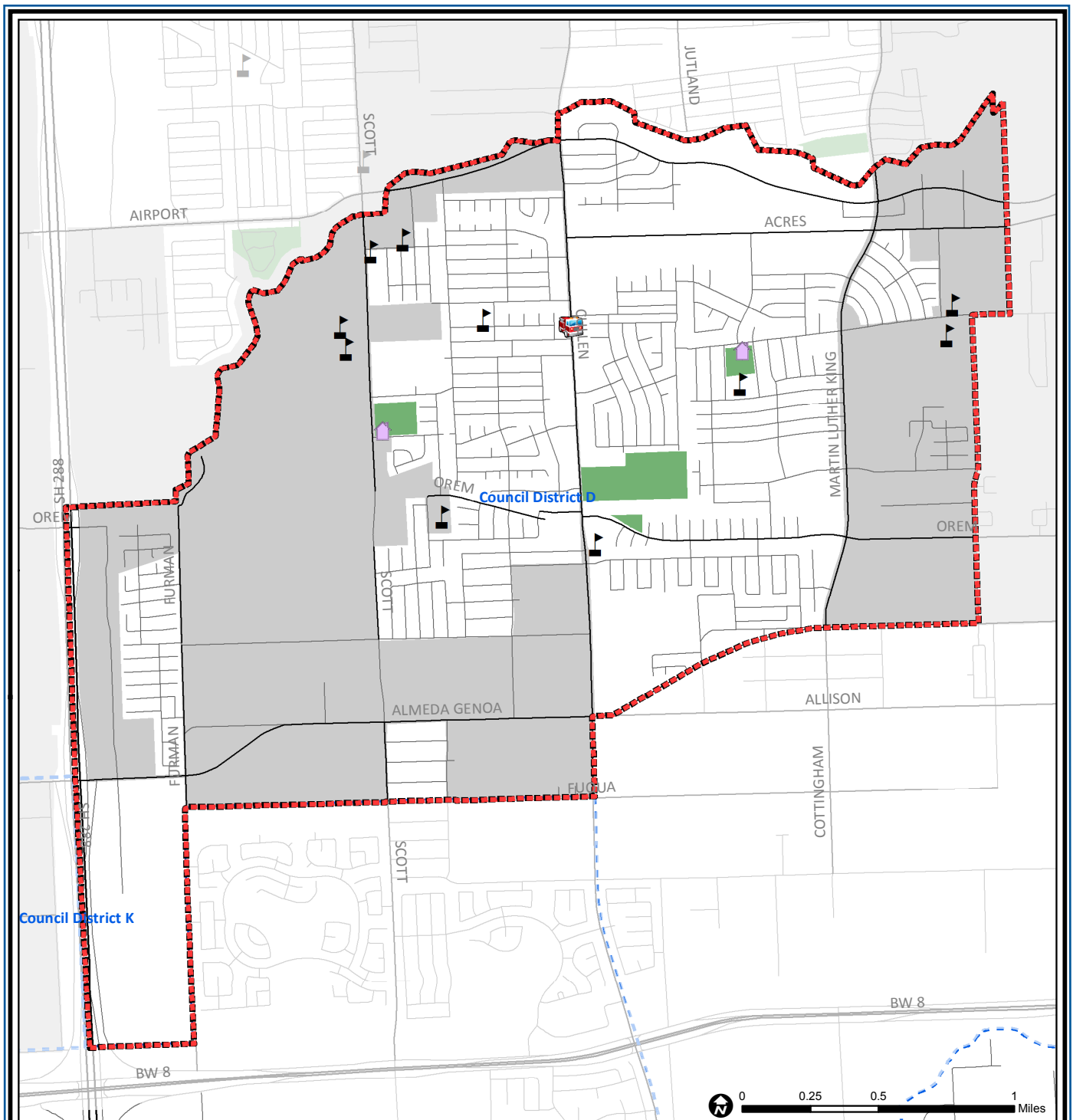
Source: City of Houston GIS Database,
Harris County Appraisal District

Date: November 16, 2017

This map is made available for reference purposes only and should not be substituted for a survey product. The City of Houston will not accept liability of any kind in conjunction with its use.



**PLANNING &
DEVELOPMENT
DEPARTMENT**



South Acres / Crestmont Park: Public Facilities

Source: City of Houston GIS Database

Date: October 2017

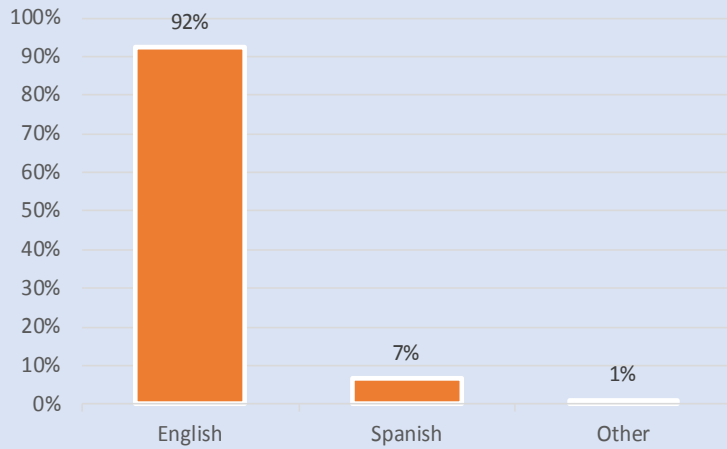
This map is made available for reference purposes only and should not be substituted for a survey product. The City of Houston will not accept liability of any kind in conjunction with its use.

- | | | |
|-----------------------------|-------------------------|---------------------|
| Super Neighborhood Boundary | Airports | Rail Road |
| Community Centers | Harris County Hospitals | Metro Rail Stations |
| Fire Station | Private Hospitals | Metro Rail Line |
| Police Station | Other Health Facilities | Parks |
| School | Library | TIRZ |

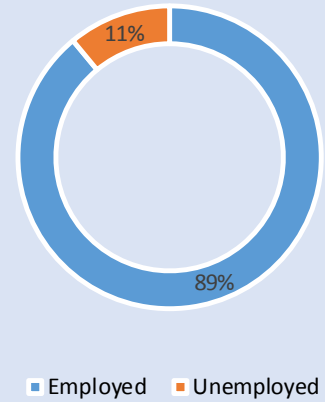


**PLANNING &
DEVELOPMENT
DEPARTMENT**

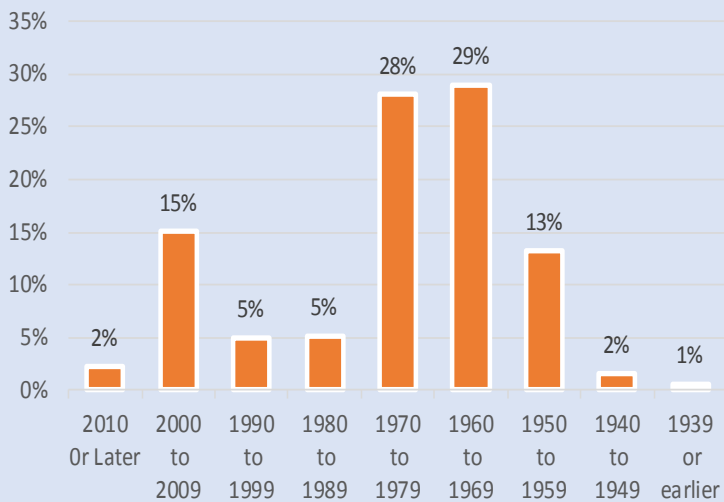
Language Spoken at Home



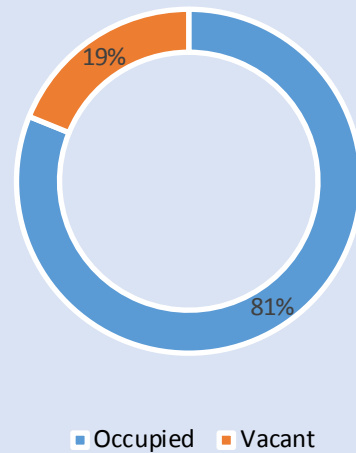
Employment Status



Housing Units by Year Built



Housing Occupancy



Source: U.S. Census Bureau, 2000
American Community Survey, 2011-2015 Estimates



**PLANNING &
DEVELOPMENT
DEPARTMENT**