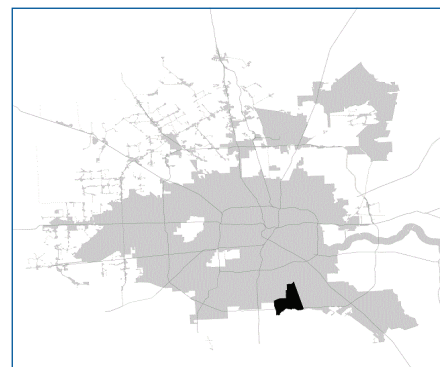


SUPER

Neighborhood

RESOURCE ASSESSMENT



	Super Neighborhood		Houston	
Pop. characteristics	2000	2015	2000	2015
Total population	2,245	6,303	1,953,631	2,217,706
Persons per sq. mile	268	752	3,166	3,314
Age of Population				
Under 5 years	9%	10%	8%	8%
5- 17 years	25%	25%	19%	17%
18- 64 years	58%	58%	64%	65%
65 and over	7%	7%	9%	10%
Ethnicity				
Non Hispanic Whites	19%	6%	31%	26%
Non Hispanic Blacks	43%	36%	25%	22%
Hispanics	35%	56%	37%	44%
Non Hispanic Asians	2%	1%	6%	7%
Non Hispanic Others	1%	1%	1%	1%
Income				
Under \$25,000	47%	21%	33%	27%
\$25,001 to \$50,000	27%	26%	31%	25%
\$50,001 to \$100,000	22%	33%	24%	26%
Over \$100,001	4%	20%	12%	22%
Median Household Income	\$28,190	\$45,109	\$36,616	\$46,187
Educational Status				
No Diploma	40%	29%	30%	23%
High School Diploma	35%	28%	20%	23%
Some College	16%	33%	23%	24%
Bachelor's or Higher	9%	11%	27%	31%
Housing and Households				
Total housing units	835	1,890	782,378	909,336
Occupied	90%	88%	92%	88%
Vacant	10%	12%	8%	12%
Total households	751	1,659	717,945	799,714
Family households	537	1,252	457,549	491,778
Median Housing Value	\$43,316	\$86,764	\$79,300	\$131,700

Description

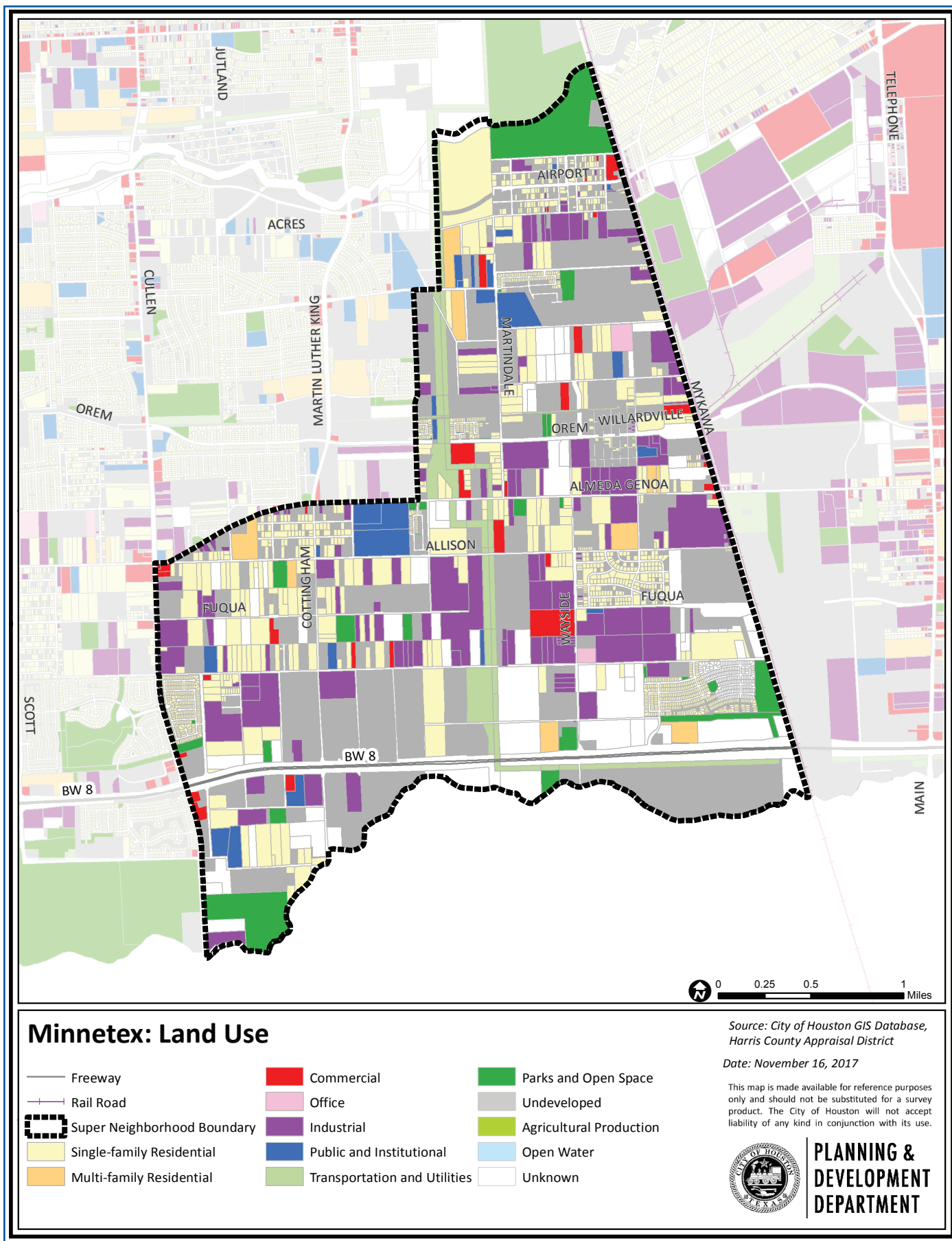
Minnetex is an isolated, semi-rural area in south central Houston which experienced very little development. The scattered homes, small large-lot subdivisions and occasional industrial facility are surrounded by acres of raw land which now has quick access to the rest of the metropolitan area. For now impediments to new growth are the lack of water and sewer lines, and possibly noise resulting from the community's location in an approach path for Hobby Airport.

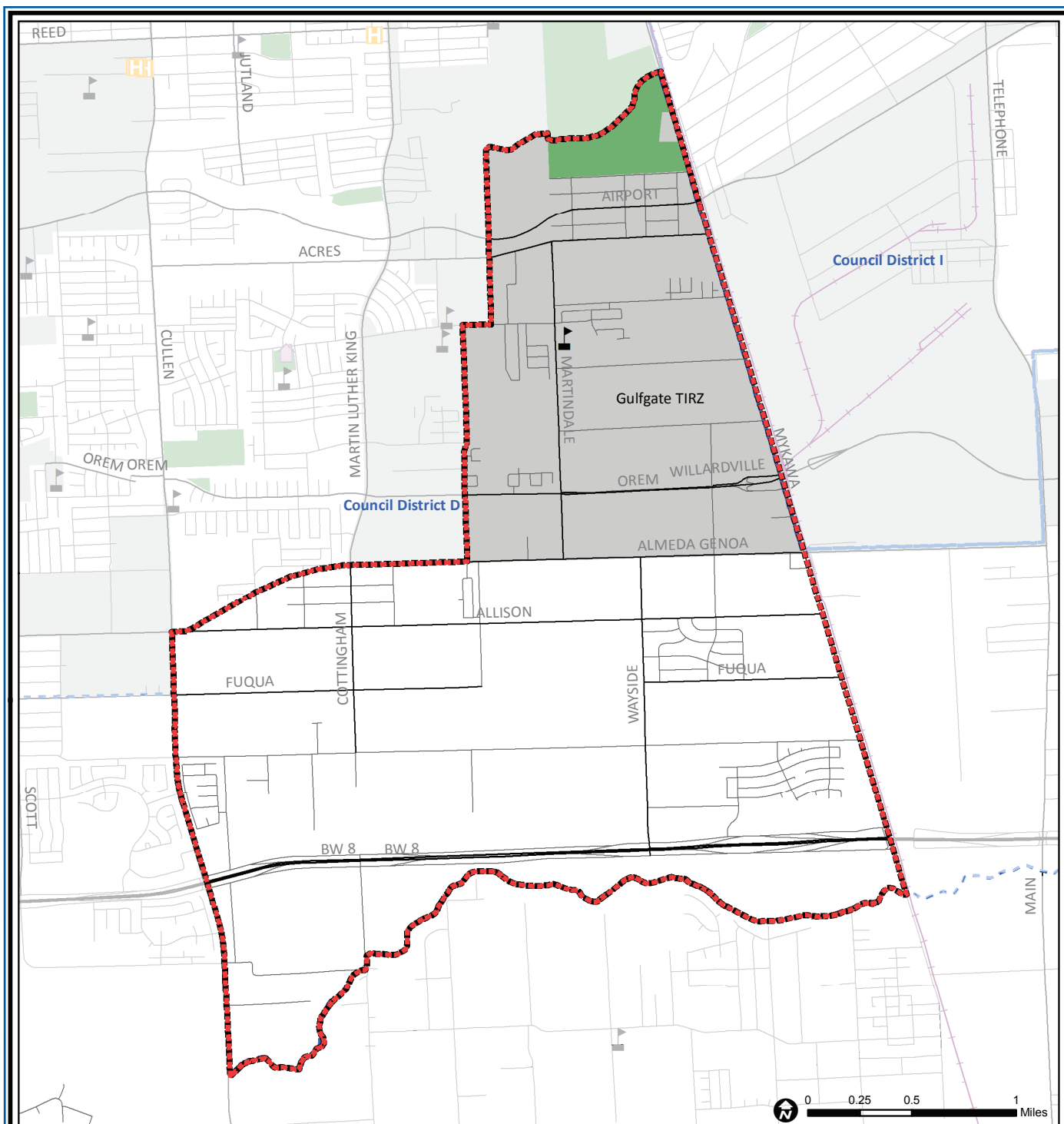
Highlights

- ✓ Houston City Council District D
- ✓ Houston Independent School District
- ✓ Pearland Independent School District
- ✓ 3 Police beats (includes bordering beats)
- ✓ 5,360 acres (8.38 sq. miles)



**PLANNING &
DEVELOPMENT
DEPARTMENT**





Minnetex: Public Facilities

Super Neighborhood Boundary

Community Centers

Fire Station

Police Station

School

Airports

Harris County Hospitals

Private Hospitals

Other Health Facilities

Library

Rail Road

Metro Rail Stations

Metro Rail Line

Parks

TIRZ

Source: City of Houston GIS Database

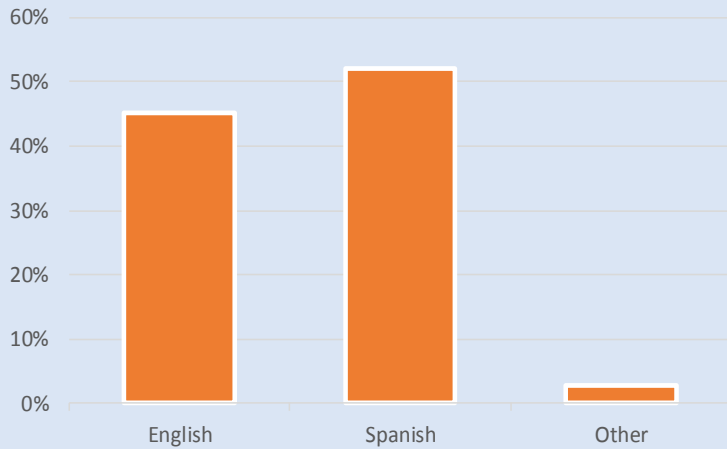
Date: October 2017

This map is made available for reference purposes only and should not be substituted for a survey product. The City of Houston will not accept liability of any kind in conjunction with its use.

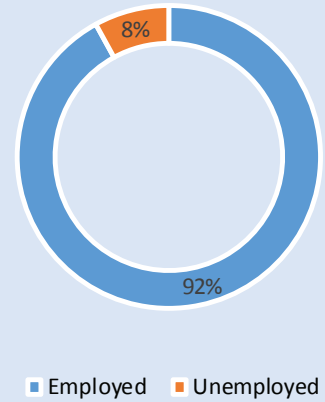


**PLANNING &
DEVELOPMENT
DEPARTMENT**

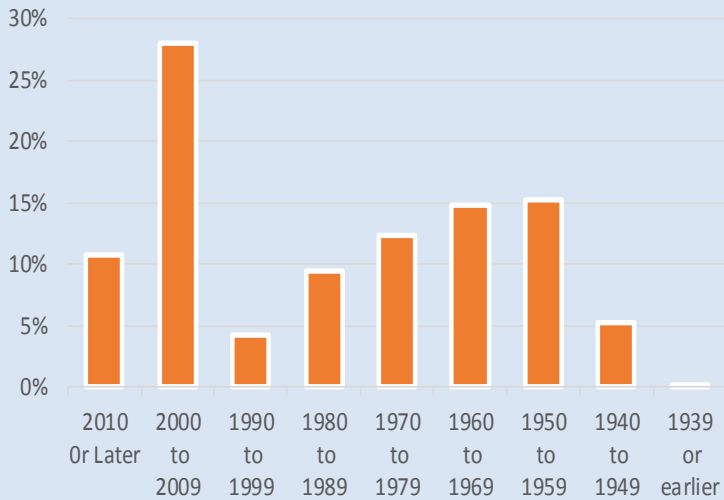
Language Spoken at Home



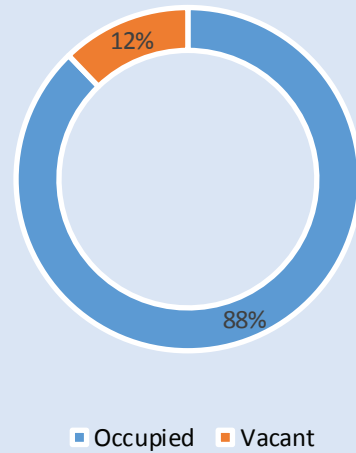
Employment Status



Housing Units by Year Built



Housing Occupancy



Source: U.S. Census Bureau, 2000
American Community Survey, 2011-2015 Estimates



**PLANNING &
DEVELOPMENT
DEPARTMENT**