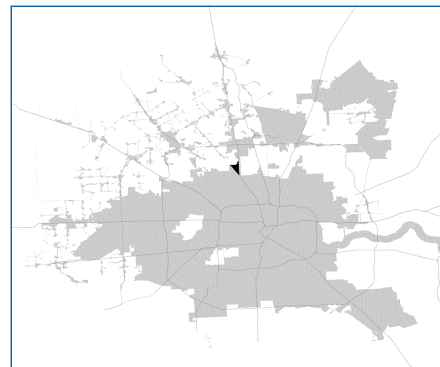


# SUPER

## Neighborhood

### RESOURCE ASSESSMENT



	Super Neighborhood		Houston	
Pop. characteristics	2000	2015	2000	2015
Total population	3,891	3,569	1,953,631	2,217,706
Persons per sq. mile	4,422	4,055	3,166	3,314
<b>Age of Population</b>				
Under 5 years	6%	5%	8%	8%
5- 17 years	20%	21%	19%	17%
18- 64 years	63%	60%	64%	65%
65 and over	11%	14%	9%	10%
<b>Ethnicity</b>				
Non Hispanic Whites	30%	17%	31%	26%
Non Hispanic Blacks	18%	15%	25%	22%
Hispanics	45%	65%	37%	44%
Non Hispanic Asians	6%	3%	6%	7%
Non Hispanic Others	1%	0%	1%	1%
<b>Income</b>				
Under \$25,000	21%	26%	33%	27%
\$25,001 to \$50,000	34%	29%	31%	25%
\$50,001 to \$100,000	35%	39%	24%	26%
Over \$100,001	10%	6%	12%	22%
<b>Median Household Income</b>	\$44,649	\$34,452	\$36,616	\$46,187
<b>Educational Status</b>				
No Diploma	34%	33%	30%	23%
High School Diploma	28%	36%	20%	23%
Some College	25%	20%	23%	24%
Bachelor's or Higher	13%	11%	27%	31%
<b>Housing and Households</b>				
Total housing units	1,275	1,147	782,378	909,336
Occupied	98%	98%	92%	88%
Vacant	2%	2%	8%	12%
Total households	1,244	1,126	717,945	799,714
Family households	1,011	938	457,549	491,778
Median Housing Value	\$68,184	\$87,584	\$79,300	\$131,700

### Description

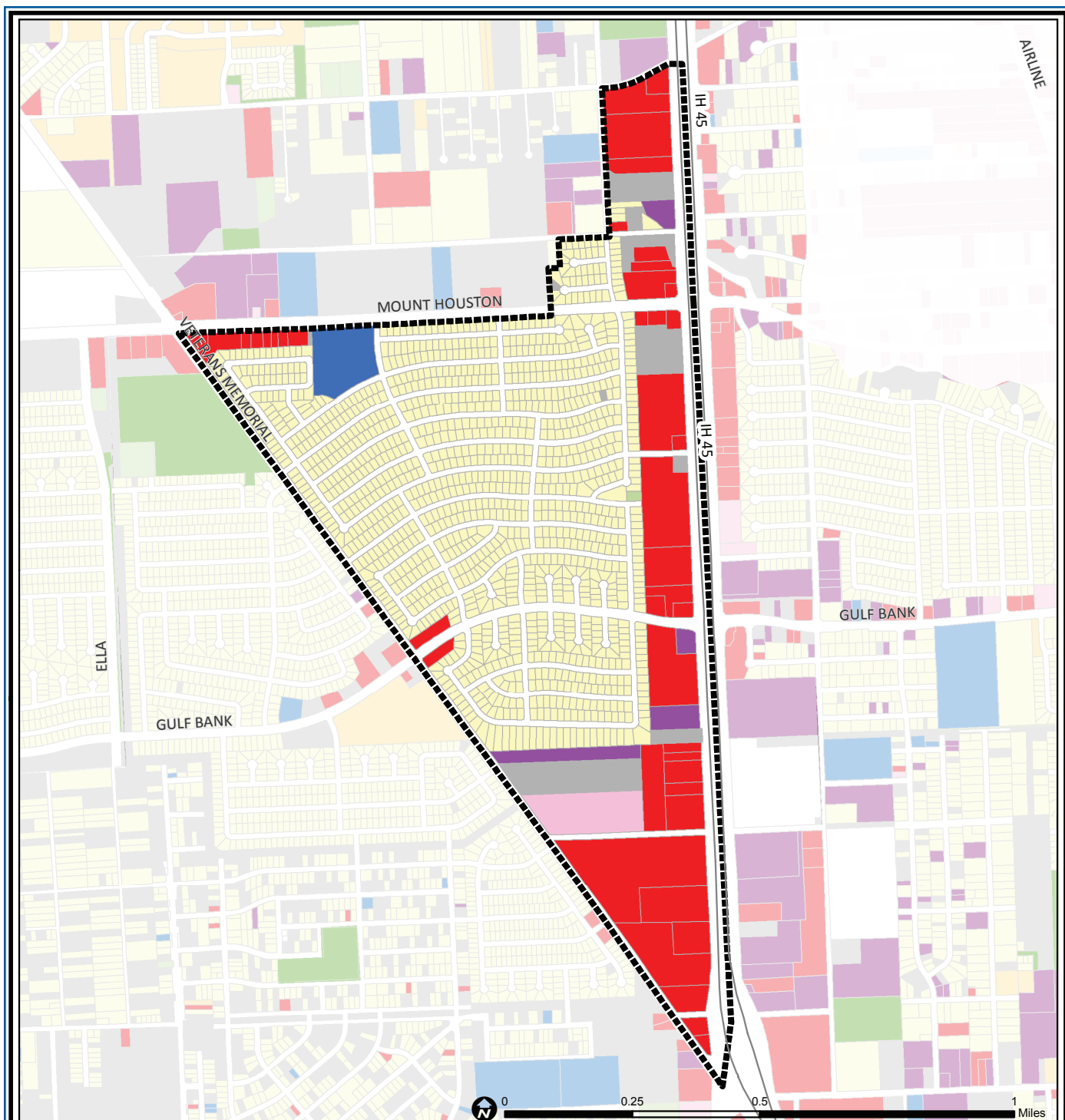
Hidden Valley is a neighborhood in north Houston, a triangle formed by the North Freeway, Veterans Memorial Highway, and West Mount Houston Road. This area is located between heavily wooded areas to the north and south. It is characterized by tract homes separated from the freeway edge by a row of large auto dealerships.

### Highlights

- ✓ Houston City Council Districts B & H
- ✓ Houston Independent School District
- ✓ Aldine Independent School District
- ✓ 1 Police beat (includes bordering beats)
- ✓ 563 acres (0.88 sq. miles)



**PLANNING &  
DEVELOPMENT  
DEPARTMENT**



## Hidden Valley: Land Use

Freeway	Commercial	Parks and Open Space
Rail Road	Office	Undeveloped
Super Neighborhood Boundary	Industrial	Agricultural Production
Single-family Residential	Public and Institutional	Open Water
Multi-family Residential	Transportation and Utilities	Unknown

Source: City of Houston GIS Database,  
Harris County Appraisal District

Date: November 13, 2017

This map is made available for reference purposes only and should not be substituted for a survey product. The City of Houston will not accept liability of any kind in conjunction with its use.



**PLANNING &  
DEVELOPMENT  
DEPARTMENT**



## Hidden Valley: Public Facilities

	Super Neighborhood Boundary		Airports		Rail Road
	Community Centers		Harris County Hospitals		Metro Rail Stations
	Fire Station		Private Hospitals		Metro Rail Line
	Police Station		Other Health Facilities		Parks
	School		Library		TIRZ

Source: City of Houston GIS Database

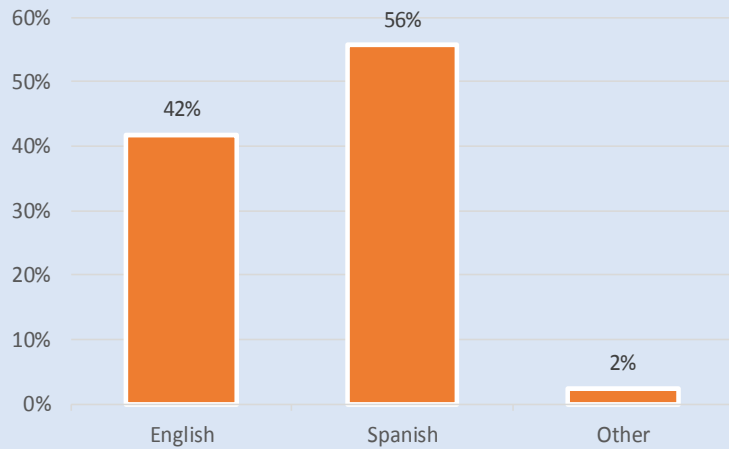
Date: October 2017

This map is made available for reference purposes only and should not be substituted for a survey product. The City of Houston will not accept liability of any kind in conjunction with its use.

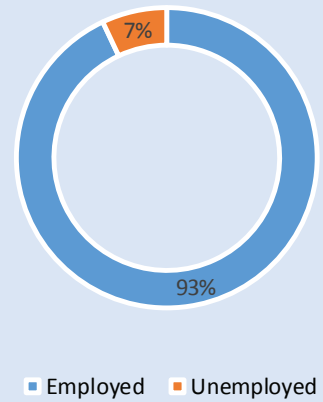


**PLANNING &  
DEVELOPMENT  
DEPARTMENT**

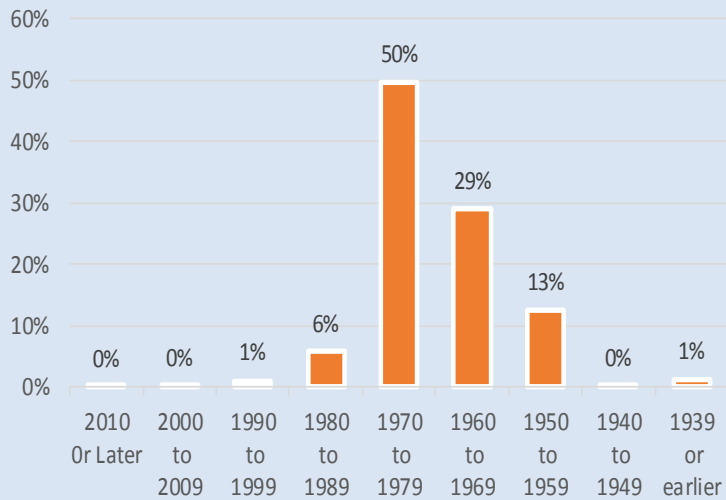
### Language Spoken at Home



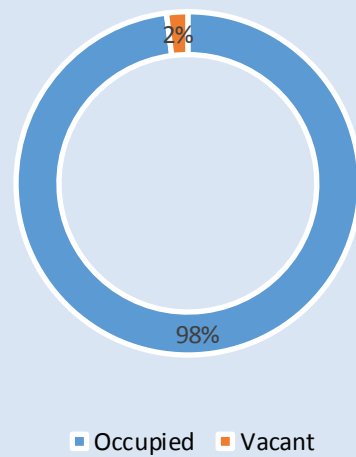
### Employment Status



### Housing Units by Year Built



### Housing Occupancy



Source: U.S. Census Bureau, 2000  
American Community Survey, 2011-2015 Estimates



**PLANNING &  
DEVELOPMENT  
DEPARTMENT**