

SUPER

Neighborhood

RESOURCE ASSESSMENT



	Super Neighborhood		Houston	
Pop. characteristics	2000	2015	2000	2015
Total population	21,302	16,999	1,953,631	2,217,706
Persons per sq. mile	8,420	6,720	3,166	3,314
Age of Population				
Under 5 years	10%	6%	8%	8%
5- 17 years	23%	23%	19%	17%
18- 64 years	59%	61%	64%	65%
65 and over	8%	10%	9%	10%
Ethnicity				
Non Hispanic Whites	3%	3%	31%	26%
Non Hispanic Blacks	1%	1%	25%	22%
Hispanics	96%	95%	37%	44%
Non Hispanic Asians	0%	0%	6%	7%
Non Hispanic Others	0%	0%	1%	1%
Income				
Under \$25,000	52%	43%	33%	27%
\$25,001 to \$50,000	33%	30%	31%	25%
\$50,001 to \$100,000	13%	23%	24%	26%
Over \$100,001	2%	4%	12%	22%
Median Household Income	\$14,875	\$32,039	\$36,616	\$46,187
Educational Status				
No Diploma	71%	55%	30%	23%
High School Diploma	18%	25%	20%	23%
Some College	8%	16%	23%	24%
Bachelor's or Higher	2%	4%	27%	31%
Housing and Households				
Total housing units	6,430	6,221	782,378	909,336
Occupied	91%	79%	92%	88%
Vacant	9%	21%	8%	12%
Total households	5,860	4,932	717,945	799,714
Family households	4,650	3,759	457,549	491,778
Median Housing Value	\$24,915	\$77,381	\$79,300	\$131,700

Description

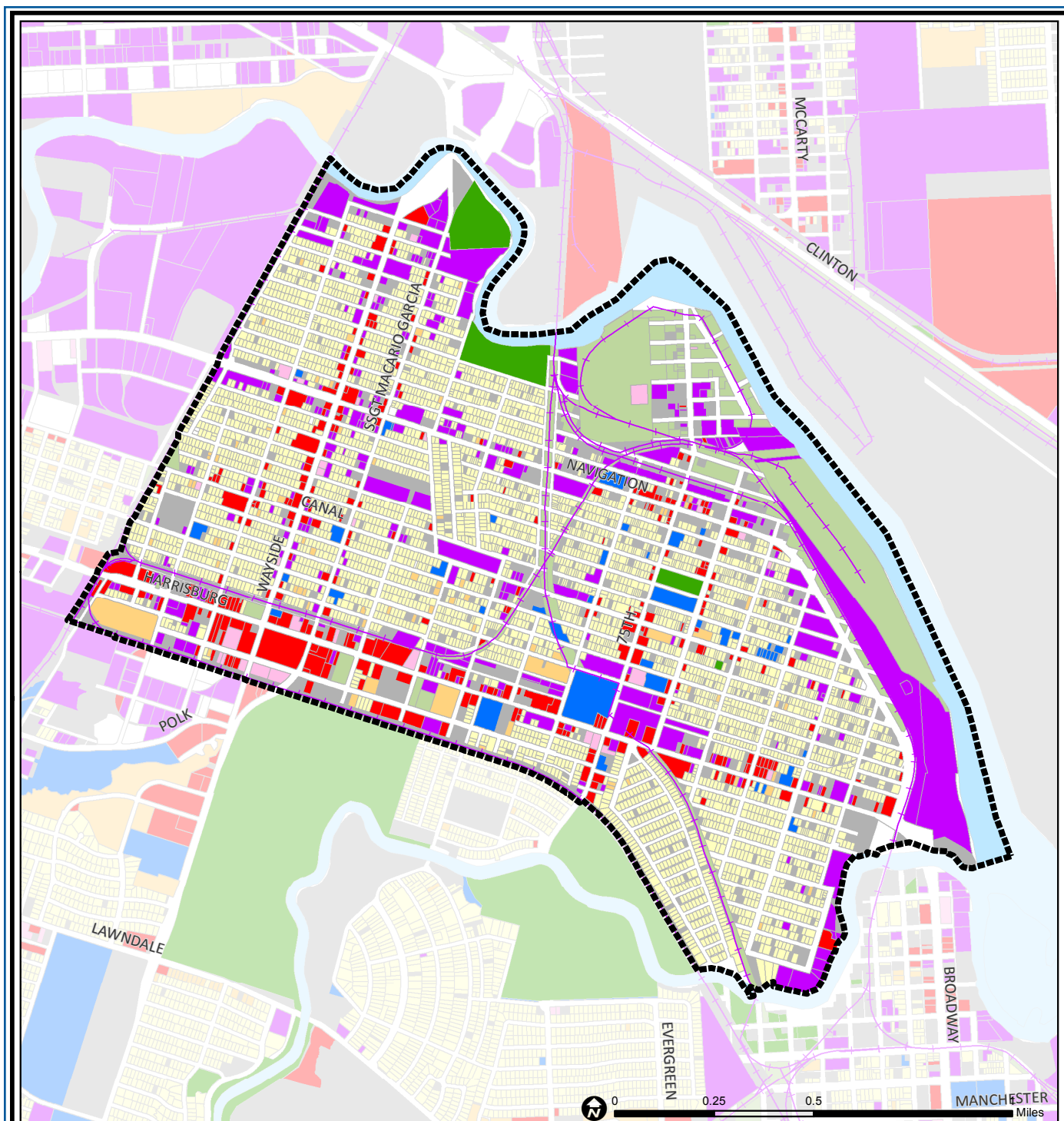
Magnolia Park borders the Houston Ship Channel just south of the Turning Basin, the location of some of the first wharves built when Houston became a deep water port in 1913. The community thrived as a home for workers on the docks and in industries lining the channel. For a time it was even an incorporated municipality. As early as the 1930s, Magnolia Park was developing an identity as a center of Houston's Hispanic community. This continues, especially around recently revived commercial areas near Harrisburg and Wayside.

Highlights

- ✓ Houston City Council District I
- ✓ Houston Independent School District
- ✓ 4 Police beats (includes bordering beats)
- ✓ 1,619 acres (2.53 sq. miles)



**PLANNING &
DEVELOPMENT
DEPARTMENT**



Magnolia Park: Land Use

	Freeway		Commercial		Parks and Open Space
	Rail Road		Office		Undeveloped
	Super Neighborhood Boundary		Industrial		Agricultural Production
	Single-family Residential		Public and Institutional		Open Water
	Multi-family Residential		Transportation and Utilities		Unknown

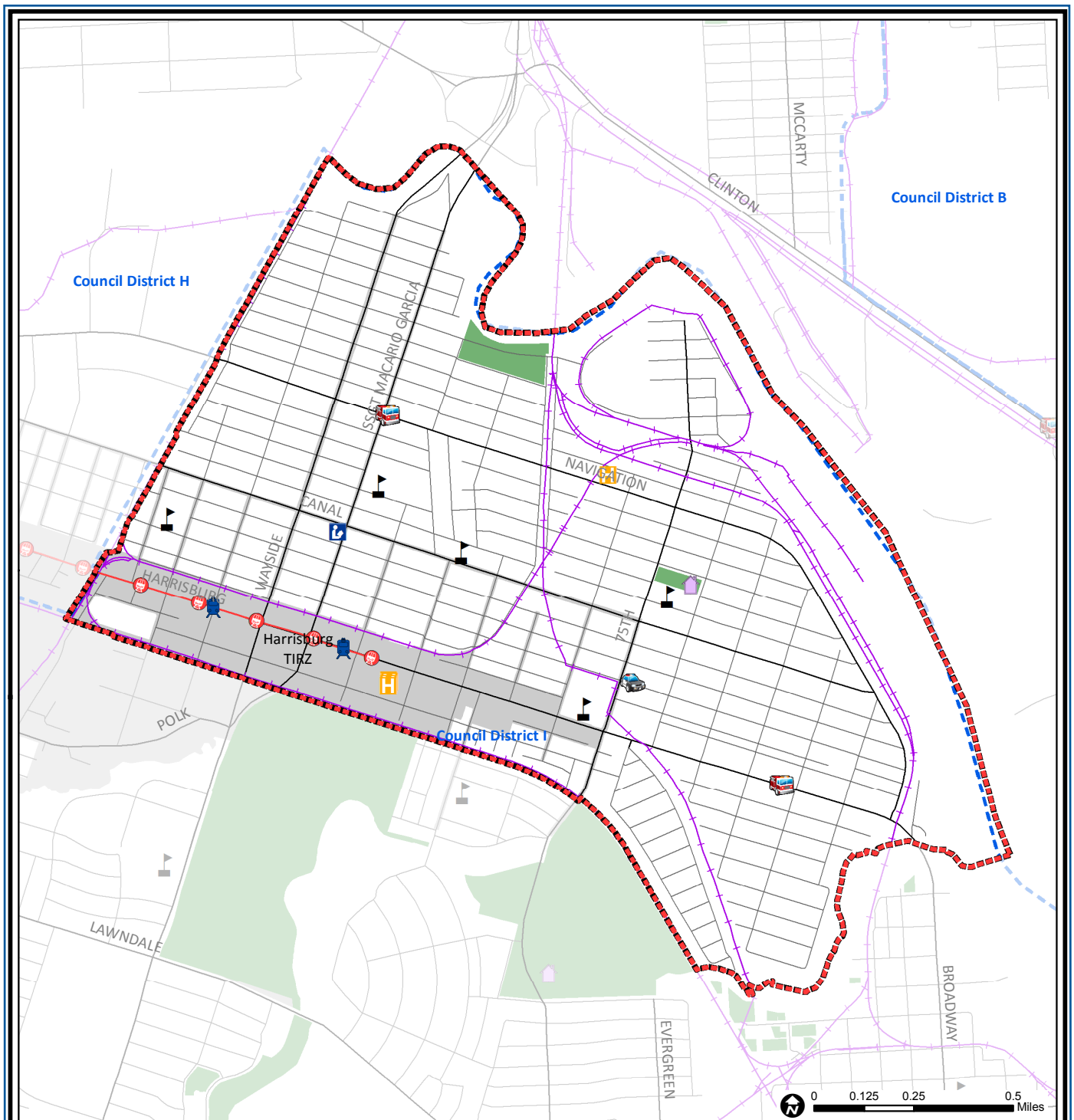
Source: City of Houston GIS Database,
Harris County Appraisal District

Date: November 16, 2017

This map is made available for reference purposes only and should not be substituted for a survey product. The City of Houston will not accept liability of any kind in conjunction with its use.



**PLANNING &
DEVELOPMENT
DEPARTMENT**



Magnolia Park: Public Facilities

	Super Neighborhood Boundary		Airports		Rail Road
	Community Centers		Harris County Hospitals		Metro Rail Stations
	Fire Station		Private Hospitals		Metro Rail Line
	Police Station		Other Health Facilities		Parks
	School		Library		TIRZ

Source: City of Houston GIS Database

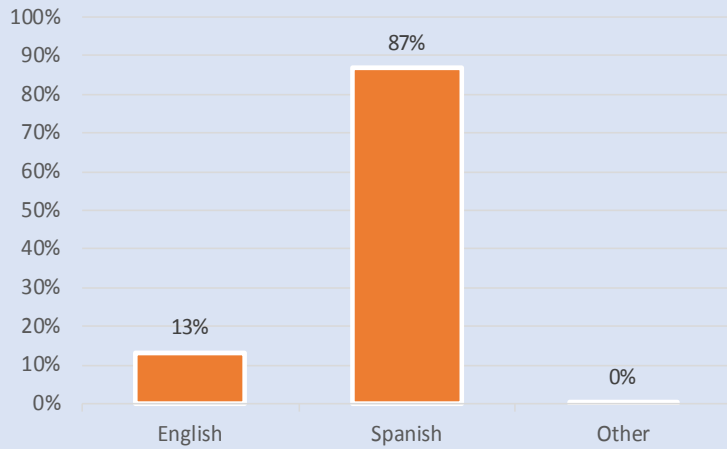
Date: October 2017

This map is made available for reference purposes only and should not be substituted for a survey product. The City of Houston will not accept liability of any kind in conjunction with its use.

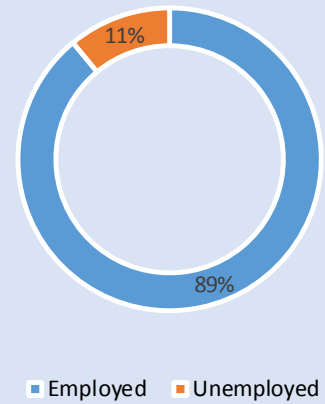


**PLANNING &
DEVELOPMENT
DEPARTMENT**

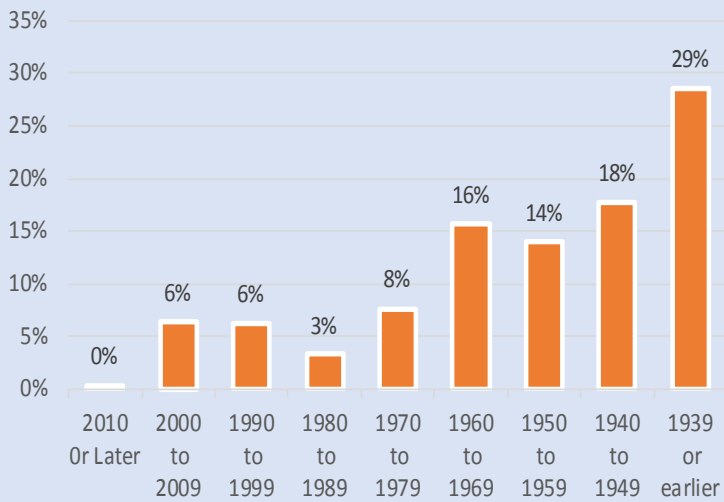
Language Spoken at Home



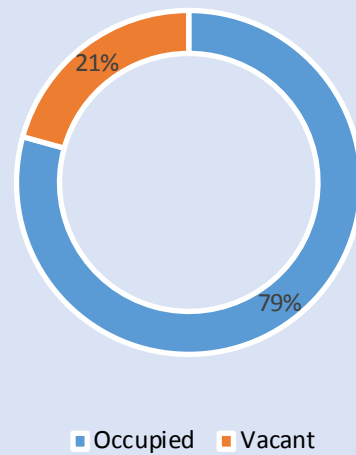
Employment Status



Housing Units by Year Built



Housing Occupancy



Source: U.S. Census Bureau, 2000
American Community Survey, 2011-2015 Estimates



**PLANNING &
DEVELOPMENT
DEPARTMENT**