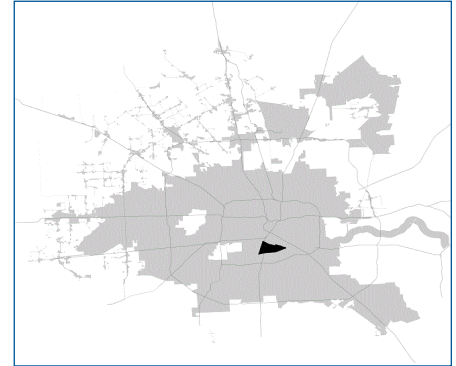


# SUPER

## Neighborhood

### RESOURCE ASSESSMENT



	Super Neighborhood		Houston	
Pop. characteristics	2000	2015	2000	2015
Total population	13,997	18,459	1,953,631	2,217,706
Persons per sq. mile	4,153	5,475	3,166	3,314
<b>Age of Population</b>				
Under 5 years	6%	4%	8%	8%
5- 17 years	16%	8%	19%	17%
18- 64 years	60%	76%	64%	65%
65 and over	19%	11%	9%	10%
<b>Ethnicity</b>				
Non Hispanic Whites	9%	21%	31%	26%
Non Hispanic Blacks	80%	59%	25%	22%
Hispanics	5%	9%	37%	44%
Non Hispanic Asians	4%	8%	6%	7%
Non Hispanic Others	2%	3%	1%	1%
<b>Income</b>				
Under \$25,000	41%	35%	33%	27%
\$25,001 to \$50,000	26%	19%	31%	25%
\$50,001 to \$100,000	23%	21%	24%	26%
Over \$100,001	10%	24%	12%	22%
<b>Median Household Income</b>	\$39,615	\$63,118	\$36,616	\$46,187
<b>Educational Status</b>				
No Diploma	16%	8%	30%	23%
High School Diploma	18%	15%	20%	23%
Some College	24%	30%	23%	24%
Bachelor's or Higher	43%	47%	27%	31%
<b>Housing and Households</b>				
Total housing units	6,721	8,150	782,378	909,336
Occupied	87%	80%	92%	88%
Vacant	13%	20%	8%	12%
Total households	5,859	6,492	717,945	799,714
Family households	3,215	2,862	457,549	491,778
Median Housing Value	\$122,720	\$251,900	\$79,300	\$131,700

### Description

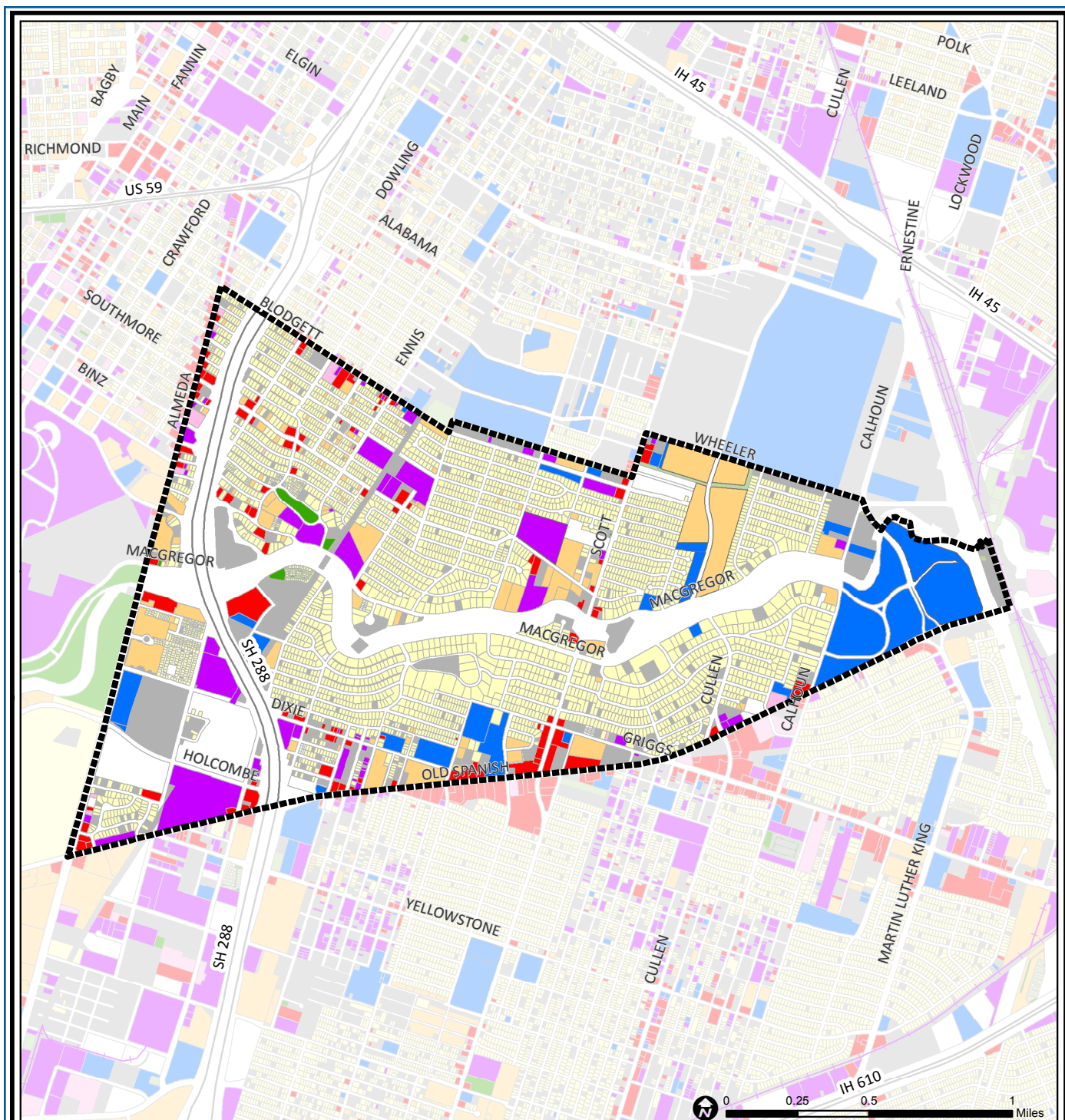
MacGregor is a collection of neighborhoods on both sides of Brays Bayou east of the Texas Medical Center. The area became home to many of Houston's African-American professionals during the 1950s and 1960s. At that time some large homes were demolished or converted to commercial uses. As a result some parts of the community include stately homes interspersed with small motels and deteriorated apartments. Some subdivisions, notably Timbercrest, University Oaks and Riverside Terrace along South MacGregor, retain their gracious residential characteristics and contain numerous examples of outstanding architecture.

### Highlights

- ✓ Houston City Council District D
- ✓ Houston Independent School District
- ✓ 5 Police beats (includes bordering beats)
- ✓ 2,157 acres (3.37 sq. miles)



**PLANNING &  
DEVELOPMENT  
DEPARTMENT**



## MacGregor: Land Use

	Freeway		Commercial		Parks and Open Space
	Rail Road		Office		Undeveloped
	Super Neighborhood Boundary		Industrial		Agricultural Production
	Single-family Residential		Public and Institutional		Open Water
	Multi-family Residential		Transportation and Utilities		Unknown

Source: City of Houston GIS Database,  
Harris County Appraisal District

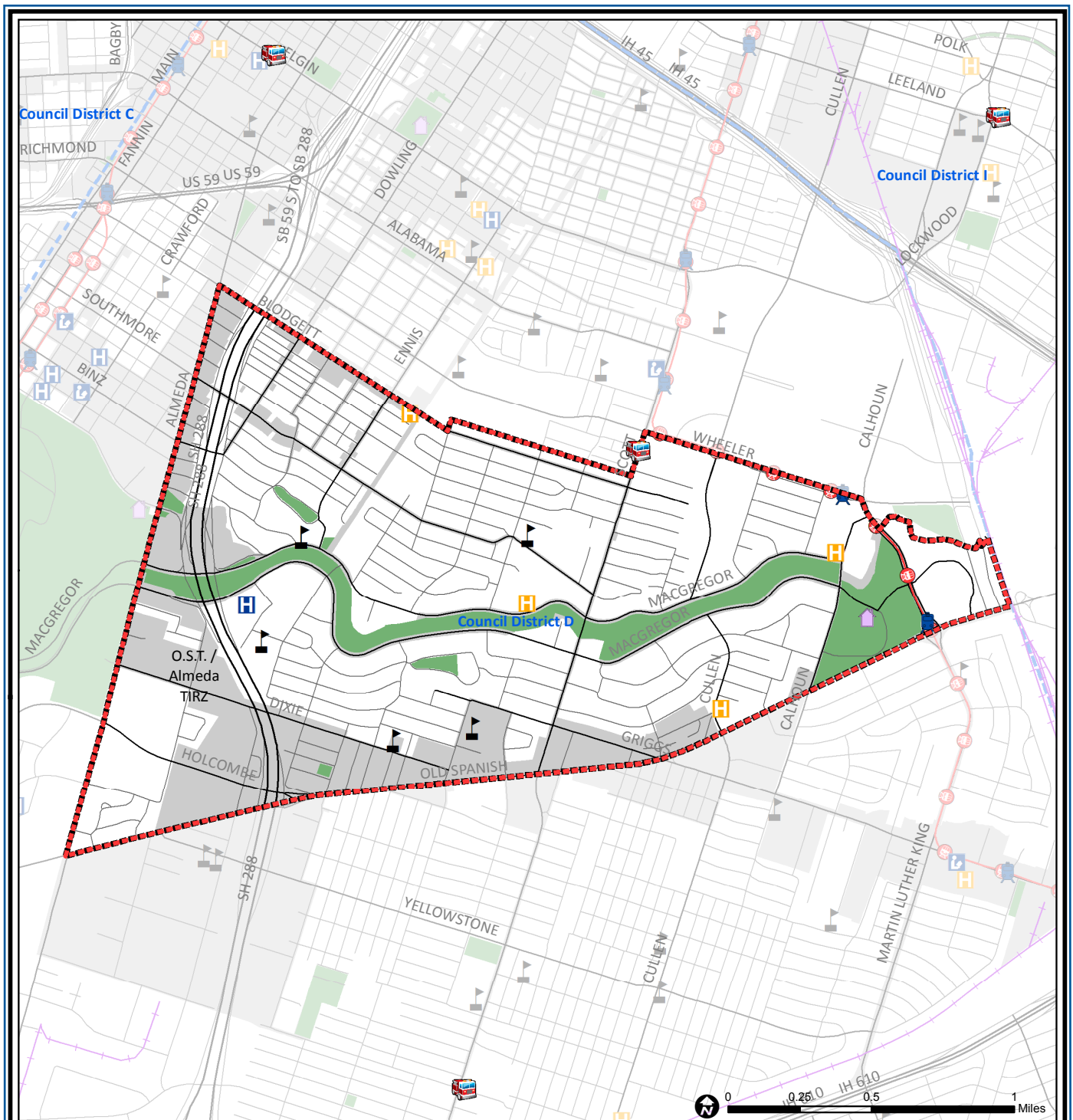
Date: November 16, 2017

This map is made available for reference purposes only and should not be substituted for a survey product. The City of Houston will not accept liability of any kind in conjunction with its use.



**PLANNING &  
DEVELOPMENT  
DEPARTMENT**





## Macgregor: Public Facilities

	Super Neighborhood Boundary		Airports		Rail Road
	Community Centers		Harris County Hospitals		Metro Rail Stations
	Fire Station		Private Hospitals		Metro Rail Line
	Police Station		Other Health Facilities		Parks
	School		Library		TIRZ

Source: City of Houston GIS Database

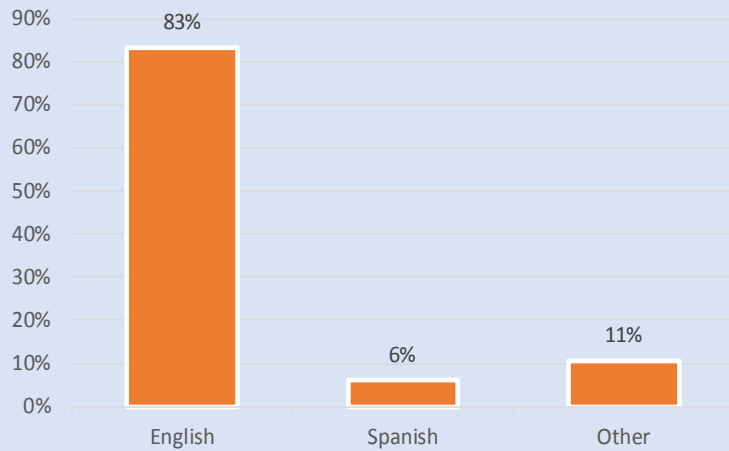
Date: October 2017

This map is made available for reference purposes only and should not be substituted for a survey product. The City of Houston will not accept liability of any kind in conjunction with its use.

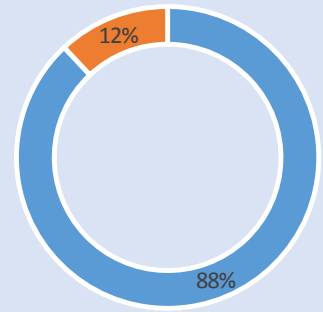


**PLANNING &  
DEVELOPMENT  
DEPARTMENT**

### Language Spoken at Home

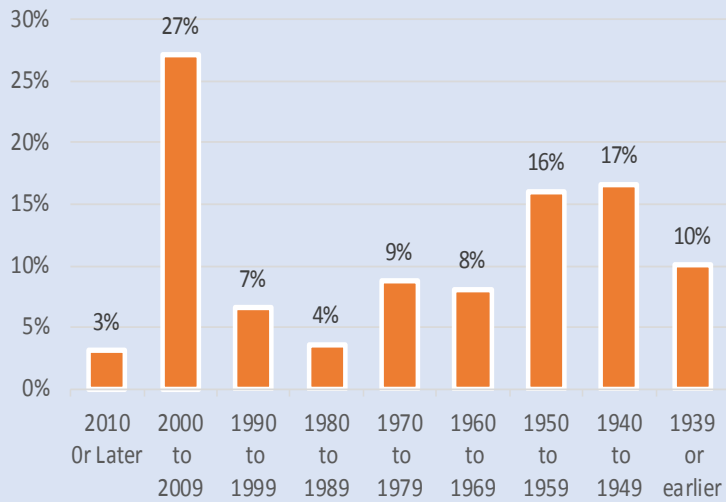


### Employment Status

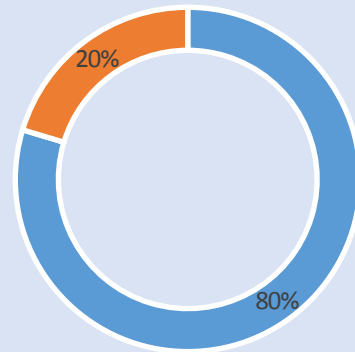


■ Employed ■ Unemployed

### Housing Units by Year Built



### Housing Occupancy



■ Occupied ■ Vacant

Source: U.S. Census Bureau, 2000  
American Community Survey, 2011-2015 Estimates



**PLANNING &  
DEVELOPMENT  
DEPARTMENT**