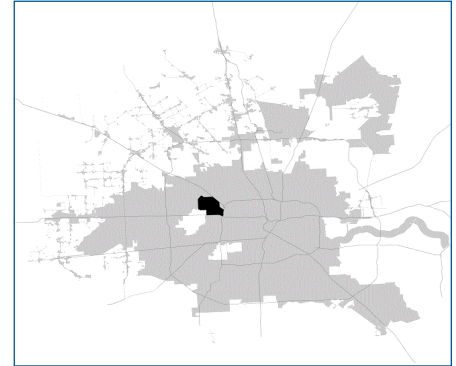


SUPER

Neighborhood

RESOURCE ASSESSMENT



	Super Neighborhood		Houston	
Pop. characteristics	2000	2015	2000	2015
Total population	26,491	26,877	1,953,631	2,217,706
Persons per sq. mile	4,336	4,397	3,166	3,314
Age of Population				
Under 5 years	10%	9%	8%	8%
5- 17 years	20%	21%	19%	17%
18- 64 years	62%	60%	64%	65%
65 and over	8%	10%	9%	10%
Ethnicity				
Non Hispanic Whites	30%	28%	31%	26%
Non Hispanic Blacks	4%	3%	25%	22%
Hispanics	61%	62%	37%	44%
Non Hispanic Asians	4%	5%	6%	7%
Non Hispanic Others	1%	2%	1%	1%
Income				
Under \$25,000	37%	32%	33%	27%
\$25,001 to \$50,000	33%	29%	31%	25%
\$50,001 to \$100,000	22%	19%	24%	26%
Over \$100,001	8%	21%	12%	22%
Median Household Income	\$32,733	\$65,467	\$36,616	\$46,187
Educational Status				
No Diploma	46%	34%	30%	23%
High School Diploma	19%	23%	20%	23%
Some College	18%	17%	23%	24%
Bachelor's or Higher	16%	26%	27%	31%
Housing and Households				
Total housing units	8,541	10,233	782,378	909,336
Occupied	42%	89%	92%	88%
Vacant	9%	11%	8%	12%
Total households	1,500	9,117	717,945	799,714
Family households	5,864	5,856	457,549	491,778
Median Housing Value	\$85,729	\$238,851	\$79,300	\$131,700

Description

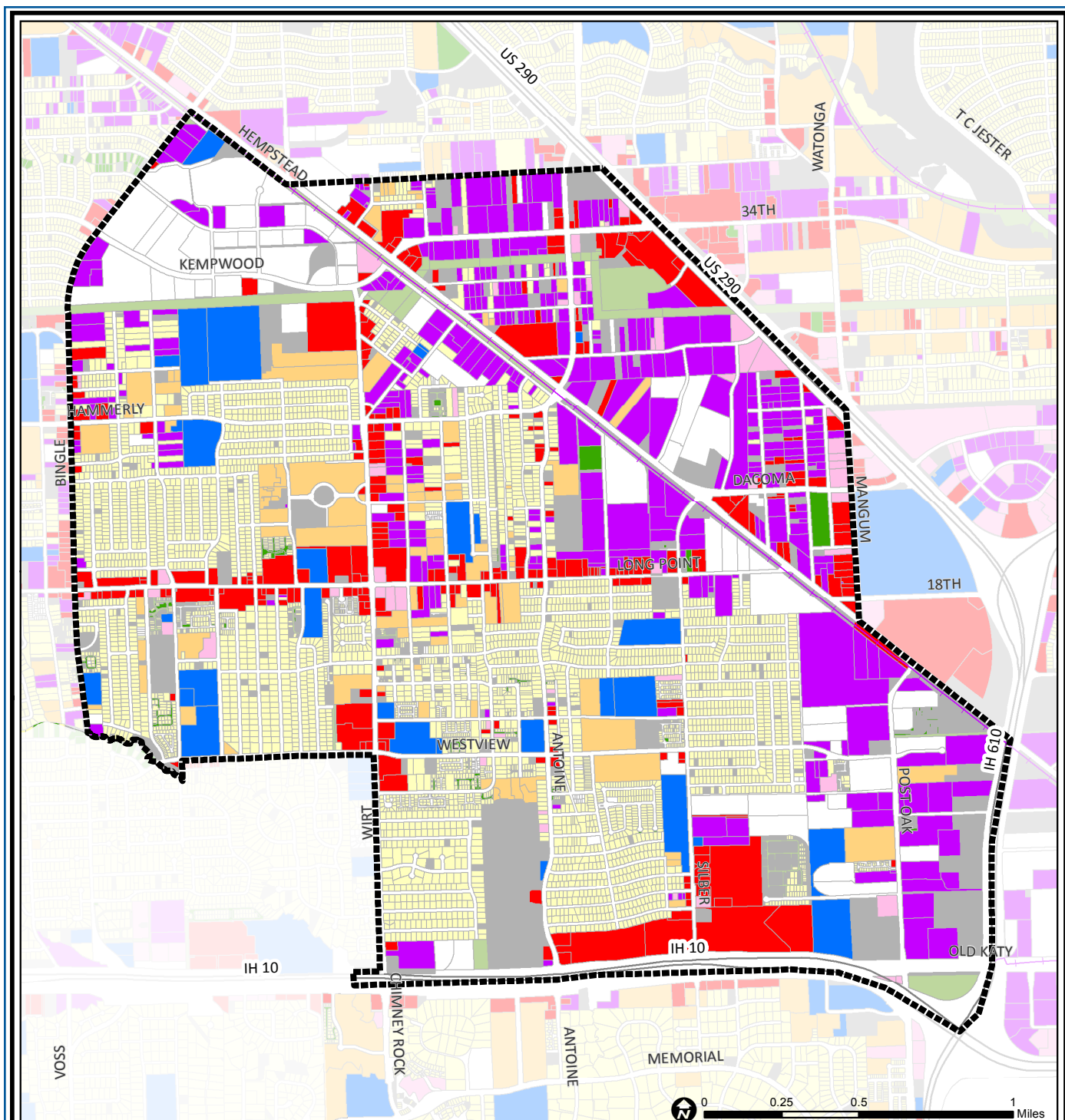
Spring Branch East, located east of Bingle, is the oldest part of the larger Spring Branch community. Many industrial and warehouse developments are found in the northern and eastern parts of the community near Hempstead Highway and US 290. The former site of the Cameron Iron Works on I-10, the community's southern boundary, is now being redeveloped as a retail and entertainment complex. New home construction is occurring near Wirt Road and in several gated subdivisions replacing deteriorated apartment complexes. Afton Village, Brykerwoods, Monarch Oaks, Ridgcrest, Hillendahl Acres, Long Point Oaks, Pine Terrace, and Westview Terrace are some of the other subdivisions in the area.

Highlights

- ✓ Houston City Council District A
- ✓ Houston Independent School District
- ✓ Spring Branch Independent School District
- ✓ 5 Police beats (includes bordering beats)
- ✓ 3,912 acres (6.11 sq. miles)



**PLANNING &
DEVELOPMENT
DEPARTMENT**



Spring Branch East: Land Use

Freeway	Commercial	Parks and Open Space
Rail Road	Office	Undeveloped
Super Neighborhood Boundary	Industrial	Agricultural Production
Single-family Residential	Public and Institutional	Open Water
Multi-family Residential	Transportation and Utilities	Unknown

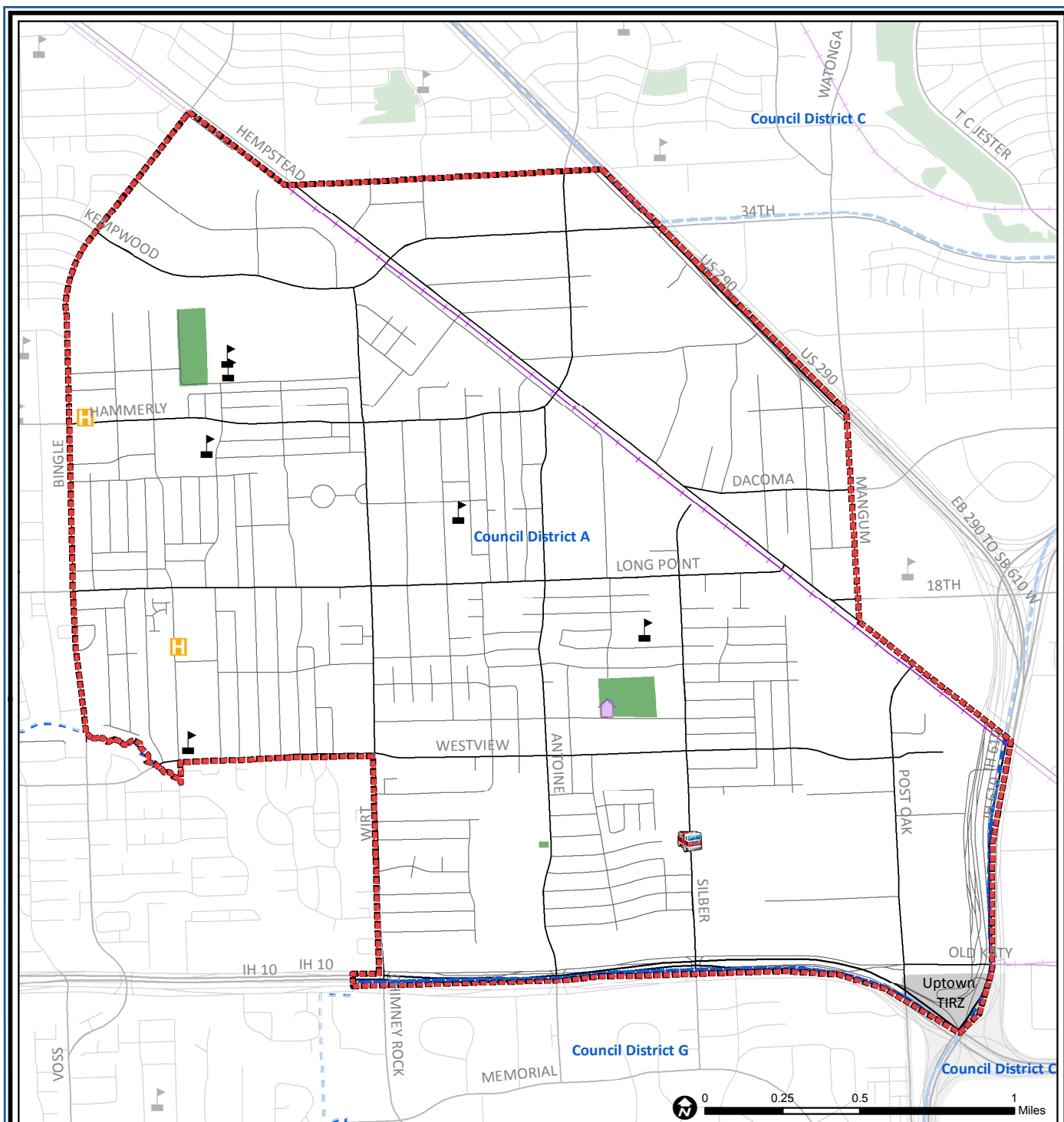
Source: City of Houston GIS Database,
Harris County Appraisal District

Date: November 16, 2017

This map is made available for reference purposes only and should not be substituted for a survey product. The City of Houston will not accept liability of any kind in conjunction with its use.



**PLANNING &
DEVELOPMENT
DEPARTMENT**



Spring Branch East: Public Facilities

Super Neighborhood Boundary

Community Centers

Fire Station

Police Station

School

Airports

Harris County Hospitals

Private Hospitals

Other Health Facilities

Library

Rail Road

Metro Rail Stations

Metro Rail Line

Parks

TIRZ

Source: City of Houston GIS Database

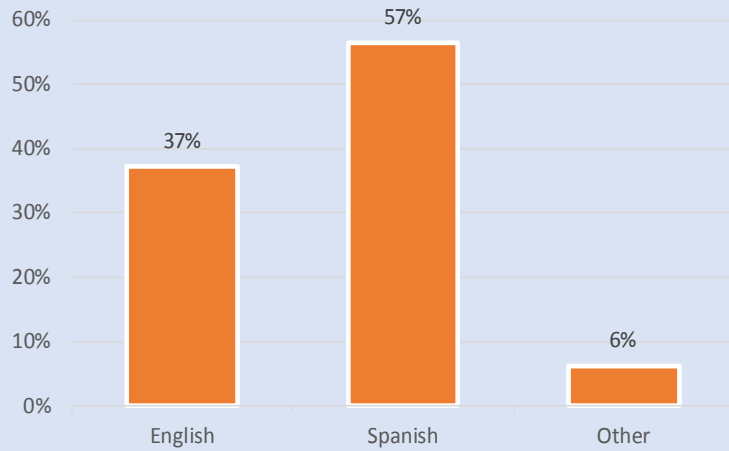
Date: December, 2017

This map is made available for reference purposes only and should not be substituted for a survey product. The City of Houston will not accept liability of any kind in conjunction with its use.

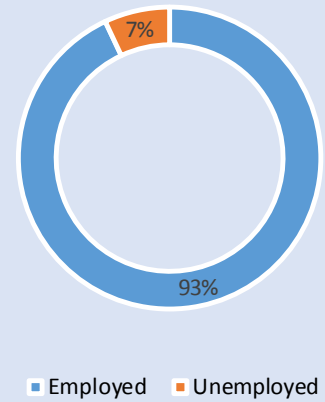


**PLANNING &
DEVELOPMENT
DEPARTMENT**

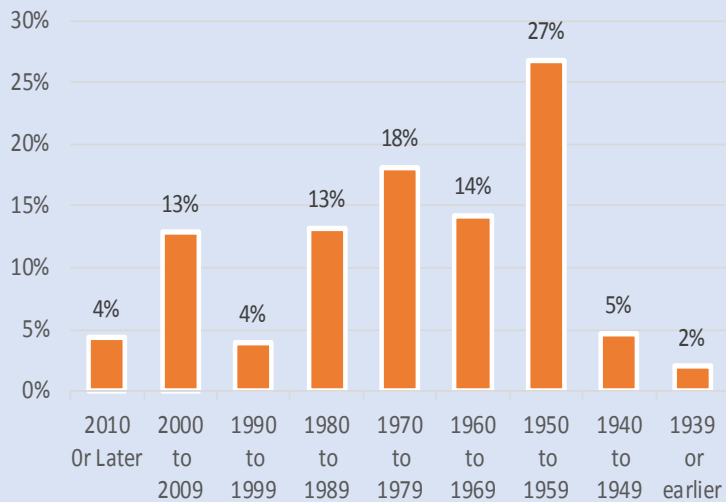
Language Spoken at Home



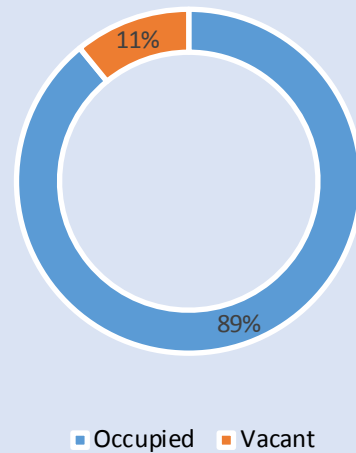
Employment Status



Housing Units by Year Built



Housing Occupancy



Source: U.S. Census Bureau, 2000
American Community Survey, 2011-2015 Estimates



**PLANNING &
DEVELOPMENT
DEPARTMENT**