

KICKOFF STEERING AND TECHNICAL COMMITTEE MEETING

Southeast Houston Mobility Plan

Date: Thursday, May 24, 2018

Time: 5:30pm-7:00pm

Meeting Location: Harbach-Ripley Neighborhood Center

ATTENDEES

Melissa Beeler, City of Houston

Paresh Lad, City of Houston

Wu Ying, City of Houston/PDD

Khang Nguyen, City of Houston/HPW/TDO

Sharon Moses-Burnside, City of Houston

Cheryl Mergo, H-GAC

Gusta Booker, District D, TIRZ 8

Anita Hollamn, COH/TDO

Charles U. Airiohuodion, TXDOT

Jonathan Brooks, Link Houston

Rodney Jones, TIRZ 26

Roxis McKinney, District D

Raul Diaz, Rev. Park Place CC

Tom Brents, Hobby Airport District

Don Huml, TIRZ 08

Mary Roberts, District D

Jennifer Ostlind, City of Houston

Amar Mohite, Harris County Precinct One

Chelbi Mims, One World Strategy Group

Priya Zachariah, METRO

Beth White, Houston Parks Board

Tracy Stephens, Gulfgate TIRZ, Sunnyside

Kurt Schulte, Walter P. Moore

Louis Cutaia, Walter P. Moore

Luis Guajardo, Asakura Robinson

Zakcq Lockrem, Asakura Robinson

Saima Musharrat, Asakura Robinson

COMMITTEE DISCUSSION GOALS

1. Engage the community to understand mobility issues.
2. Build on previous plans.
3. Provide engaging and accessible activities which encourage broad-based participation.
4. Develop an implementation strategy.

AGENDA

1. Bus tour
2. Welcoming attendees and sign-in
3. Elected officials' welcome remarks
4. Presentation
5. Facilitated stations
6. Regroup, remarks, Q&A



BUS TOUR

An hour-long bus tour started from Harbach-Ripley Neighborhood Center and took the committee members through the study area for an overview of existing conditions. The route included segments of Dixie Dr, Park Place Blvd, Broadway St, Airport Blvd, Scott St, and frontage of 610. The intent was to call attention to representative mobility issues throughout the study area, including congestion and multimodal conflicts on Broadway St and other segments near IH 45, the important role of Hobby Airport as a regional destination, the planned intersection treatments and greenspace by Houston Parks Board along Sims Bayou Trail, and the need for evaluating existing intersections, sidewalks, and bus stops near the planned Sunnyside multi-service center, general roadway and sidewalk conditions throughout the community, and the limitations of access and connectivity within local neighborhoods.

MEETING NOTES

The meeting kicked off with a round of introductions that included committee members, elected and appointed officials, city staff, and consultant teams, followed by feedback of the hour-long bus tour that took place before the meeting. Several comments from the committee members included:

- The new Sunnyside Community Center will be built on Reed Road,
- Bellfort Ave. from MLK to 288 needs improvements,
- Scott Blvd/Airport and other streets are getting extra traffic from 288 expansion,
- Telephone Road- pavement failure due to truck traffic,
- Investment in the Study Area has not kept up with the community's need,
- Need for comprehensive policy that includes land use, parking, streetscape, etc. and
- Hobby Livable Centers Study as a resource.

Afterwards, a 15-minute presentation by Kurt Schulte oriented the committee members about the study area, project goals, timeline, and examples of study recommendations. The presentation ended with a group exercise that asked the following questions for input.

1. What does success look like in this project?

- Improved enforcement of existing policies and ordinances - participants voiced concerns about the city not enforcing existing policies and ordinances in various communities within the study area and the need to start there.
- Improved access to services and programs - the study area has many different communities with varying levels of assets. Participants suggested a more interconnected study area should focus on enhancing mobility to existing services and programs, as well as increased connections between neighborhoods.
- Improved coordination with utilities and examination of pedestrian obstructions - natural and man-made barriers are prevalent throughout the study area and participants inquired about the project team's coordination with freight and energy sectors to develop realistic solutions.
- Improved streets and sidewalks with asphalt - neighborhoods with industrial uses are dealing with degraded pavement conditions that do not lend themselves to low-cost multimodal restriping and may be costlier than estimated in city-wide plans. This plan should identify conditions on these corridors that have been identified for transit, bike, and/or pedestrian amenities to better estimate costs.

2. Indicate your most important mobility goals.

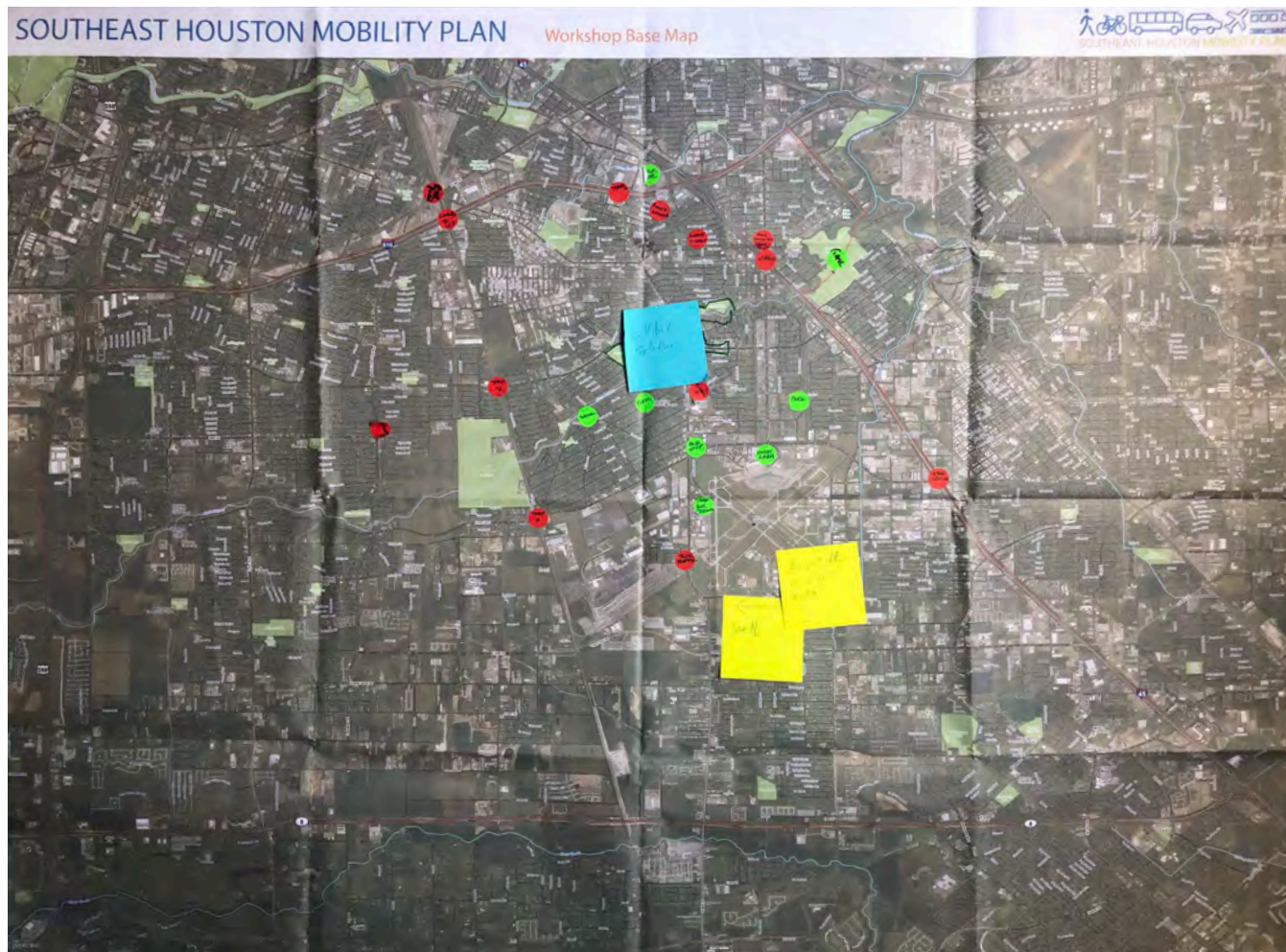
- Connected communities - fragmented communities throughout the study area could be improved through mobility recommendations.
- Comprehensive drainage plan for streets - underground infrastructure investments are stifling revitalization opportunities.
- Multimodal mobility options for all road users - people in the study area walk, bike, and ride transit more than in other areas of the city yet the roadway infrastructure does little to support these transportation needs.
- Pedestrian safety on streets and transit stops - areas leading to transit stops remain unsafe, through lack of sidewalks, lighting, and maintenance of right of way.
- High visibility on crosswalks - better signage to motorists and cyclists about pedestrian crossing areas.
- Understand mobility patterns in the Study Area - does the roadway network support people passing through the study area or support people living in the study area?
- Educate residents about the recommendations
- Access to and from, and within the Study Area
- Identify immediate impact projects as well as long-term projects - the implementation component of the plan should clearly delineate between long term aspirational investments and those catalytic projects that can make an immediate impact to people's current transportation needs.
- Ensure share of City of Houston maintenance budget - as the City of Houston revises its maintenance obligations throughout the city, communities in the study area should be prioritized for the legacy of neglect that exacerbated issues and costs.
- Coordinated and phased investment strategy
- Leverage resources from TIRZ and Management District
- Create a resource pool from City, County and METRO - leverage partnerships and align resources to maximize impact.



1. Identify key transportation gaps in the community. What major destinations (parks, schools, job centers, trails, etc.) should this project work to improve transportation choices to? (Use the Map in the next page to identify places)

This activity asked the committee members to use green dots to identify the major destinations and red dots to identify the gaps on the map. Participants identified the existing schools, parks, Hobby airport, and 1940 Air Terminal Museum as the major attractors in the study area. The upcoming mixed-use development at Bellfort Station in the Hobby Area Management District was identified as a major destination in near future, which will also generate high traffic volume. Several gaps identified in the study area included:

- Truck traffic on Telephone Road,
- Congestion around Ortiz Middle School,
- Dangerous intersection at I-45 frontage road and College Ave,
- Unsafe design of traffic circle on Park Place Blvd,
- Stray dogs in the neighborhood at the Park Place Blvd and Reveille St,
- Traffic congestion on Woodridge Dr,
- Connectivity issue to I-610 from Mykawa St.



2. What are the biggest challenges and opportunities to mobility in this area?

Committee members identified the following challenges to mobility in Southeast Houston:

- Infrastructure in need of repair,
- Lack of bike connectivity and safety,
- Drainage and open ditches,
- Unequal distribution of resources to invest in different neighborhoods,
- Mixture of land uses that makes it difficult to design for different traffic volumes ,
- Need focus on all streets,
- Lack of connections to civic destinations and business centers via transit,
- Average driving distance in the study area may be longer (need to be looked at),
- Access to transit is limited by the missing sidewalks and prevalence of open ditches,
- HISD transportation service provided to households 2 miles away from schools where families living within that boundary are caught between no bus service and poor multimodal options,
- Limited mobility options for aging residents,
- Lack of transit in the neighborhood retail and business,
- Rigorous collaboration between METRO and rideshare options missing, and
- Proposed SH35 as a divider in the community.

Several opportunities identified by the members included:

- Proximity to Sims Bayou Greenway and open space along the bayou,
- Proximity to Hobby airport, NRG stadium, 2 LRT stations,
- Low congestion compared to the city,
- Availability of wide Right-of-Way,
- Road diet options to be implemented on the current wide lanes,
- Microcosm of City of Houston,
- Active participants in neighborhoods,
- Better connectivity options in bike plan,
- Identify neighborhood-level generators,
- Build on existing mobility planning in the Study Area, and
- Animal control.



JOINT TECHNICAL AND ADVISORY COMMITTEE

05.24.2018

AGENDA

- 1. BUS TOUR FEEDBACK**
- 2. INTRODUCTIONS**
- 3. PROJECT GOALS AND BACKGROUND**
- 4. SCHEDULE**
- 5. SMALL GROUP ACTIVITY**

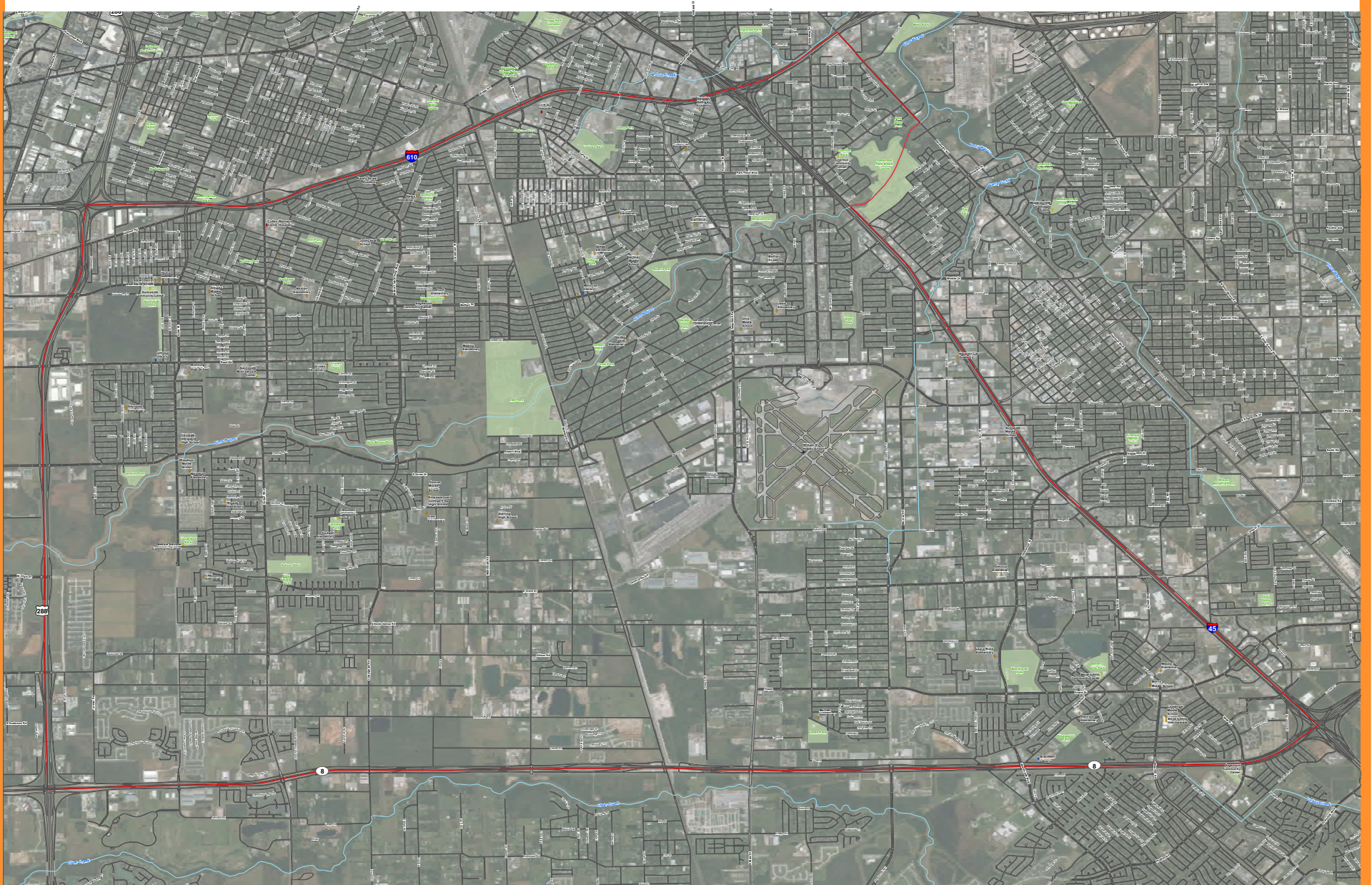
INTRODUCTIONS

- ELECTED AND APPOINTED OFFICIALS
- COMMITTEE MEMBERS
- CITY STAFF
- CONSULTANT TEAM

WALTER P MOORE



STUDY AREA

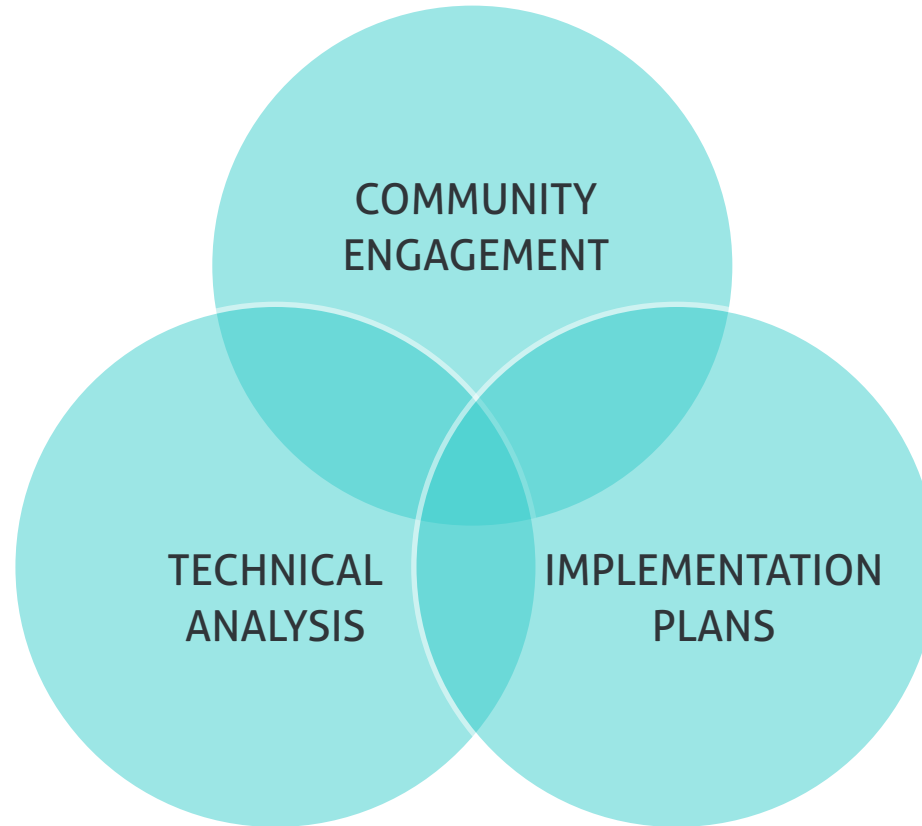


PROJECT GOALS

1. ENGAGE THE COMMUNITY TO UNDERSTAND MOBILITY ISSUES
2. BUILD ON PREVIOUS PLANS
3. PROVIDE ENGAGING AND ACCESSIBLE ACTIVITIES WHICH ENCOURAGE BROAD-BASED PARTICIPATION
4. DEVELOP AN IMPLEMENTATION STRATEGY

PROJECT GOALS

PLANNING FUTURE MOBILITY NEEDS
IS A COMPLEX PROCESS THAT REQUIRES
THREE DISTINCT BUT CONNECTED ELEMENTS.



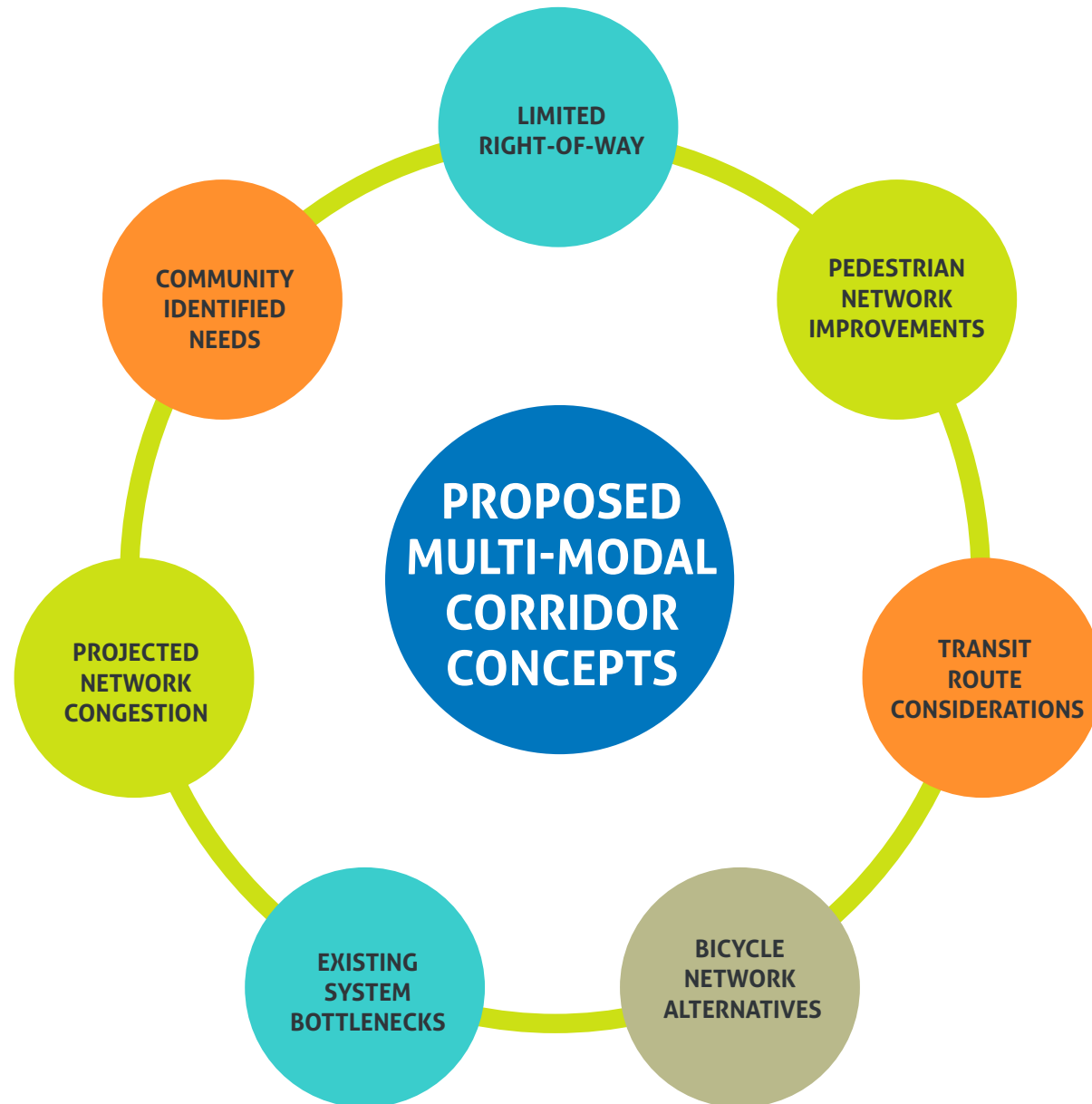
TIMELINE



ENGAGE WITH COMMUNITY

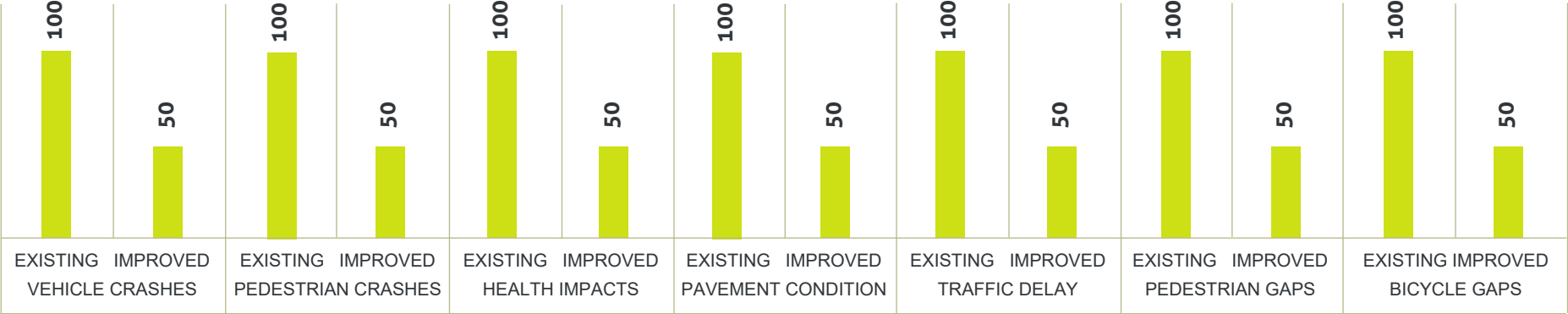


TECHNICAL ANALYSIS



EXISTING CONDITIONS SCORECARD – NEXT MEETING

MOBILITY SCORECARD



IMPLEMENTATION

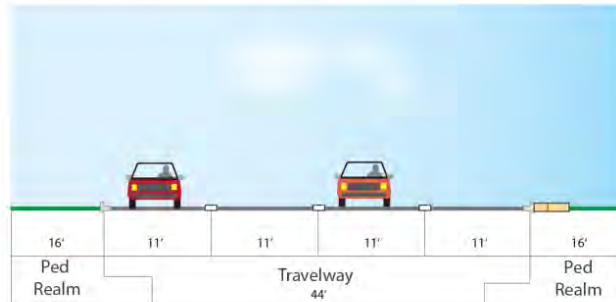
MULTI-MODAL STREET CLASSIFICATION – STUDY RECOMMENDATION

EXISTING

T-4-80

Major Thoroughfare - Four Lanes - 80' ROW

80' R.O.W



PROPOSED

York

Context

Urban

Pedestrian



Bikeway

Buffer

Freight



Parking

Transit



York

4-Lane, 2-way Urban Avenue (Major Thoroughfare)

80' R.O.W



Sampson

Context

Urban

Pedestrian



Bikeway



Buffer



Freight



Parking



Transit

Sampson

2-Lane, 2-way Urban Street (Major Collector)

80' R.O.W



IMPLEMENTATION

Consolidated Transportation Planning 3.3
 Planning & Development Department, City of Houston

REBUILD HOUSTON
better streets. better drainage. better future.

Inventory of Candidates (Unfunded and Unscheduled): SAMPSON (NT02)

[Pre-Engineering Summary](#)

[Zoom to](#)

Layer List

Click to expand layers or turn them on/off

- COH Planning (Transportation)
- COH Traffic-related
- TxDOT Traffic Counts
- COH CIP
- H-GAC TIP/RTP
- ☒ COH Rebuild Houston (Street)
- Fort Bend Co. Mobility Bond Proj
- Fort Bend Co. MTP
- COH Bikeway

FY 2013 Candidate Projects (\$ Thousands)

Street & Traffic Control Program - Thoroughfares

Candidate Project Summary Information			
Need Area:	NT02	Alternative No.:	2 Inline Detention
Name:	Sampson Street / York Street	Council District:	H
Limits:	Polk Street to Navigation Boulevard	Key Map No.:	494N, 494S
Type:	Major Thoroughfare	Super Neighborhood:	Second Ward
WBS No.:		Total No. of Sub-projects:	2
Description:	Project provides for the ROW acquisition, design and construction of Sampson Street to a 2-Lane Non-Divided concrete road and York Street to a 4 lane Non-divided road with curbs, sidewalks, driveways, street lighting, traffic control, necessary underground utilities and inline detention. Project includes 2 at grade crossing over UPRR tracks south of Capitol Street.		
Justification:	Project will replace two streets that have been deteriorated beyond economical repair and normal maintenance. It will improve traffic circulation, mobility and drainage in service area.		

SMALL GROUP EXERCISE

- **WHAT DOES SUCCESS LOOK LIKE IN THIS PROJECT?**
- **WHAT GOALS SHOULD INFORM THIS STUDY?
(I.E. ACCESS, EQUITY, SAFETY)**
- **WHAT MAJOR DESTINATIONS (PARKS, SCHOOLS, JOB CENTERS, TRAILS, ETC.) SHOULD THIS PROJECT WORK TO IMPROVE ACTIVE TRANSPORTATION CHOICES TO? (MAP ALLOWING PEOPLE TO IDENTIFY PLACES)**
- **WHAT ARE THE BIGGEST CHALLENGES TO MOBILITY IN THIS AREA?**

QUESTIONS?

MAY KICKOFF WORKSHOP

City of Houston | Southeast Mobility Study



STUDY PURPOSE

The purpose of the Southeast Houston Mobility Plan is to conduct a comprehensive mobility study in the area bound by Interstate 610 to the north, State Highway 288 to the west, State Highway Beltway 8 to the south, and Interstate 45 and Galveston Road to the east. The Plan will guide the City of Houston’s short, medium, and long-term multi-modal mobility planning efforts and to identify implementation projects that will improve mobility and access in the Area.

COMMENTS:

TIMELINE



WORKSHOP ACTIVITY QUESTIONS

A. What does success look like in this project?

NOTES:

B. Indicate your most important mobility goals. (i.e. safety, vehicle delay, pedestrian accessibility)

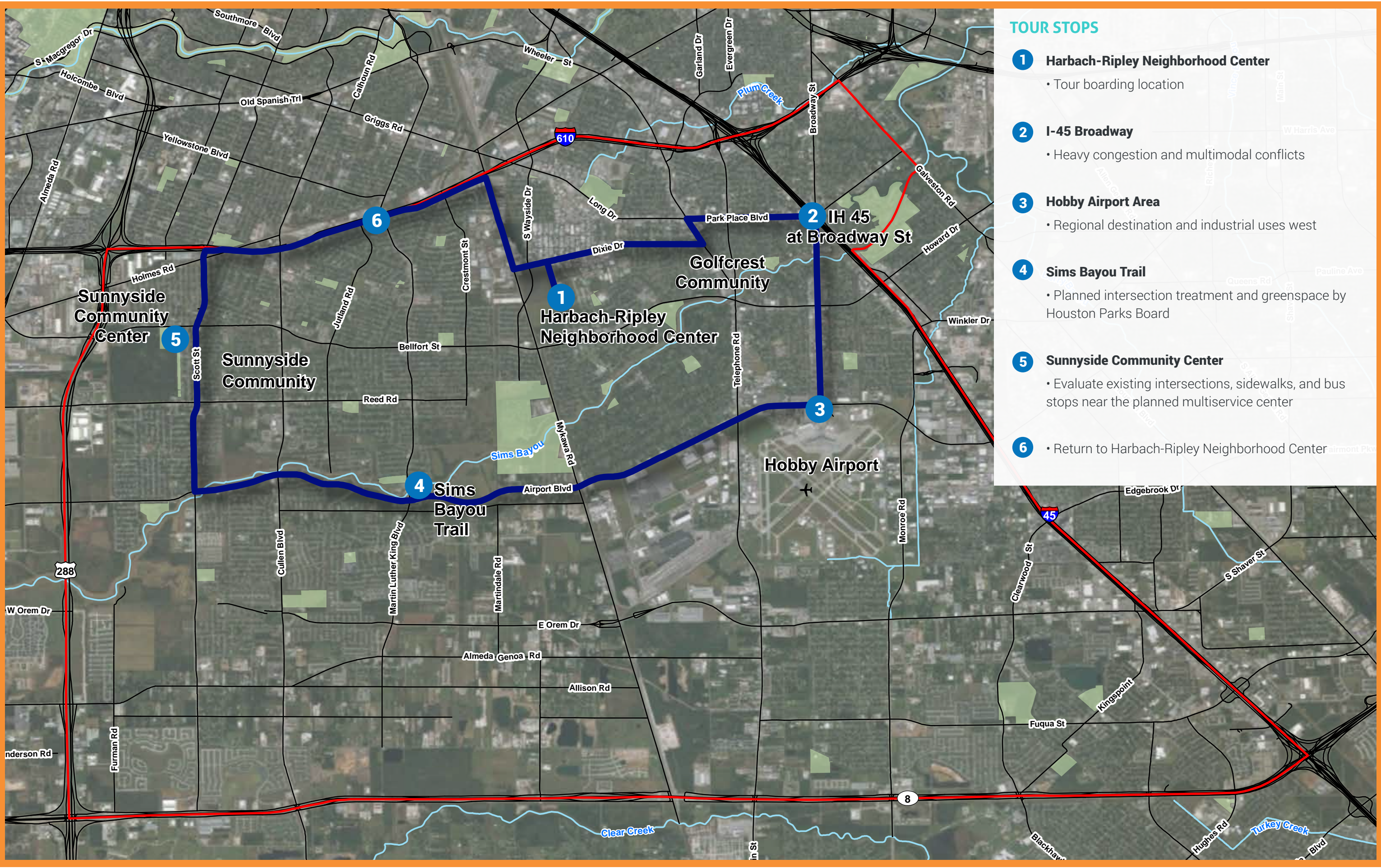
NOTES:

C. Identify key transportation gaps in the community. What major destinations (parks, schools, job centers, trails, etc.) should this project work to improve transportation choices to? (Use the Map in the next page to identify places. Please include projects from other studies that are relevant.)

NOTES:

D. What are the biggest challenges and opportunities to mobility in this area?

NOTES:



TOUR STOPS

- 1 Harbach-Ripley Neighborhood Center**
 - Tour boarding location
- 2 I-45 Broadway**
 - Heavy congestion and multimodal conflicts
- 3 Hobby Airport Area**
 - Regional destination and industrial uses west
- 4 Sims Bayou Trail**
 - Planned intersection treatment and greenspace by Houston Parks Board
- 5 Sunnyside Community Center**
 - Evaluate existing intersections, sidewalks, and bus stops near the planned multiservice center
- 6**
 - Return to Harbach-Ripley Neighborhood Center