

Southeast Houston Mobility Plan Web Application

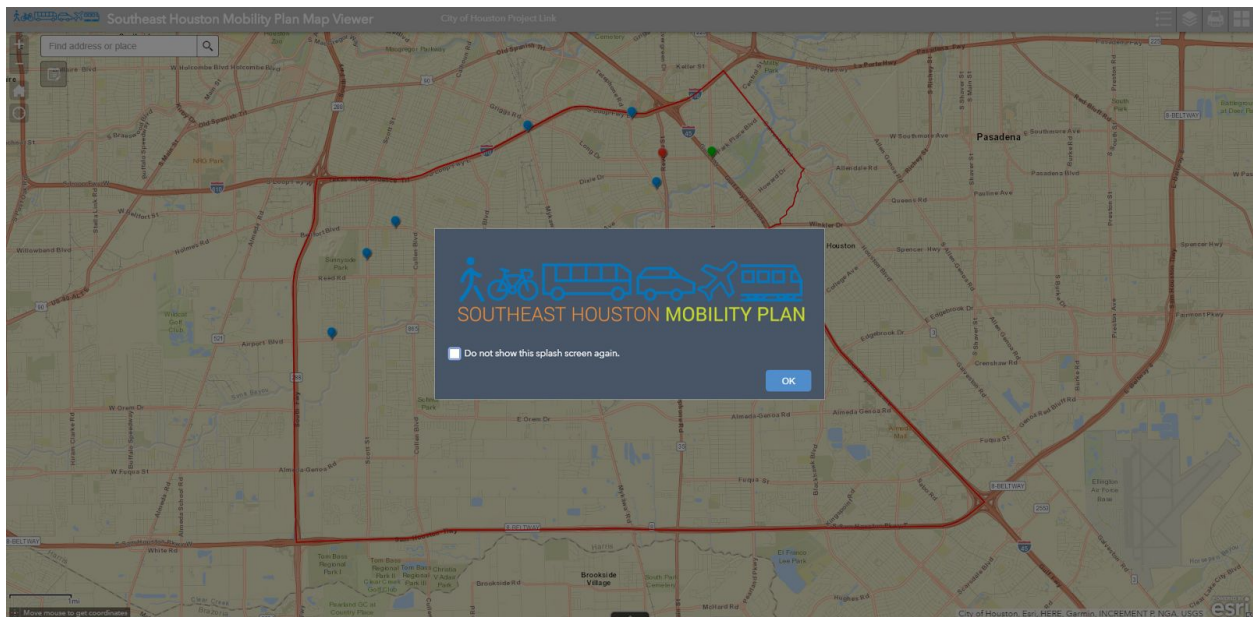
HOW TO PROVIDE COMMENTS (Desktop Version)



The link below will provide you access to the Southeast Houston Mobility Plan Web Application that includes study area demographics, neighborhood characteristics and mobility related infrastructure and the ability to provide comments.

<https://wpm2.maps.arcgis.com/apps/webappviewer/index.html?id=4a1633c4f9d54ad2af93f55402542738>

STEP ONE: After clicking on the link, you will be directed to the following splash screen. Click the 'OK' button to enter the web application.



STEP TWO: On the top right of the screen, there are four buttons that provide the following information



Legend

Displays labels and symbols for layers in the map



Layer List

Provides a list of operational layers and their symbols and allows you to turn individual layers on and off.



Print

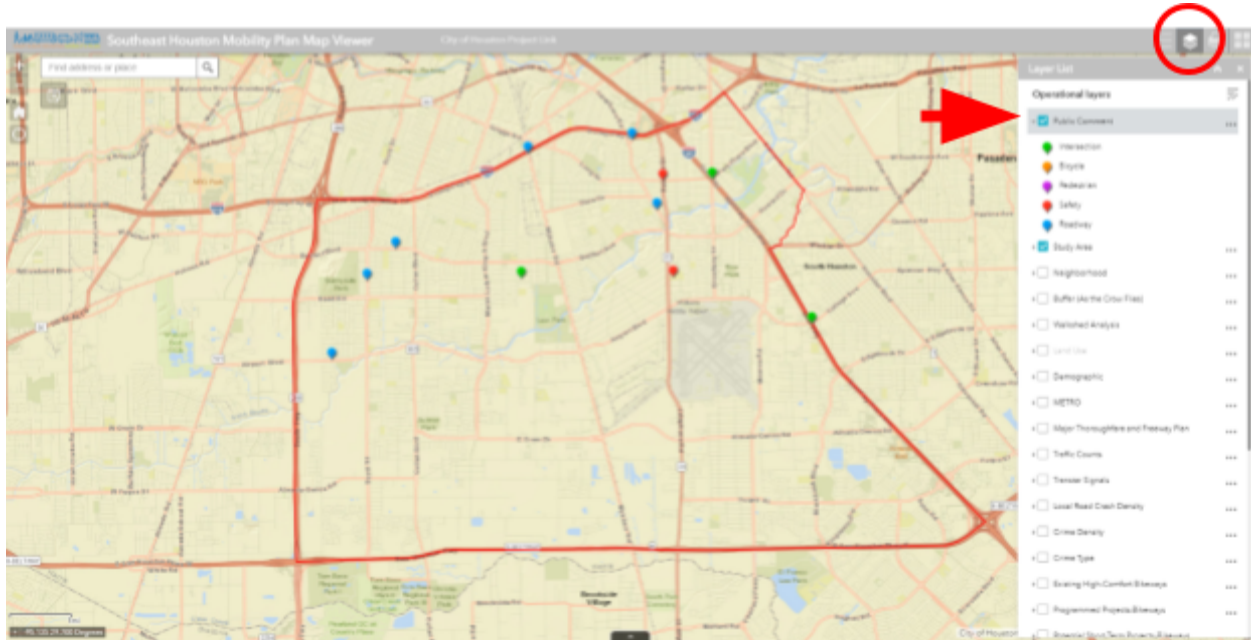
Connects the web app with a printing service to allow the current map to print



Basemap ...

Presents a gallery of basemaps and allows you to select one from the gallery as the basemap for your app.

STEP THREE: After clicking on the 'Layer List' icon, you will see all the operational layers that can be added to the map for analysis. Click the layer's name to open and close the list of categories. Click the box to turn the layer on or off. The Public Comment layer has five categories: Intersection, Bicycle, Pedestrian, Safety, and Roadway.



STEP FOUR: Click on the 'Edit' button on the top left corner under the 'Find Address or Place' search bar. This will open the editing tool allowing you to click a template (Roadway, Intersection, Bicycle, Pedestrian, or Safety).

