

# Houston Planning Commission

## 2019 Major Thoroughfare and Freeway Plan Amendment Requests Workshop

### AGENDA

Thursday, May 09, 2019

Meeting to be held in  
Council Chamber, City Hall Annex  
1:00 p.m.

#### Call to Order

#### Director's Report

- I. Introduction and Terminology - Peter Eccles**
- II. Major Thoroughfare Amendment Requests – Private Sector**
  - A. Acres Homes- Carver & Cebra – BGE, Inc.
  - B. Bridgeland & Tuckerton – BGE, Inc.
  - C. Crockett & Hogan – Paul Benz
  - D. West Gray – Bowden Land Services
  - E. Braeswood – Vernon Henry and Associates
- III. Major Thoroughfare Amendment Requests – Public Sector**
  - F. FM 359 – Fort Bend County
  - G. City of Houston Planning and Development Department
    - 1. Hogan Street
    - 2. Downtown/Midtown Streets
  - H. Harris County Engineering Department
    - 1. NS Collector (between Holderrieh and Triechel)
    - 2. Spring Stadium Loop
    - 3. E-W Minor Collector
- IV. Next Steps**
- V. Public Comment**
- VI. Adjournment**

# 2019 MTFP Requested Amendments Workshop

Houston Planning Commission  
Thursday, May 9, 2019



**PLANNING &  
DEVELOPMENT  
DEPARTMENT**

# Agenda

- I. Introduction and Terminology
- II. Private Sector Requests
- III. Public Sector Requests
- IV. Next Steps
- V. Public Comment
- VI. Adjournment



**PLANNING &  
DEVELOPMENT  
DEPARTMENT**

# I. Introduction

- Annual amendment process and timeline
- Workshop
  - Introduce requested amendments
  - PC comments and suggests alternatives due **May 17, 2019**



# Terminology

## Street Classification

Principal Thoroughfare (**P**)

Thoroughfare (**T**)

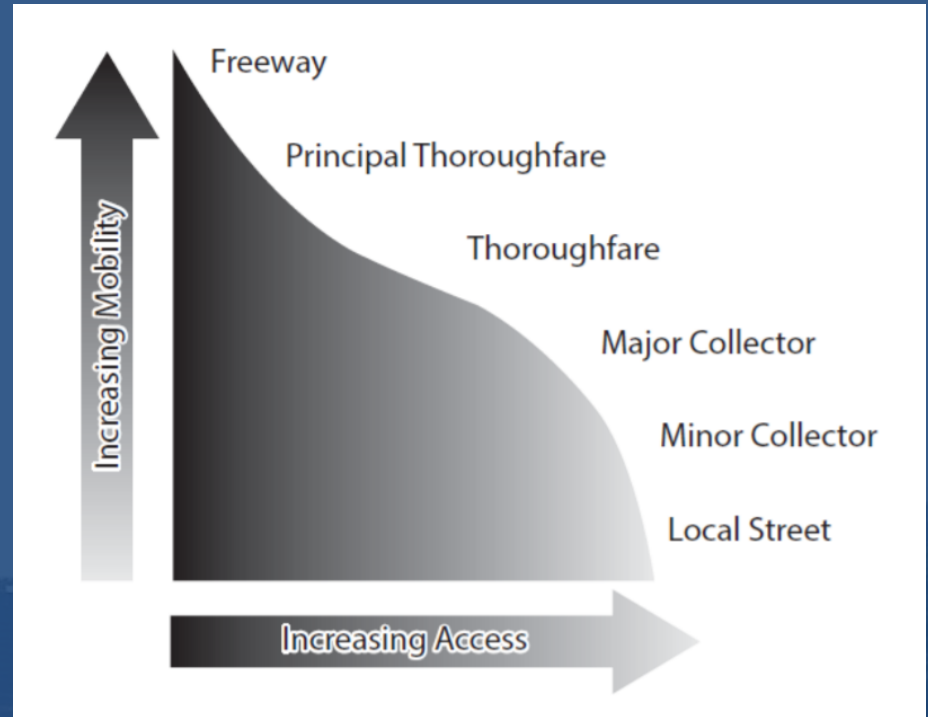
Major Collector (**MJ**)

Minor Collector (**MN**)

Transit Corridor Street (**TCS**)

Example: **T-4-100**

<b>T</b>	<b>Street classification</b>
<b>4</b>	Number of vehicular through lanes
<b>100</b>	Required right-of-way width (feet)



**PLANNING &  
DEVELOPMENT  
DEPARTMENT**



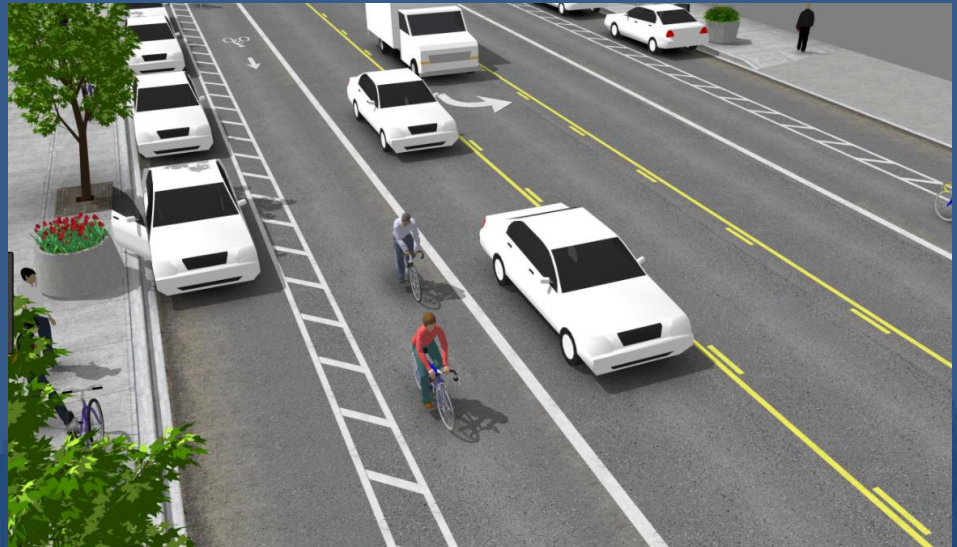
# Terminology

## Lane

number of vehicular through lanes needed to meet projected traffic volumes along a corridor

Example: **T-4-100**

- T** Street classification
- 4** Number of vehicular through lanes
- 100** Required right-of-way width (feet)



PLANNING &  
DEVELOPMENT  
DEPARTMENT

# Terminology

## Right-of-Way (ROW)

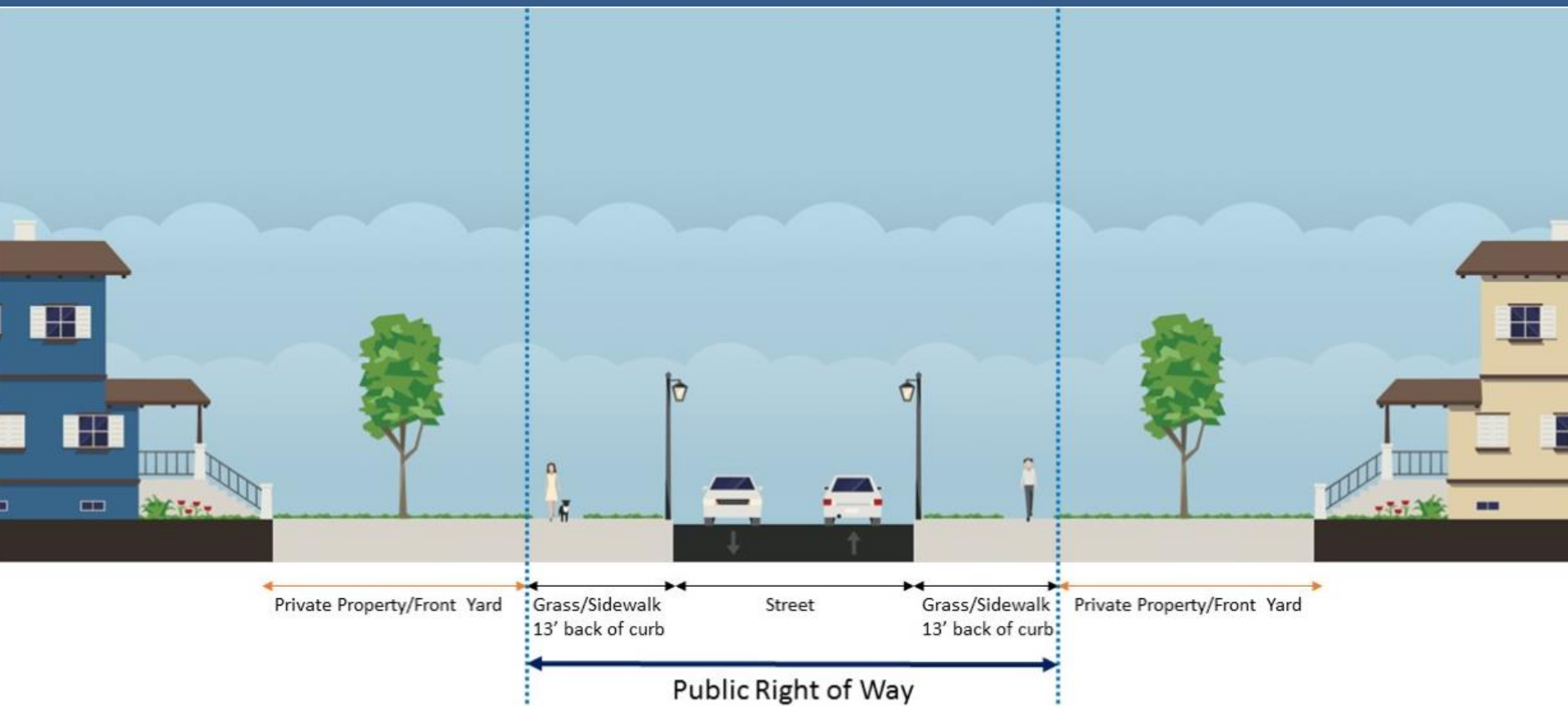
Area from property line to property line, including

- Landscaping
- Sidewalks
- Utilities
- Bike lanes
- Parking
- Travel lanes



# Terminology

## Right-of-Way (ROW)



PLANNING &  
DEVELOPMENT  
DEPARTMENT



# Terminology

## Existing Conditions vs. MTFP Classification

Name	2018 MTFP Classification	Existing Conditions	Proposed MTFP Classification
Bayou Drive	T-4-100	80' ROW, 2 lanes	MJ-2-80

## MTFP Map Legend

- Freeway
- Principle Thoroughfare or Thoroughfare
- Major Collector
- Minor Collector
- Transit Corridor Street



PLANNING &  
DEVELOPMENT  
DEPARTMENT

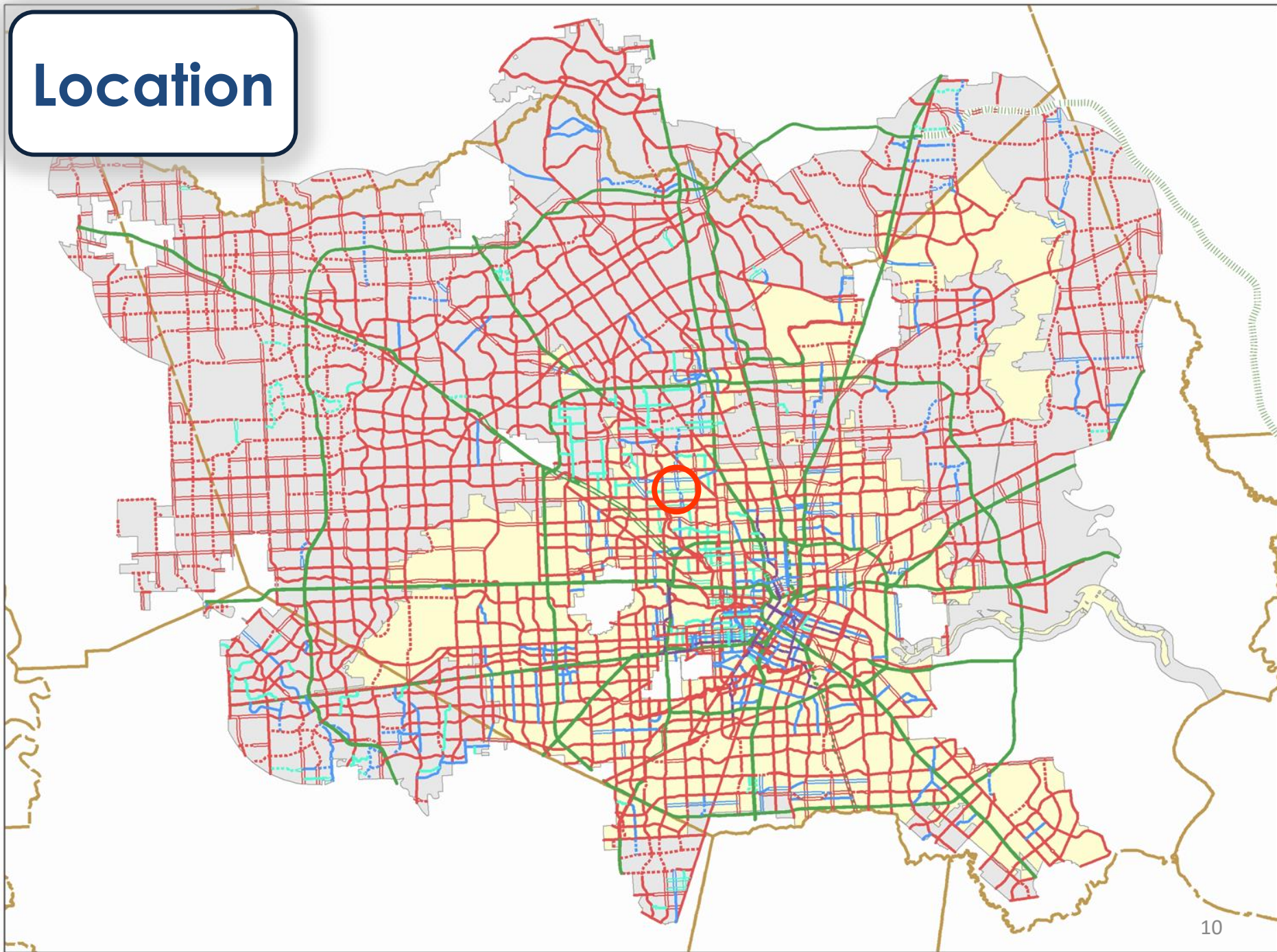
# A. Acres Homes – Carver & Cebra BGE, Inc.



PLANNING &  
DEVELOPMENT  
DEPARTMENT



# Location





# Request

Delete Cebra St (MJ-4-80/100) and add Carver Rd and Cebra St as Major Collectors to DeSoto St

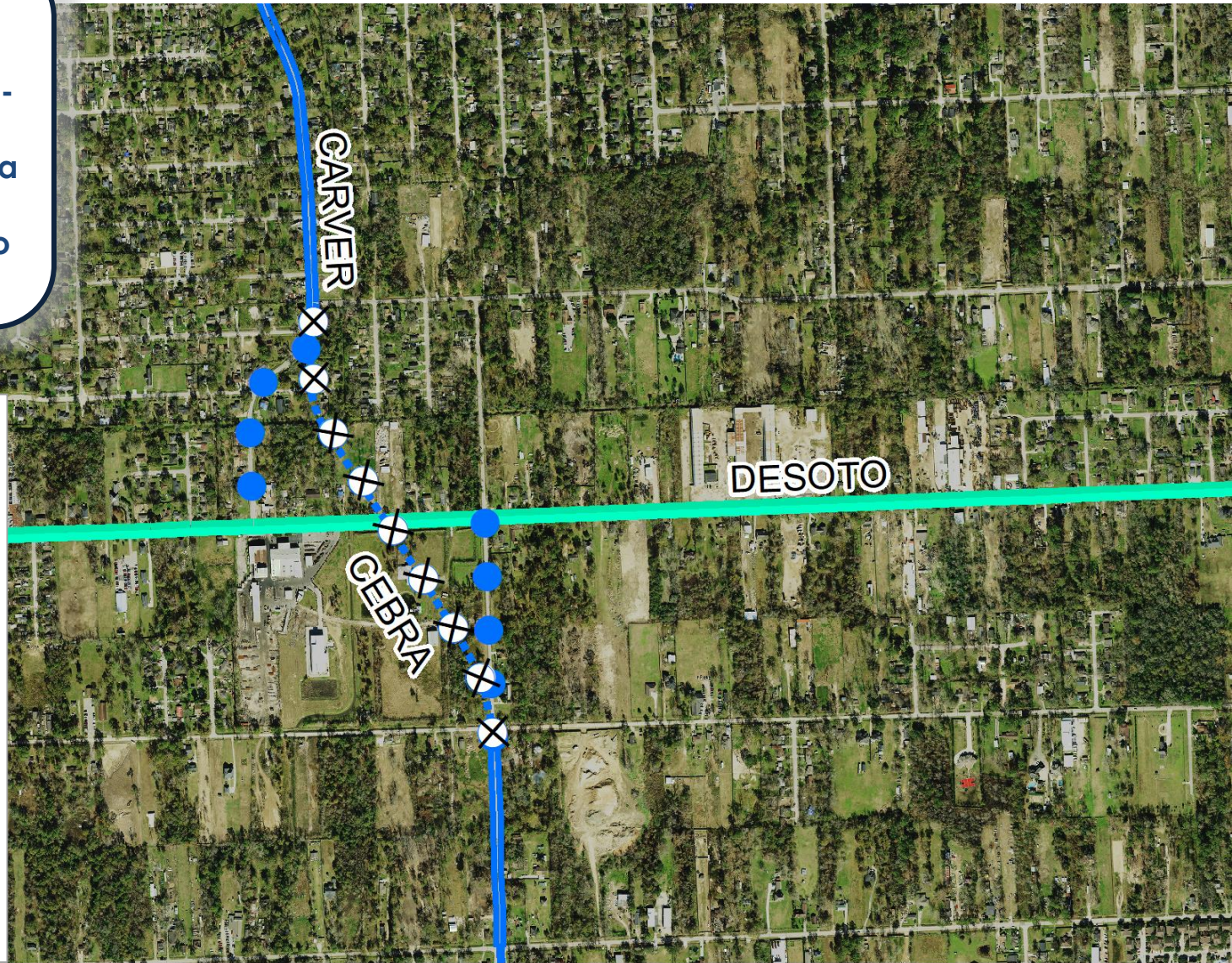
## MTFP AMENDMENT REQUEST

- ADD
- ⊙ REALIGN
- ⊗ DELETE

### RECLASSIFY

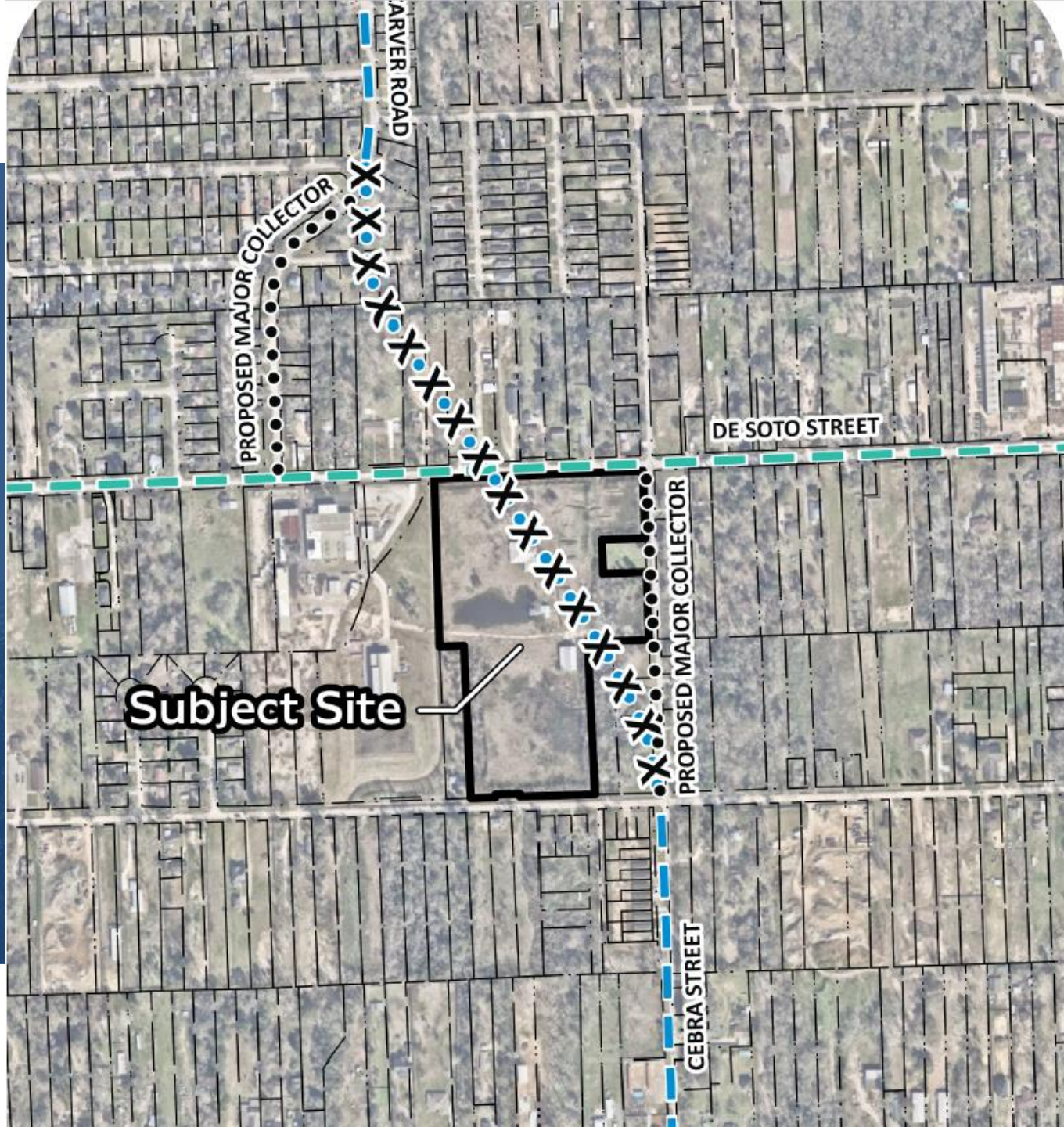
- Street Class
- △ ROW Width
- ◇ No. Lanes

- Freeway
- Major Thoroughfare
- Major Collector
- Minor Collector
- Transit Corridor Street



PLANNING &  
DEVELOPMENT  
DEPARTMENT







# Request

- Delete Cebra St (MJ-4-80/100) from Druid St to Mansfield St
- Add Carver Rd (from Druid St to DeSoto St) and Cebra St (from Mansfield to DeSoto St) as Major Collectors (MJ-4-80/100)

Name	2018 MTFP Classification	Existing Conditions	Proposed MTFP Classification
Cebra	MJ-4-80/100	2 lanes, 40 ft ROW, 20 ft street pvmt; Not existing from Druid to Mansfield	MJ-4-80/100
Carver	MJ-4-80/100	2 lanes, 60 ft ROW, 20 ft pavement	MJ-4-80/100



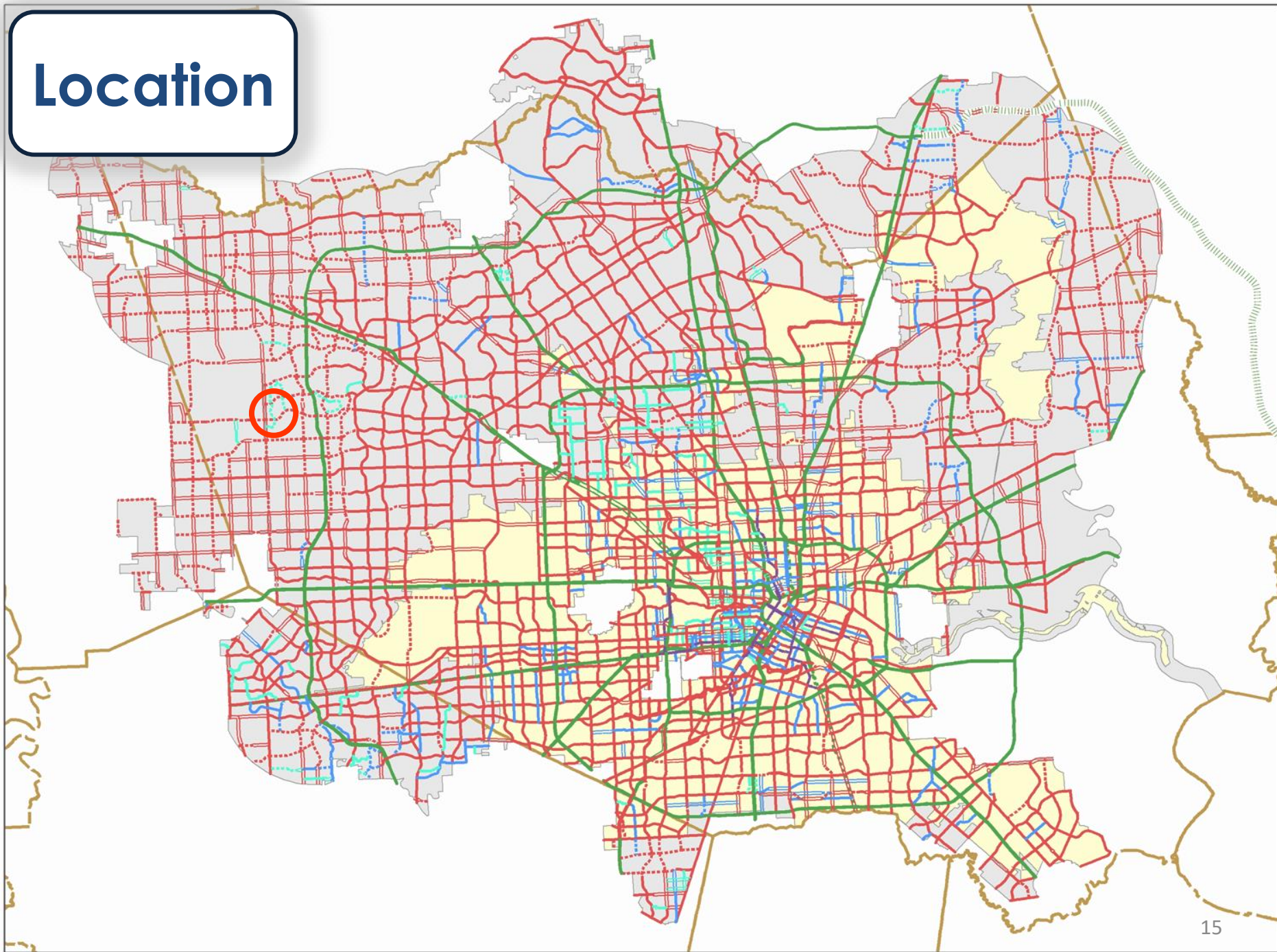
# B. Bridgeland & Tuckerton

BGE, Inc.



PLANNING &  
DEVELOPMENT  
DEPARTMENT

# Location





# Request

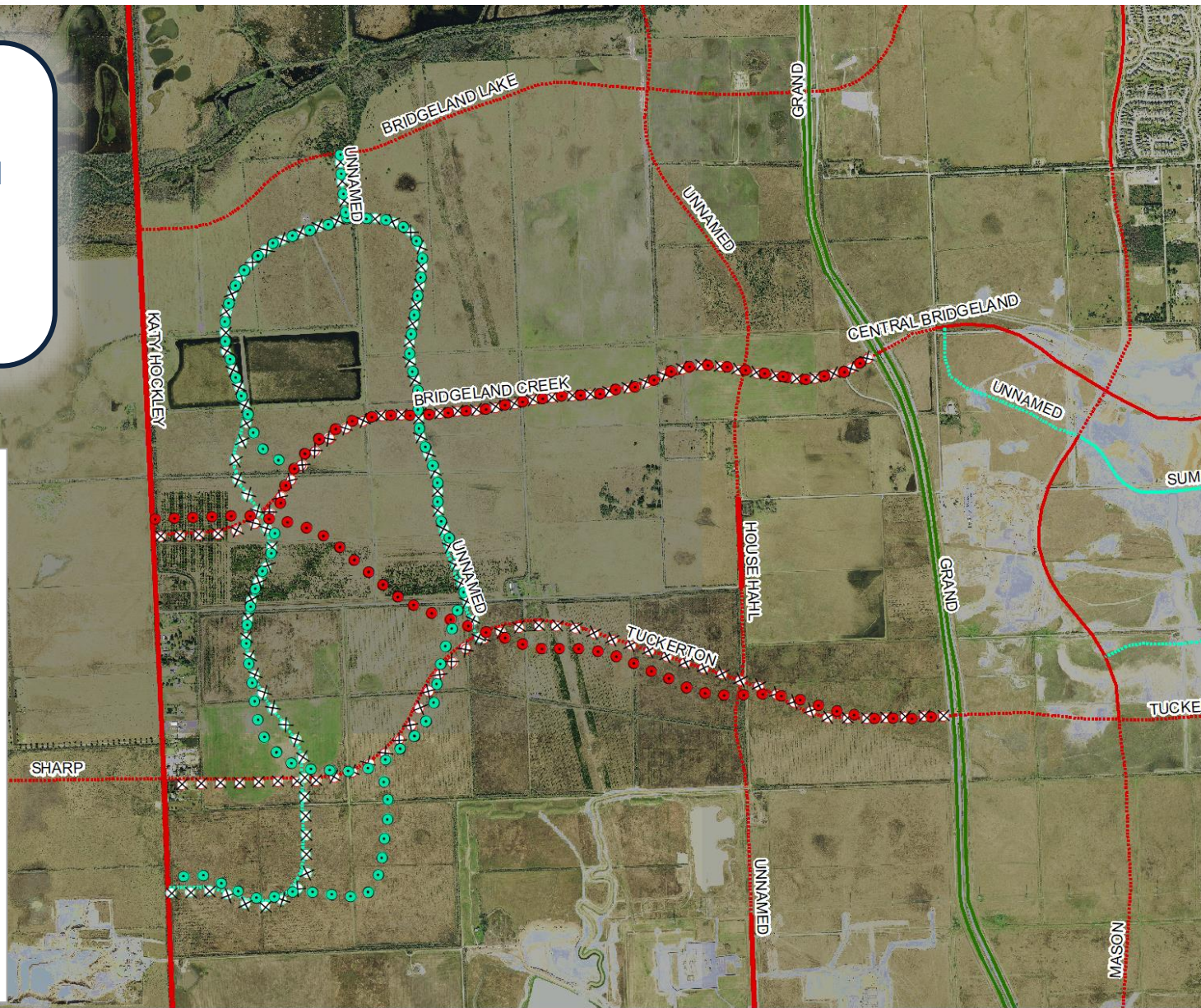
Realign Bridgeland  
Creek Pkwy,  
Tuckerton Rd and  
Unnamed Minor  
Collector

## MTFP AMENDMENT REQUEST

- ADD
- ⊙ REALIGN
- ⊗ DELETE

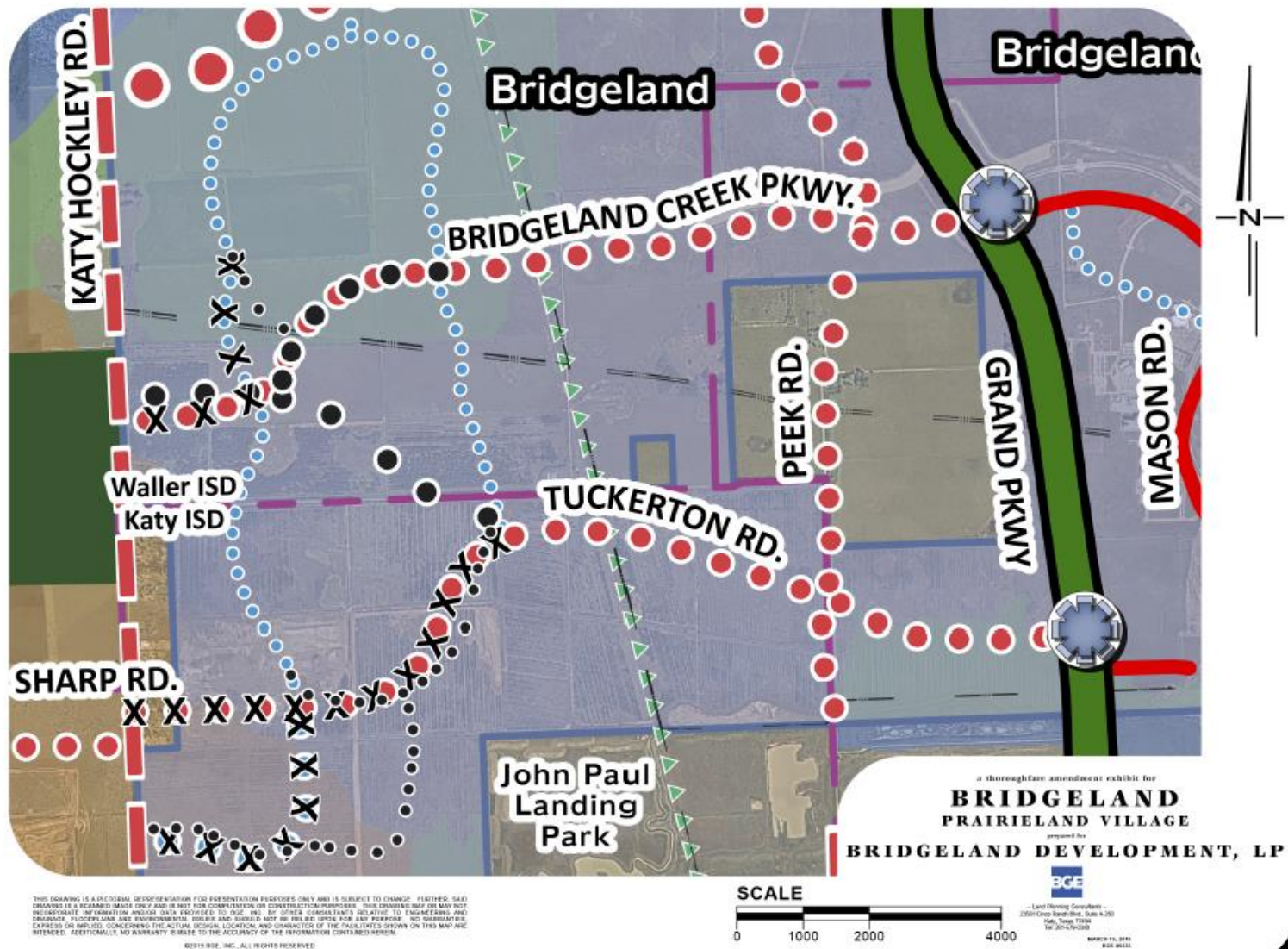
### RECLASSIFY

- Street Class
- △ ROW Width
- ◇ No. Lanes
- Freeway
- Major Thoroughfare
- Major Collector
- Minor Collector
- Transit Corridor Street



PLANNING &  
DEVELOPMENT  
DEPARTMENT





## PLANNING & DEVELOPMENT DEPARTMENT



# Request

- Realign Bridgeland Creek Pkwy (T-4-100), Tuckerton Rd (T-4-100) and Unnamed Minor Collector (MN-2-60)

Name	2018 MTFP Classification	Existing Conditions	Proposed MTFP Classification
Bridgeland Creek Pkwy	T-4-100	N/A	T-4-100
Tuckerton Road	T-4-100	N/A	T-4-100
Unnamed Minor Collector	MN-2-60	N/A	MN-2-60



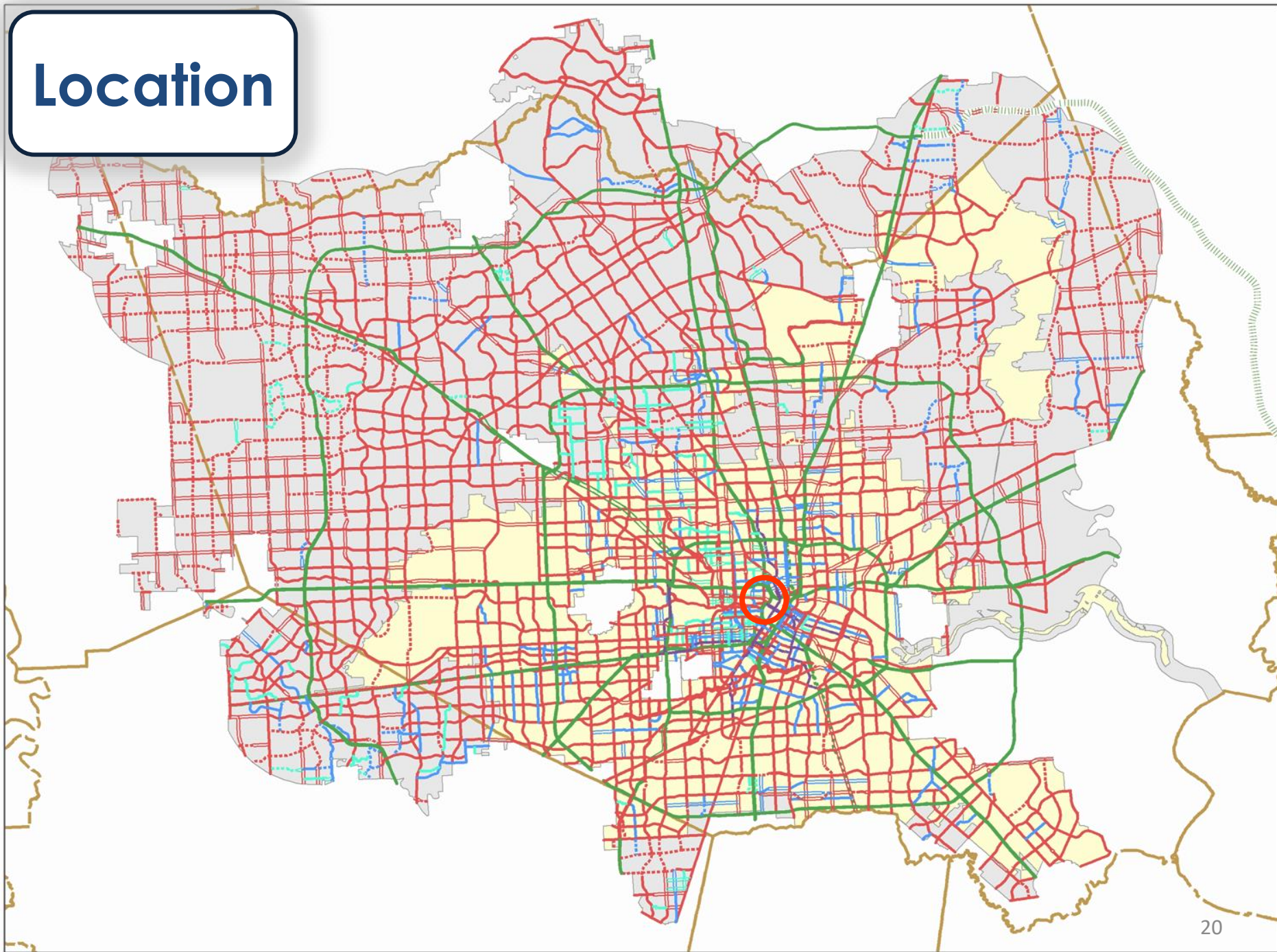
# C. Crockett Street

Paul Benz



PLANNING &  
DEVELOPMENT  
DEPARTMENT

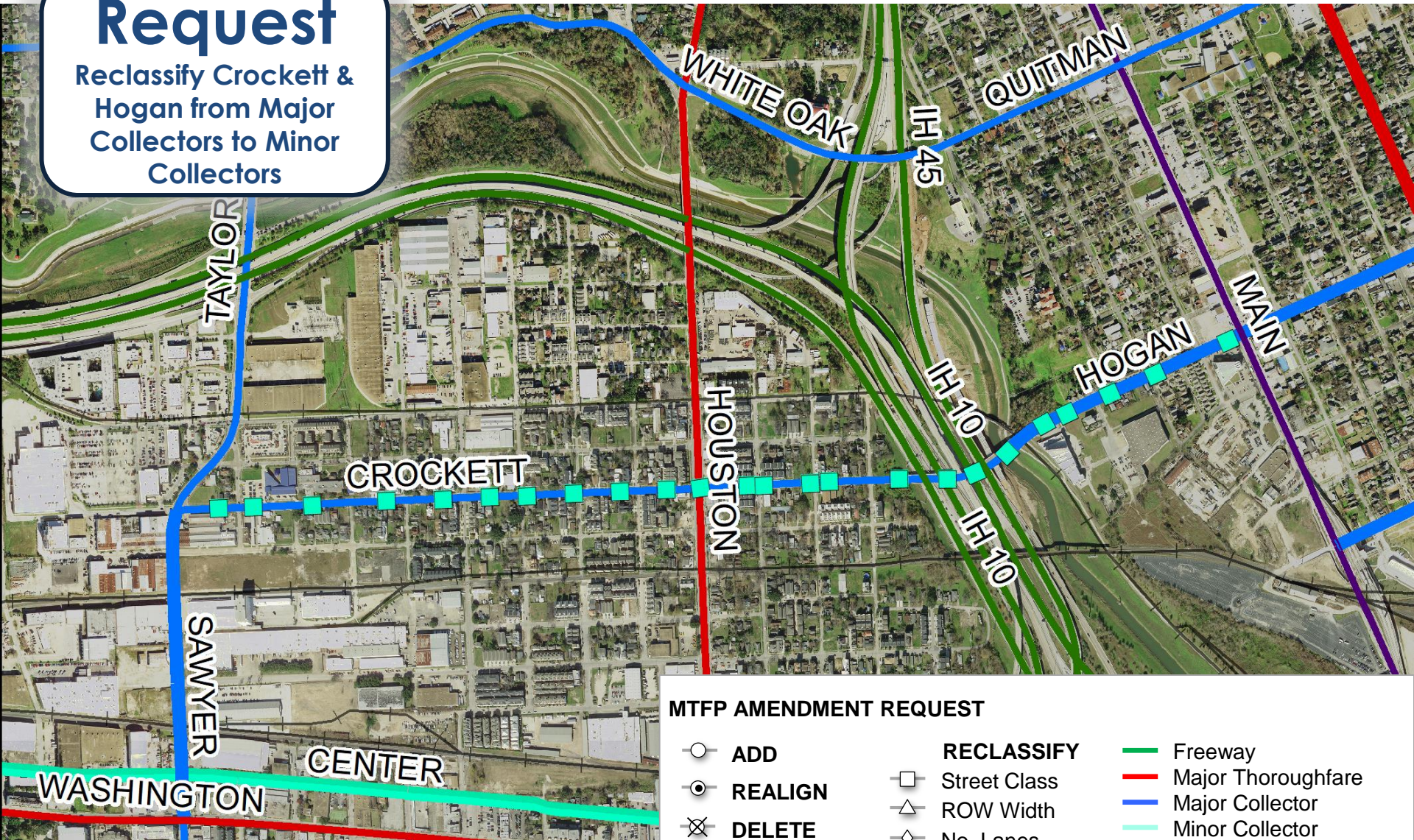
# Location





# Request

Reclassify Crockett & Hogan from Major Collectors to Minor Collectors



## MTFP AMENDMENT REQUEST

- ADD
- ◉ REALIGN
- ⊗ DELETE

### RECLASSIFY

- Street Class
- △ ROW Width
- ◇ No. Lanes

- Freeway
- Major Thoroughfare
- Major Collector
- Minor Collector
- Transit Corridor Street



PLANNING &  
DEVELOPMENT  
DEPARTMENT



# Request

- Reclassify Crockett Street from a Major Collector (MJ-2/4-70) to a Minor Collector (MN-2/4-70) from Sawyer Street to I-45
- Reclassify Hogan Street from a Major Collector (MJ-4-70/80) to a Minor Collector (MN-4-70/80) from I-45 to Main Street

Name	2018 MTFP Classification	Existing Conditions	Proposed MTFP Classification
Crockett	MJ-2-70; MJ-4-70	2-4 lanes, 70' ROW, 32-45' pavement width	MN-2-70; MN-4-70
Hogan	MJ-4-70/80	4 lanes, 55-60 ft ROW, 40 ft pavement	MN-4-70/80





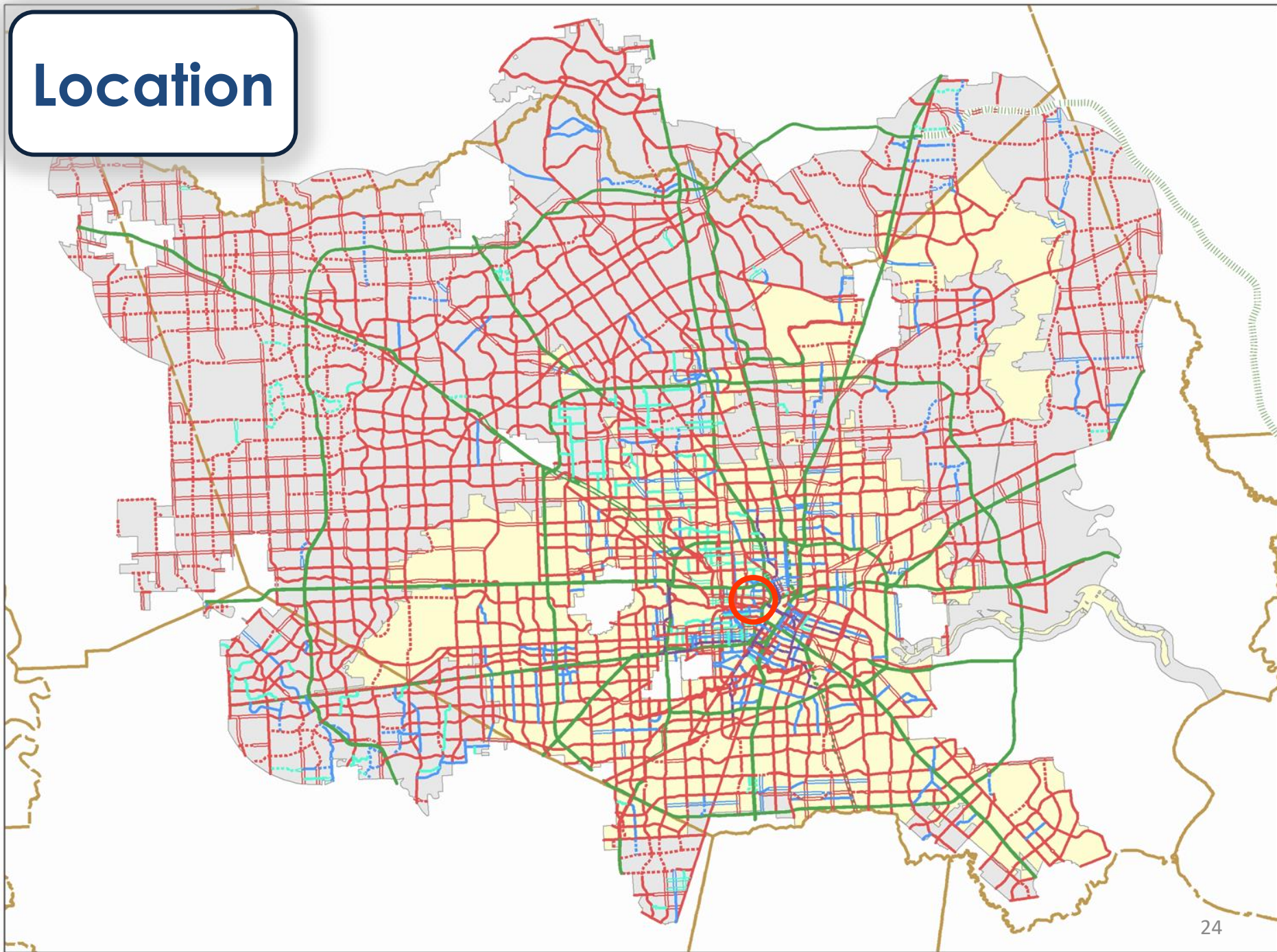
# D. West Gray

## Bowden Land Services



PLANNING &  
DEVELOPMENT  
DEPARTMENT

# Location





# Request

Decrease ROW on  
West Gray between  
Mathews and Cushing

## MTFP AMENDMENT REQUEST

- ADD
- ⊙ REALIGN
- ⊗ DELETE

### RECLASSIFY

- Street Class
- △ ROW Width
- ◇ No. Lanes
- Freeway
- Major Thoroughfare
- Major Collector
- Minor Collector
- Transit Corridor Street



PLANNING &  
DEVELOPMENT  
DEPARTMENT

# Request

- Reclassify ROW from T-3-70 to T-3-60 on West Gray between Mathews and Cushing (0.05 miles)

Name	2018 MTFP Classification	Existing Conditions	Proposed MTFP Classification
West Gray	T-3-70	3 lanes, 35 ft street pavement	T-3-60



# E. South Braeswood

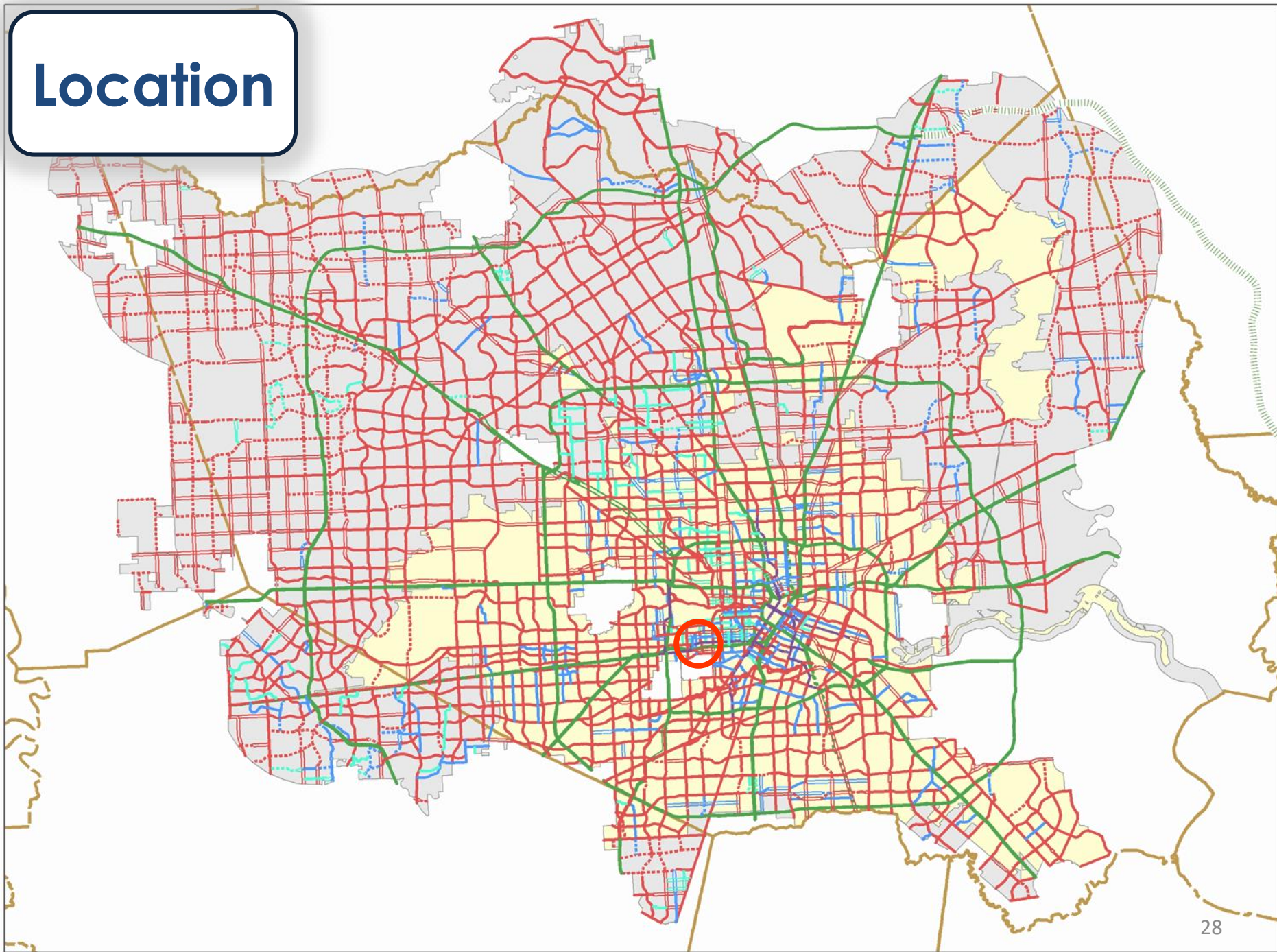
## Vernon G. Henry & Associates



PLANNING &  
DEVELOPMENT  
DEPARTMENT



# Location





# Request

Decrease ROW on  
South Braeswood  
between S.P.R.R. and  
Stella Link

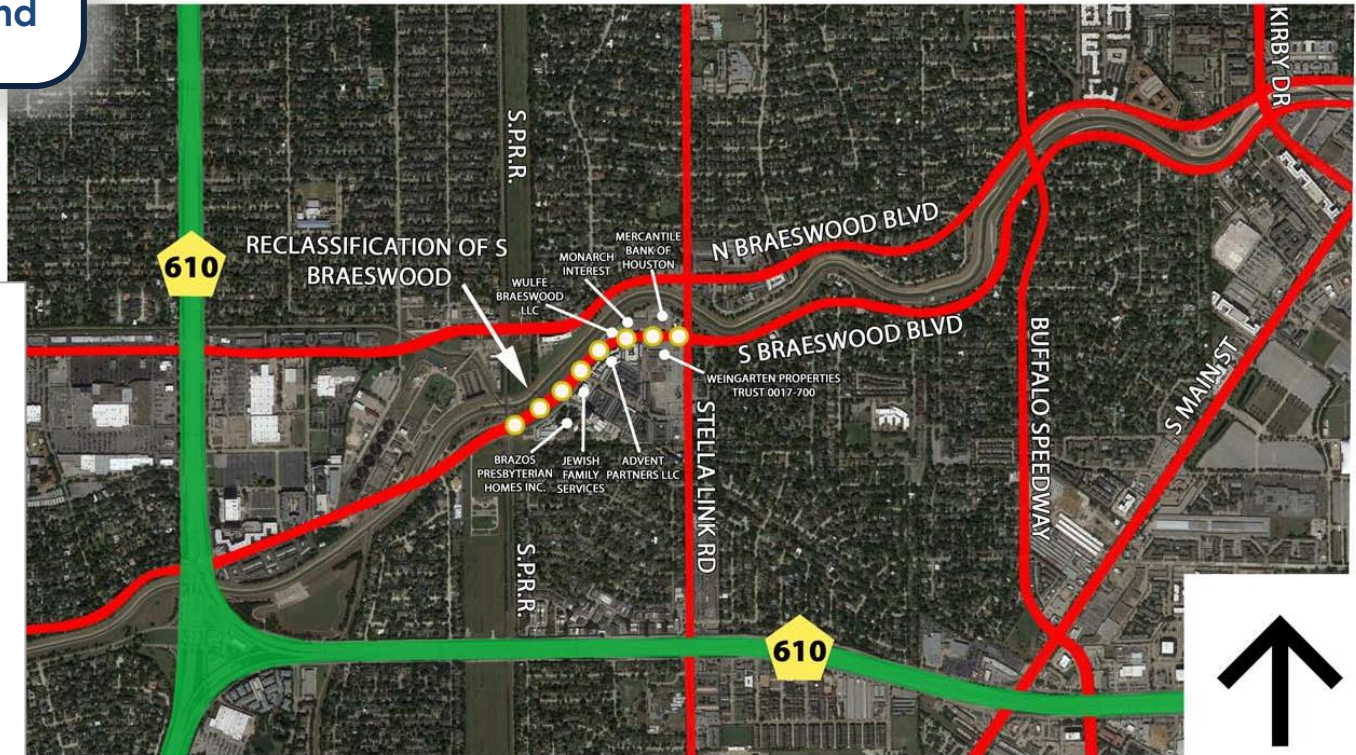
## MTFP AMENDMENT REQUEST

- ADD
- ⊙ REALIGN
- ⊗ DELETE

### RECLASSIFY

- Street Class
- △ ROW Width
- ◇ No. Lanes

- Freeway
- Major Thoroughfare
- Major Collector
- Minor Collector
- Transit Corridor Street



NORTH

0' 1000' 2000' 4000'  
SCALE: 1"=2000'



PLANNING &  
DEVELOPMENT  
DEPARTMENT

# Request

- Reclassify ROW from T-4-120 to T-4-80 on South Braeswood Boulevard between Southern Pacific Railroad and Stella Link Road (0.5 miles)

Name	2018 MTFP Classification	Existing Conditions	Proposed MTFP Classification
South Braeswood	T-4-120	4 lanes, 44-60 ft street pavement	T-4-80





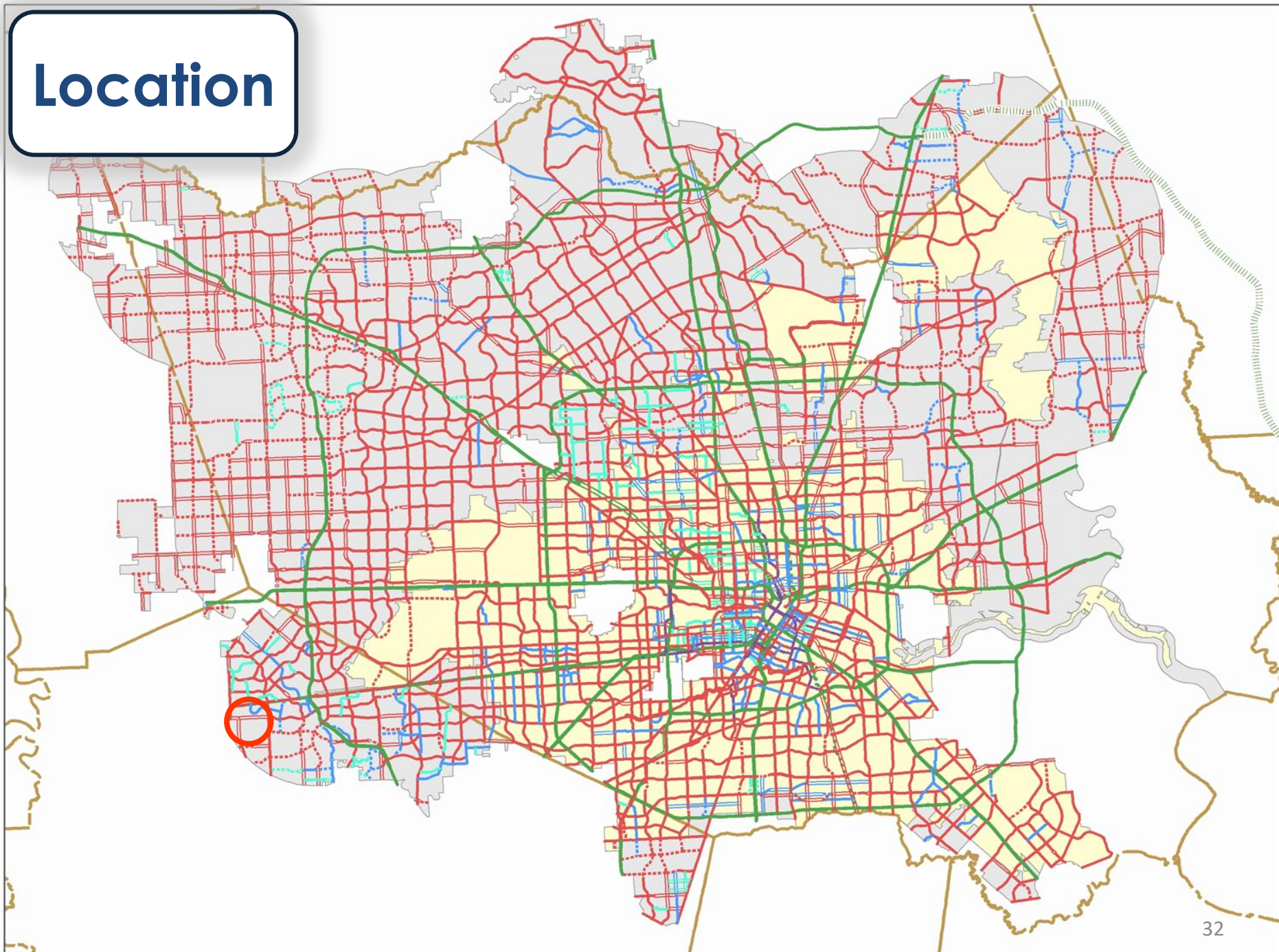
# E. FM 359

## Fort Bend County



PLANNING &  
DEVELOPMENT  
DEPARTMENT

# Location





# Request

Realign FM 359  
and Fulshear-  
Gaston

FM 1463

MCKINNON

FULSHEAR GASTON

FM 359

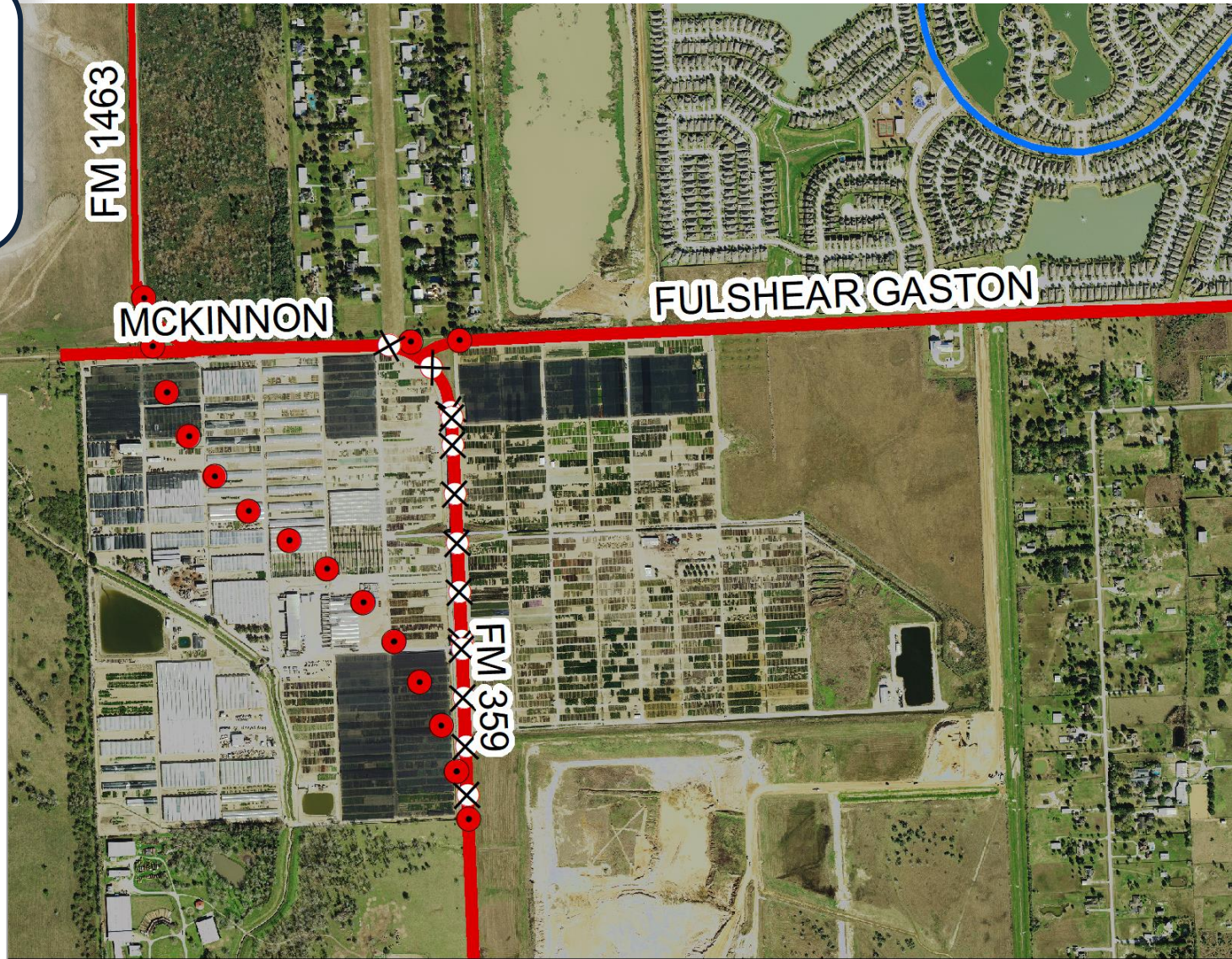
## MTFP AMENDMENT REQUEST

- ADD
- ⊙ REALIGN
- ⊗ DELETE

## RECLASSIFY

- Street Class
- △ ROW Width
- ◇ No. Lanes

- Freeway
- Major Thoroughfare
- Major Collector
- Minor Collector
- Transit Corridor Street



PLANNING &  
DEVELOPMENT  
DEPARTMENT



# Request

- Realign FM 359 and a portion of Fulshear-Gaston

Name	2018 MTFP Classification	Existing Conditions	Proposed MTFP Classification
FM 359	T-4-100	2 lanes, 44 ft street pavement	T-4-100





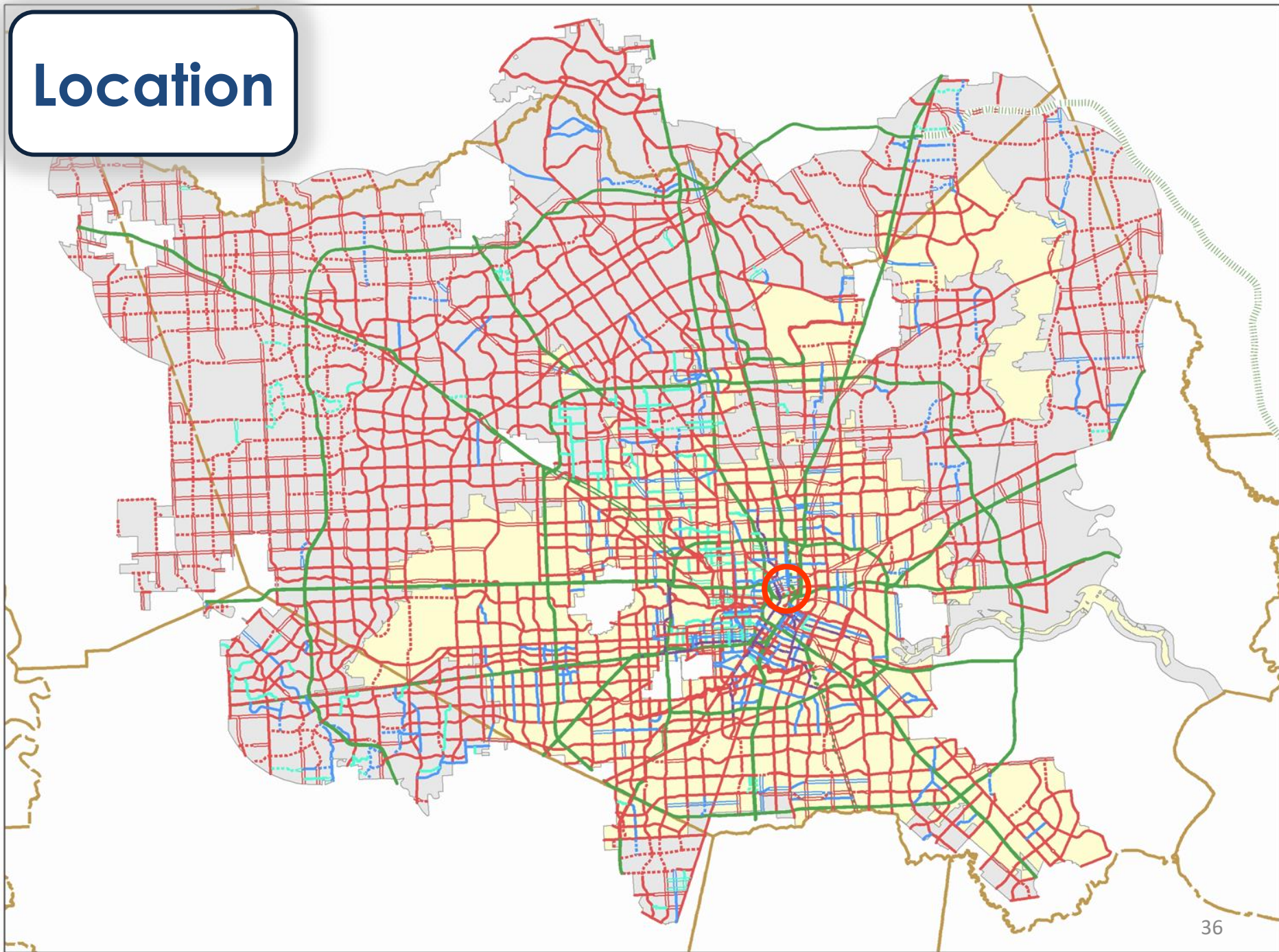
# G-1 Hogan Street

## City of Houston



PLANNING &  
DEVELOPMENT  
DEPARTMENT

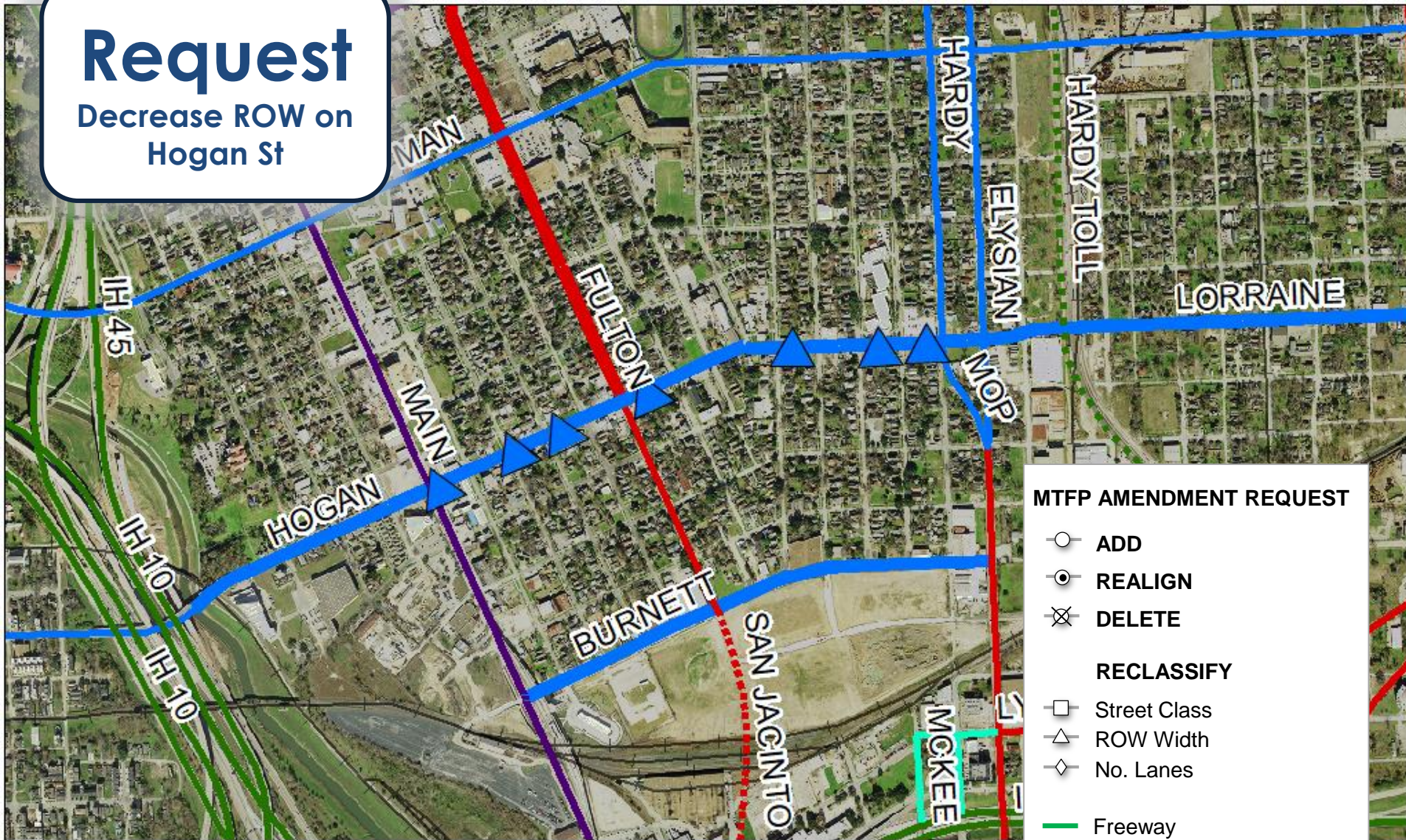
# Location





# Request

Decrease ROW on  
Hogan St



## MTFP AMENDMENT REQUEST

- ADD
- REALIGN
- ✕ DELETE

## RECLASSIFY

- Street Class
- △ ROW Width
- ◇ No. Lanes

- Freeway
- Major Thoroughfare
- Major Collector
- Minor Collector
- Transit Corridor Street



PLANNING &  
DEVELOPMENT  
DEPARTMENT



# Request

- Decrease ROW on Crockett, Hogan and Lorraine to match current extents, in line with programmed CIP project and Walkable Places recommendations

Name	2018 MTFP Classification	Existing Conditions	Proposed MTFP Classification
Hogan	MJ-2-70	2 lanes, 34 ft street pavement	MJ-2-50/65
Lorraine	MJ-2-70	2 lanes, 34 ft street pavement	MJ-2-50/65





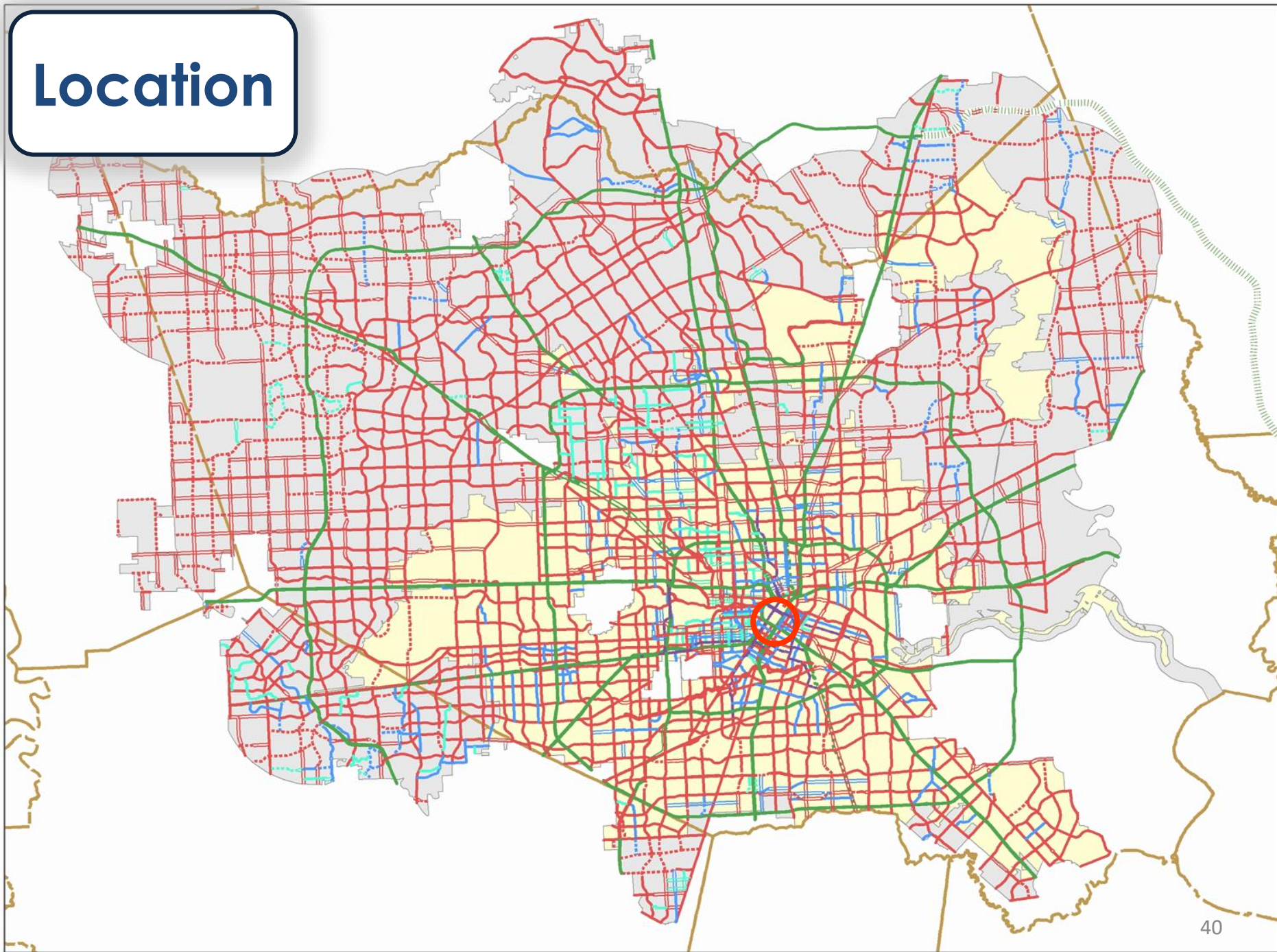
# G-2 Downtown-Midtown

## City of Houston



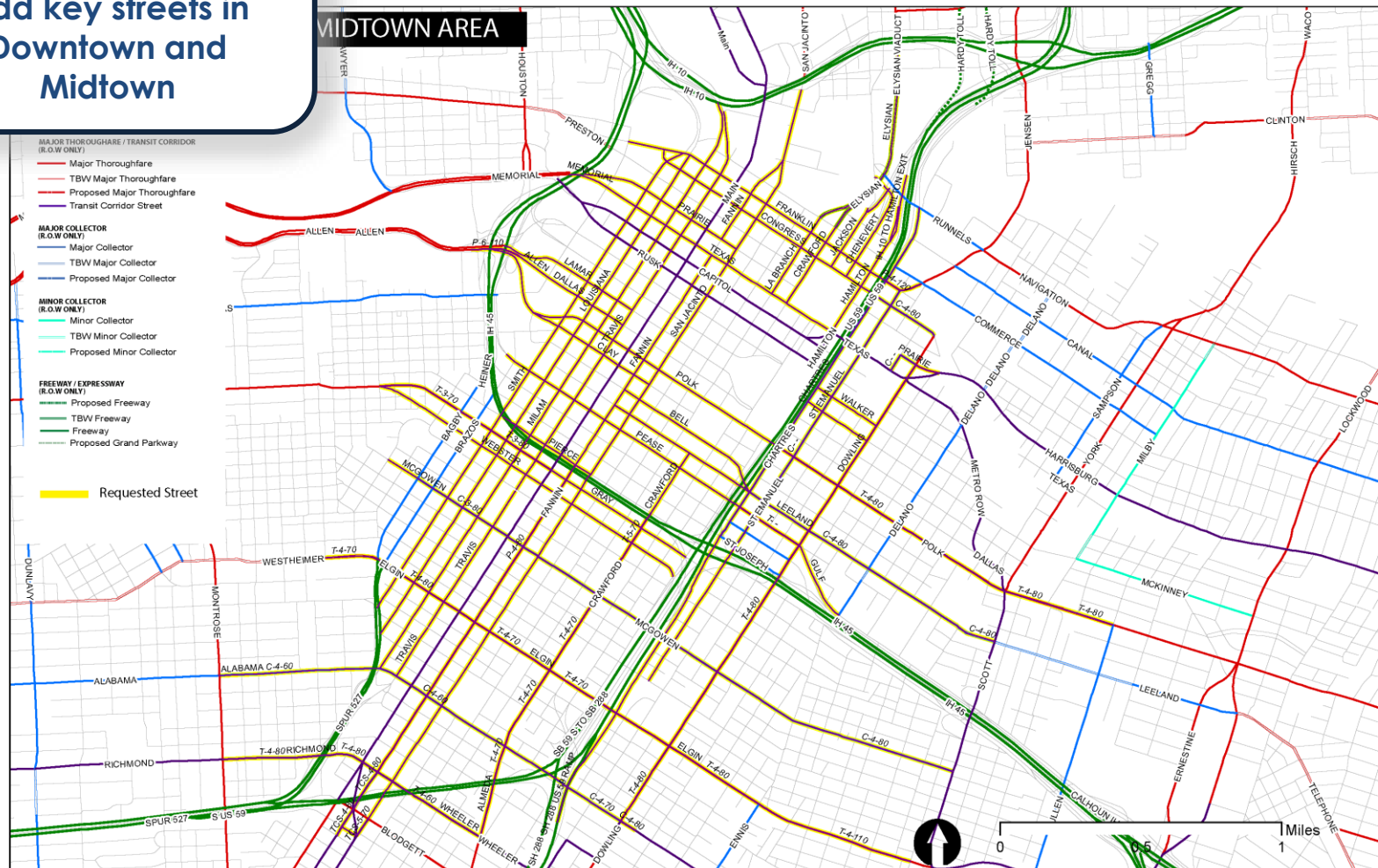
PLANNING &  
DEVELOPMENT  
DEPARTMENT

# Location





## Add key streets in Downtown and Midtown



# PLANNING & DEVELOPMENT DEPARTMENT

- Completed in 2013 through a joint collaborative of Planning, Public Works, and Downtown and Midtown Management Districts

-



# Request

- Add key streets in Downtown and Midtown to the MTFP, in line with Downtown-Midtown Thoroughfare Analysis conducted in 2013



# G-2 Downtown-Midtown: East-West Streets

Name	2018 MTFP Classification	Proposed MTFP Classification
Franklin	N/A	MJ-3/4-80/100
Congress	N/A	MJ-3/4-80
Preston	N/A	MJ-3-80
Prairie	N/A	MJ-3/4-80/100
Texas	N/A	T-2/4/5-80/100
Walker	N/A	MJ-3/4-80
McKinney	N/A	MJ-4-80
Lamar	N/A	MJ-3-80
Dallas	N/A	MJ-3/4-80
Polk	N/A	MJ-4/5-80
Clay	N/A	MJ-3/6-80
Bell	N/A	MJ-3/4/5-80
Leeland	N/A	MJ-5-80
Pease	N/A	T-4/5-80
Jefferson	N/A	MJ-2/4/5-80
St. Joseph	N/A	MJ-4/5-80
Pierce	N/A	T-5-80



## G-2 Downtown-Midtown: North-South Streets

Name	2018 MTFP Classification	Proposed MTFP Classification
Brazos	N/A	MJ-4-80
Bagby	N/A	MJ-4-80
Smith	N/A	T-3/5-80
Louisiana	N/A	T-4/5-80
Milam	N/A	T-4/5-80
Travis	N/A	T-4-80
Fannin	N/A	T-4/5-80
San Jacinto	N/A	T-4/5-80
N. San Jacinto	N/A	T-4-80
McKee	N/A	MN-2-60/70
Hardy	N/A	MN-2-60
Elysian	N/A	T-2/4-40/60
LaBranch	N/A	MJ-3/5-80
Crawford	N/A	MJ-3/4-70/80
Jackson	N/A	MJ-3/4-80
Chenevert	N/A	MJ-3-70/80
Hamilton	N/A	MJ-4/5-80

# H-1. North-South Collector

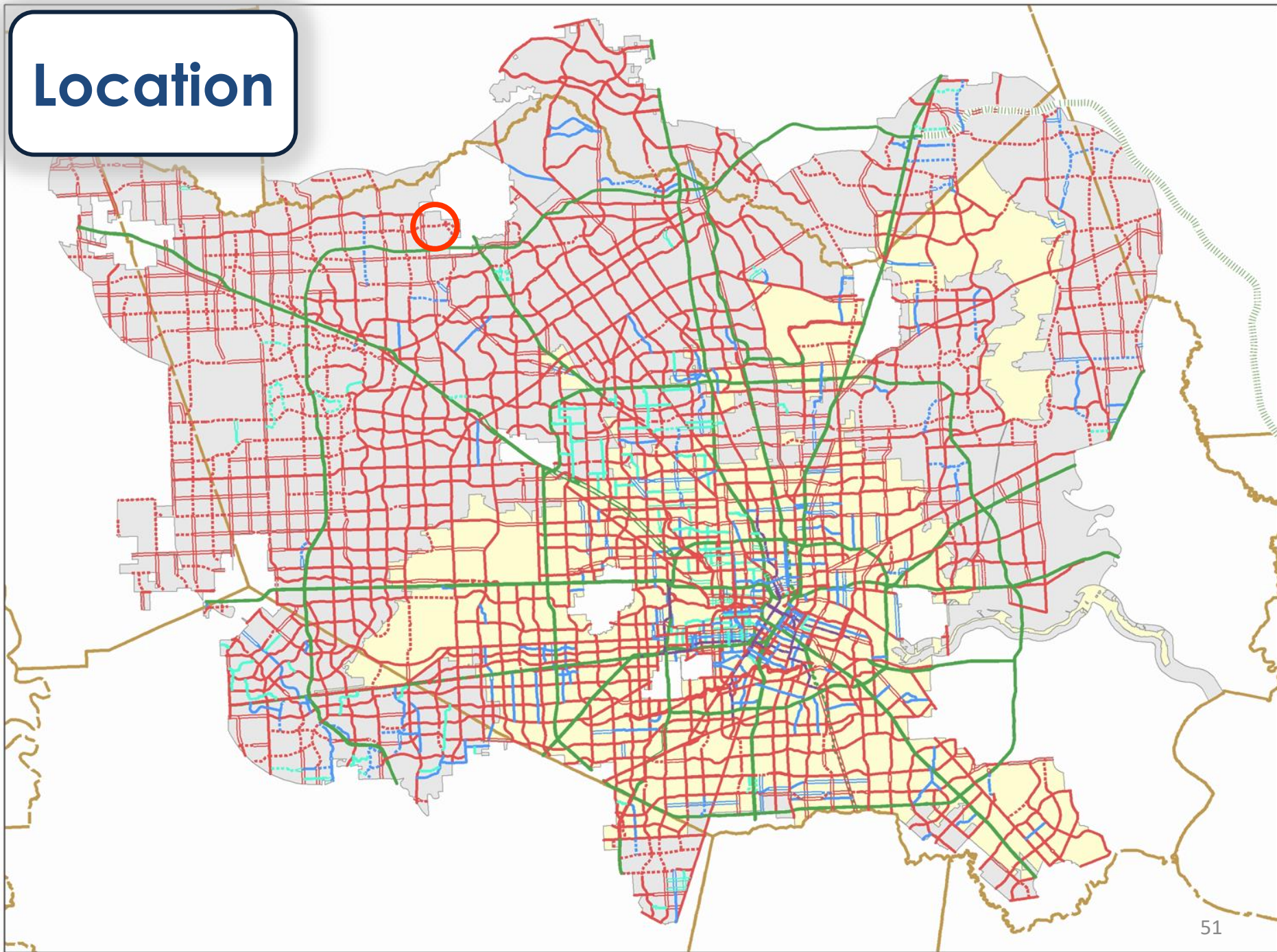
## Harris County



PLANNING &  
DEVELOPMENT  
DEPARTMENT



# Location





# Request

Add Graceview Dr. as  
a Minor Collector

## MTFP AMENDMENT REQUEST

- ADD
- ⊙ REALIGN
- ⊗ DELETE

### RECLASSIFY

- Street Class
- △ ROW Width
- ◇ No. Lanes
- Freeway
- Major Thoroughfare
- Major Collector
- Minor Collector
- Transit Corridor Street



PLANNING &  
DEVELOPMENT  
DEPARTMENT



# Request

- Add north-south road (Graceview Dr.) as a minor collector (MN-2-60) to the MTFP.

Name	2018 MTFP Classification	Existing Conditions	Proposed MTFP Classification
Graceview Dr	N/A	N/A	MN-2-60



# H-2. Spring Stadium Loop

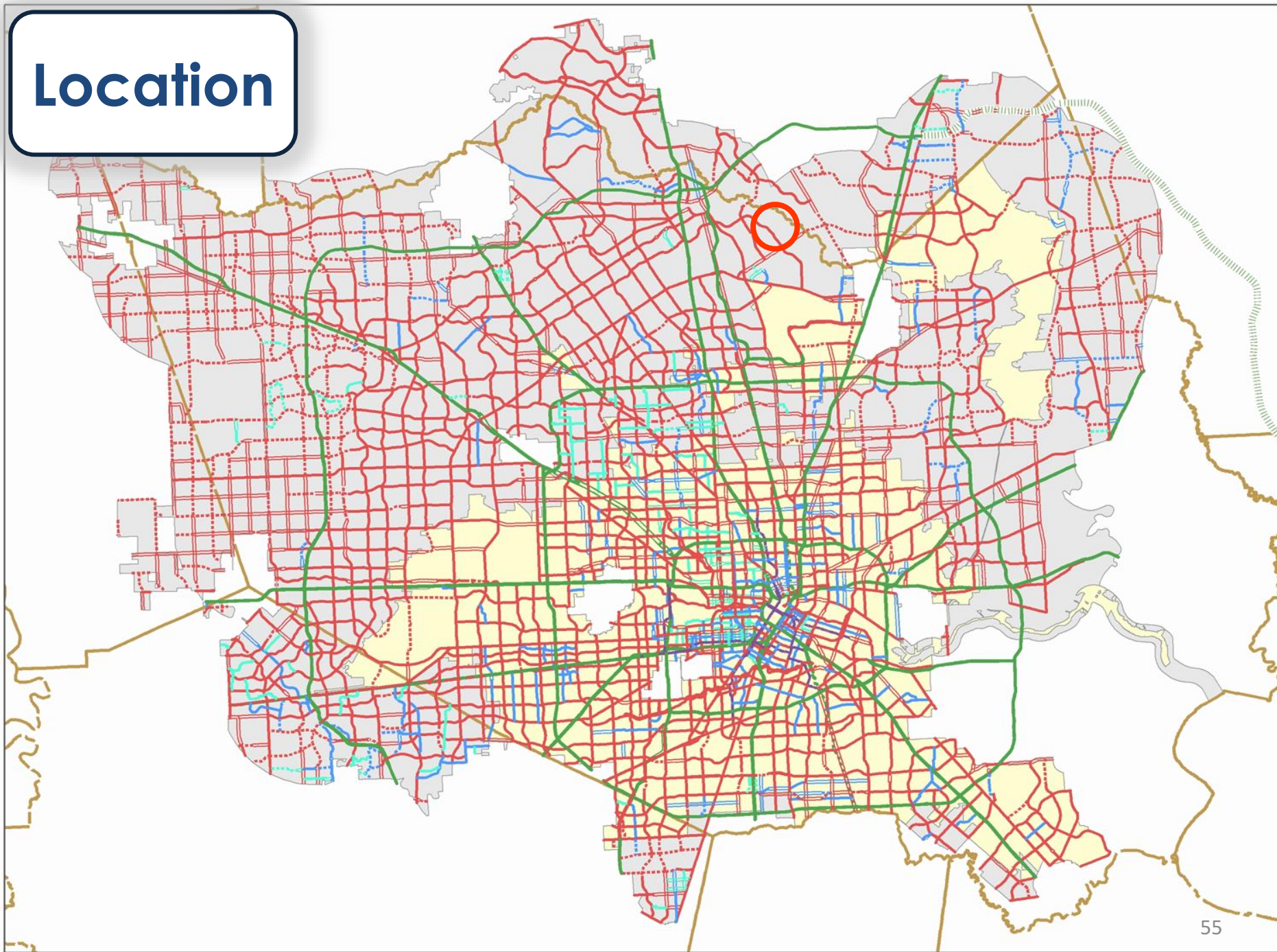
## Harris County



PLANNING &  
DEVELOPMENT  
DEPARTMENT



# Location





# Request

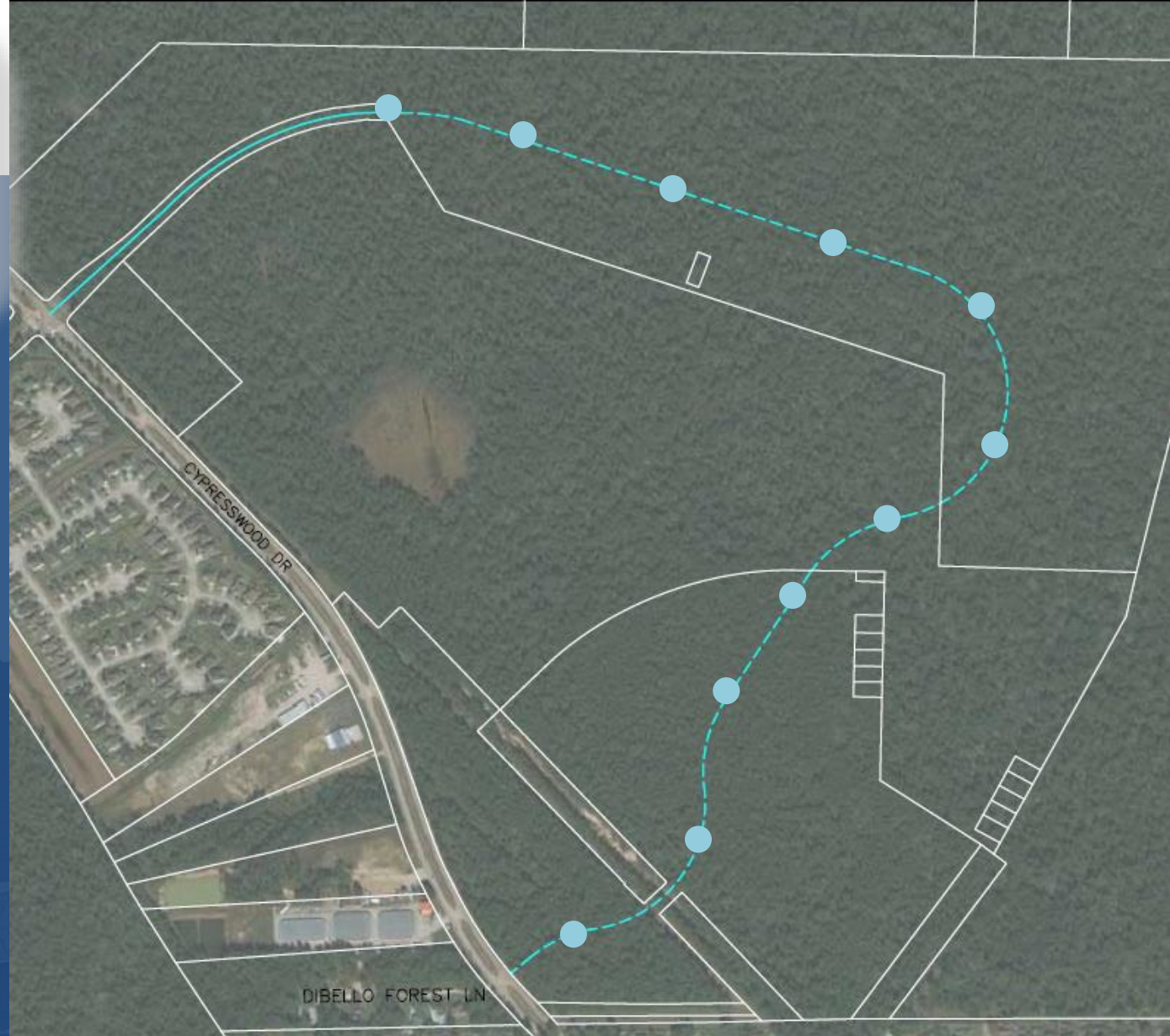
Add Spring Stadium  
Loop Road as  
a Minor Collector

## MTFP AMENDMENT REQUEST

- ADD
- ◉ REALIGN
- ✕ DELETE

### RECLASSIFY

- Street Class
- △ ROW Width
- ◇ No. Lanes
- Freeway
- Major Thoroughfare
- Major Collector
- Minor Collector
- Transit Corridor Street



PLANNING &  
DEVELOPMENT  
DEPARTMENT



# Request

- Add Spring Stadium Loop Rd. as a minor collector (MN-2-60) to the MTFP.

Name	2018 MTFP Classification	Existing Conditions	Proposed MTFP Classification
Spring Stadium Loop Road	N/A	N/A	MN-2-60



# H-3. East-West Minor Collector

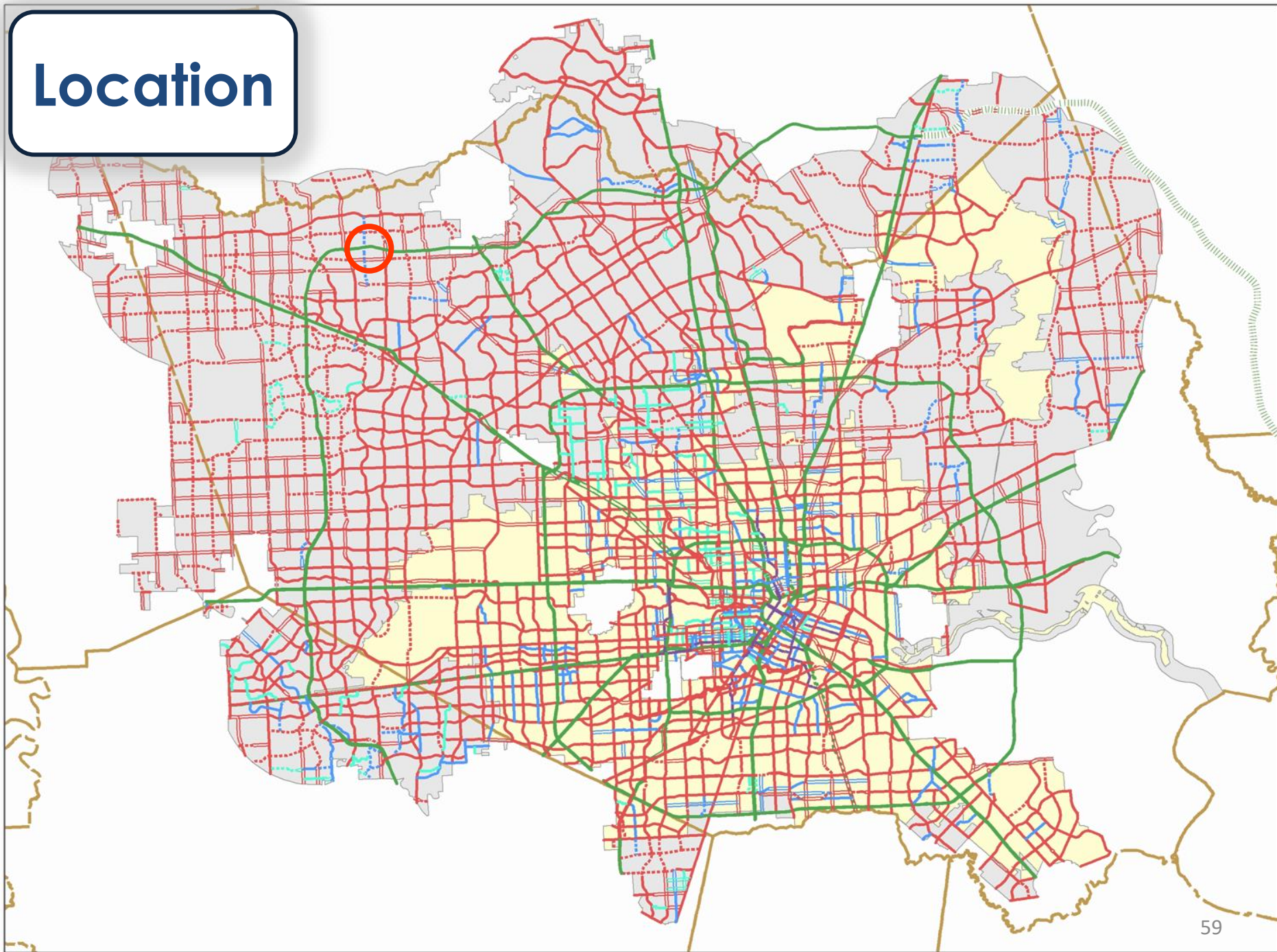
## Harris County



PLANNING &  
DEVELOPMENT  
DEPARTMENT



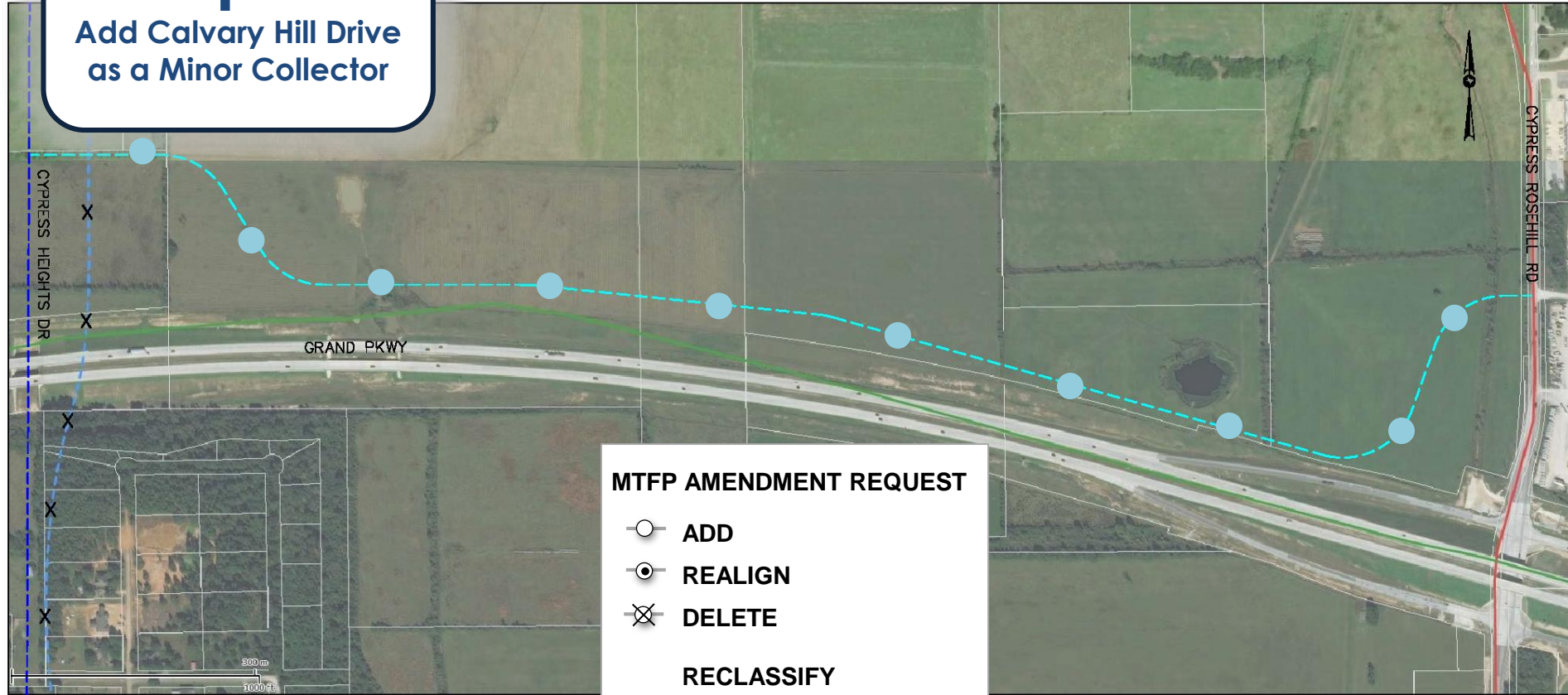
# Location





# Request

Add Calvary Hill Drive  
as a Minor Collector



**PLANNING &  
DEVELOPMENT  
DEPARTMENT**



# Request

- Add Calvary Hill Drive as a minor collector (MN-2-60) to the MTFP.

Name	2018 MTFP Classification	Existing Conditions	Proposed MTFP Classification
Calvary Hill Drive	N/A	N/A	MN-2-(60-80)



# IV. Next Steps

- **Property Owner Notification**  
**Next two weeks**
- **Public Open House**  
**Wednesday, June 12**
- **PC Public Hearing**  
**Thursday, August 1**
- **PC Action Meeting**  
**Thursday, August 29**

